



AIRCAT[®]

PNEUMATIC TOOLS[®]

PRODUCT CATALOGUE 2023

**WHEN YOU'VE GOT REAL WORK TO DO...
GRAB HOLD OF AN AIRCAT!**

AIRCAT[®]
PNEUMATIC TOOLS[®]

NITROCAT[®]
Xtreme
POWER

VIBROTHERM
by AIRCAT. DRIVE[®]

WWW.AIRCAT-TOOLS.COM

The AIRCAT® line represents the most significant advances in the performance of pneumatic power tools in nearly 30 years. In fact, AIRCAT® has a substantially reduced level of noise while retaining more power and torque. But that's not all: The patented ergonomically engineered handle design to relieve stress and fatigue on the operator's hands, wrists and arms. Also feature a high quality level of service with increased cutting performance, while significantly reducing noise. More power Half the noise.

VIBROTHERM DRIVE® impact wrenches combine our patented adjustable drive coupling with state-of-the-art cosmetic styling. These revolutionary impact wrenches offer longer working life, lower vibration and shorter length for improved comfort, as well as greater flexibility in your operations.

Our new AIRCAT® impact wrenches deliver an unmatched 2,100 ft-lb torque with weights between 5.87 Kg to 11.78 Kg. The new sander line delivers low noise and vibration levels, low air consumption and unmatched operating comfort at prices that reflect the usual AIRCAT® great



TABLE OF CONTENTS

| MODEL NO. | DESCRIPTION | PAGE NO. |
|-----------------|---------------------------------------------------------|----------|
| IMPACT WRENCHES | | |
| AC1056-XL | AIRCAT 1/2" Composite Impact Wrench | 9 |
| AC1057-TH | AIRCAT 1/2" Composite Impact Wrench | 9 |
| AC1058-VXL | AIRCAT 1/2" Compact Impact Wrench | 9 |
| AC1059-VXL | AIRCAT 3/8" Compact Impact Wrench | 9 |
| AC1125 | AIRCAT 1/2" Impact Wrench NEW | 12 |
| AC1150 | AIRCAT 1/2" Impact Wrench | 11 |
| AC1178-VXL | AIRCAT 1/2" Composite Impact Wrench | 11 |
| AC1280-IND | AIRCAT 1/2" Impact Wrench | 10 |
| AC1431 | AIRCAT 1/2" Impact Wrench | 10 |
| AC1450 | AIRCAT 1/2" Impact Wrench | 10 |
| AC1450-2 | AIRCAT 1/2" Impact Wrench | 10 |
| AC1600-TH-A | AIRCAT 3/4" Super Duty" Impact Wrench | 13 |
| AC1600-TH-A1 | AIRCAT 1" Super Duty" Pistol Impact Wrench | 17 |
| AC1777 | AIRCAT 3/4" Super Duty" Impact Wrench | 13 |
| AC1778-VXL | AIRCAT 3/4" Super Duty" Impact Wrench | 13 |
| AC1870-P | AIRCAT 1" Pistol Impact Wrench | 17 |
| AC1890-P | AIRCAT 1" Pistol Impact Wrench | 17 |
| AC1900-A | AIRCAT 1" x 8" Extended "Super Duty" Impact Wrench | 14 |
| AC1900A-1 | AIRCAT 1" Super Duty" Impact Wrench | 14 |
| AC1991 | AIRCAT 1" Straight Impact Wrench With 6" Extended Anvil | 14 |
| AC1991-1 | AIRCAT 1" Straight Impact Wrench | 14 |
| AC1992 | AIRCAT 1" Impact Tool with 8" Anvil NEW | 14 |
| AC1993-1-VXL | AIRCAT 1" x 7" Straight Impact Wrench | 16 |
| AC1993-VXL | AIRCAT 1" Straight extended Impact Wrench | 16 |
| AC1994 | AIRCAT 1" Impact Tool with 8" Anvil NEW | 15 |

| | | |
|------------|------------------------------------------------|----|
| RATCHETS | | |
| AC800 | AIRCAT 1/4" Mini Composite Single Pawl Ratchet | 20 |
| AC801 | AIRCAT 3/8" Mini Composite Single Pawl Ratchet | 20 |
| AC802 | AIRCAT 3/8" Composite Twin Pawl Ratchet | 20 |
| AC802-5 | AIRCAT 1/2" Composite Twin Pawl Ratchet | 20 |
| AC804 | AIRCAT 1/4" Mini Ratchet | 21 |
| AC805-HT | AIRCAT 3/8" Composite High Torque Ratchet | 21 |
| AC805-HT-5 | AIRCAT 1/2" Composite High Torque Ratchet | 21 |
| AC806 | AIRCAT 3/8" High Performance Ratchet | 21 |
| AC807 | AIRCAT 3/8" Mini Ratchet NEW | 22 |
| AC807-25 | AIRCAT 1/4" Mini Ratchet NEW | 22 |
| AC808-15 | AIRCAT 15.3" Long Reach 3/8" Composite Ratchet | 22 |
| AC808-22 | AIRCAT 22.5" Long Reach 3/8" Composite Ratchet | 22 |
| AC809 | AIRCAT 3/8" Flat Head Ratchet NEW | 22 |
| AC809-5 | AIRCAT 1/2" Flat Head Ratchet NEW | 23 |
| AC810 | AIRCAT 3/8" Mini Ratchet | 23 |
| AC811 | AIRCAT 1/4" 30° Flex Head Ratchet NEW | 23 |

| | | |
|--------------------------|-----------------------------------------------------------|----|
| GRINDERS & CUT-OFF TOOLS | | |
| AC6200 | AIRCAT 6mm Straight Composite Mini Die Grinder | 26 |
| AC6201 | AIRCAT 6mm Straight Composite Die Grinder | 26 |
| AC6210 | AIRCAT 6mm Extended Straight Composite Die Grinder | 26 |
| AC6255 | AIRCAT 6mm Angled Composite Die Grinder | 26 |
| AC6260 | AIRCAT 6mm Straight 1.0 HP Composite Die Grinder | 27 |
| AC6265 | AIRCAT 6mm Angled 1.0 HP Composite Die Grinder | 27 |
| AC6270 | AIRCAT 6mm Extended Straight 1.0 HP Composite Die Grinder | 27 |
| AC6275-A | AIRCAT 4" Extended Cut-Off Tool | 27 |

| MODEL NO. | DESCRIPTION | PAGE NO. |
|--------------------------|---------------------------------------------------------------|----------|
| GRINDERS & CUT-OFF TOOLS | | |
| AC6280 | AIRCAT 6mm Angled 0.75 HP Spindle Lock Composite Die Grinder | 28 |
| AC6285 | AIRCAT 6mm Straight 1.0 HP Spindle Lock Composite Die Grinder | 28 |
| AC6290 | AIRCAT 6mm Straight 0.75 HP Reversible Composite Die Grinder | 28 |
| AC6295 | AIRCAT 6mm - 0.6hp - 115° Angled Die Grinder NEW | 29 |
| AC6340 | AIRCAT 4-1/2" Angled Composite Grinder | 29 |
| AC6520 | AIRCAT 3" Composite Reversible Cut-Off Tool | 29 |
| AC6530 | AIRCAT 3" Flexi-Head Cut Off Tool | 30 |
| AC6560 | AIRCAT 3" Cut Off Tool | 30 |

| | | |
|--------|--------------------------------------------------------------------|----|
| DRILLS | | |
| AC4337 | AIRCAT 3/8" Capacity Keyed Composite Angled Drill | 32 |
| AC4338 | AIRCAT 3/8" Capacity Keyless Composite Pistol Grip Drill - Keyless | 32 |
| AC4450 | AIRCAT 1/2" Capacity Keyed Composite Drill - Side Assist Handle | 33 |
| AC4451 | AIRCAT 1/2" Capacity Keyed Pistol Grip Vibration Reduced Drill | 33 |

| | | |
|------------|------------------------------------------------------|----|
| HAMMERS | | |
| AC5100-A-T | AIRCAT 0.401" Shank Composite Hammer | 37 |
| AC5100-A | AIRCAT 0.401" Shank Composite Hammer KIT | 37 |
| AC5200-A-T | AIRCAT 0.401" Shank Long Stroke Composite Hammer | 38 |
| AC5200-A | AIRCAT 0.401" Shank Long Stroke Composite Hammer Kit | 38 |
| AC5250-A | AIRCAT 0.401" Super Duty Air Hammer NEW | 39 |
| AC5300-A-T | AIRCAT 0.498" Shank Super Duty Composite Hammer Kit | 40 |
| AC5300-A | AIRCAT 0.498" Shank Super Duty Composite Hammer KIT | 40 |

| | | |
|------------------------------------|-----------------------------------------|----|
| AIR SAW, NIBBLER AND NEEDLE SCALER | | |
| AC6330 | AIRCAT Nibbler | 43 |
| AC6350 | AIRCAT Low Vibration Air Saw | 43 |
| AC6355 | AIRCAT Reciprocating Air Saw NEW | 43 |
| AC6390 | AIRCAT Compact Needle Scaler NEW | 43 |

| | | |
|--------------|-----------------------------------------------|----|
| TIRE BUFFERS | | |
| AC6400 | AIRCAT Composite High Speed Tire Buffer/Drill | 46 |
| AC6402 | AIRCAT Composite Tire Buffer | 46 |
| AC6403 | AIRCAT Composite Tire Buffer | 46 |

| | | |
|---------------------|------------------------------------------------------------|-------|
| SANDERS & POLISHERS | | |
| AC6310 | AIRCAT 6" Dual Action Sander | 50 |
| AC6315 | AIRCAT 3" Orbital Sander - Pistol Version NEW | 50 |
| AC6315K | AIRCAT 3" Orbital Sander Kit NEW | 50 |
| AC6320 | AIRCAT Spot Sander | 51 |
| AC6320-K | AIRCAT Spot Sander and Polisher Kit | 51 |
| AC6370 | AIRCAT Low Weight Composite Vertical Polisher | 51 |
| AC6700-1-332 | AIRCAT 1" Composite 2.5mm Orbital Palm Sander Non Vac | 47-48 |
| AC6700-3-332 | AIRCAT 3" Composite 2.5mm Orbital Palm Sander Non Vac | 47-48 |
| AC6700-3-332CV | AIRCAT 3" Composite 2.5mm Orbital Palm Sander Central Vac | 47-48 |
| AC6700-5-336 | AIRCAT 5" Composite 5mm Orbital Palm Sander Non Vac | 47-48 |
| AC6700-5-336CV | AIRCAT 5" Composite 5mm Orbital Palm Sander Central Vac | 47-48 |
| AC6700-6-332 | AIRCAT 6" Composite 2.5 mm Orbital Palm Sander Non Vac | 47-48 |
| AC6700-6-332CV | AIRCAT 6" Composite 2.5 mm Orbital Palm Sander Central Vac | 47-48 |
| AC6700-6-332SV | AIRCAT 6" Composite 2.5mm Orbital Palm Sander Hose & Bag | 47-48 |
| AC6700-6-336 | AIRCAT 6" Composite 5mm Orbital Palm Sander Non Vac | 47-48 |
| AC6700-6-336CV | AIRCAT 6" Composite 5mm Orbital Palm Sander Central Vac | 47-48 |
| AC6700-6-336SV | AIRCAT 6" Composite 5mm Orbital Palm Sander Hose & Bag | 47-48 |
| AC6700-6GCV | AIRCAT 6" Geared 5mm Orbital Sander Central Vac | 47-48 |
| AC6700-8-GCV | AIRCAT 8" Geared 5mm Orbital Sander Central Vac | 47-48 |
| AC6700-JBS-332 | AIRCAT Jitterbug Sander" 200 x 70mm NEW | 47-48 |

NEW TOOLS AIRCAT 2023

IMPACT WRENCHES

AC1125

1/2" | SUPER-DUTY IMPACT WRENCH



Provides 1355Nm working torque and 1694Nm of loosening torque;

Sets industry standard for weight, size & class;

MORE INFORMATION
ON PAGE 12

IMPACT WRENCHES

AC1992

1" X 8" | EX IMPACT WRENCH



Provides 2440 Nm working torque and 2700 Nm of loosening torque;

Low maintenance pin-less hammer provides ultimate reliability and added hitting power;

MORE INFORMATION
ON PAGE 15

IMPACT WRENCHES

AC1994

1" X 8" | EX "SUPER DUTY" IMPACT WRENCH



Provides 3120 Nm working torque and 3400 Nm of loosening torque;

Low maintenance pin-less hammer provides ultimate reliability and added hitting power;

MORE INFORMATION
ON PAGE 15

RATCHETS

AC807

3/8" | "MINI" PALM RATCHET



50 Nm Maximum torque;

300 RPM provides fast run-down;

MORE INFORMATION
ON PAGE 22

RATCHETS

AC807-25

1/4" | "MINI" PALM RATCHET



47 Nm Maximum torque;

300 RPM provides fast run-down;

MORE INFORMATION
ON PAGE 22

RATCHETS

AC809

3/8" FLAT HEAD RATCHET



81 Nm Maximum torque;

350 RPM provides fast run-down;

MORE INFORMATION
ON PAGE 22

NEW TOOLS AIRCAT 2023

RATCHETS

AC809-5

1/2" FLAT HEAD RATCHET



81 Nm
Maximum torque;
350 RPM provides
fast run-down;

MORE INFORMATION
ON PAGE 23

HAMMERS

AC5250A-T

0.40T" SUPER DUTY AIR HAMMER



2,500 BPM;
3" Piston stroke;
Includes Quick change
chisel retainer;

MORE INFORMATION
ON PAGE 39

SANDERS

AC6315

3" ORBITAL SANDER



Low weight
composite housing;
Top mounted one-hand
Forward/Reverse switch;
Feather speed control trigger;

MORE INFORMATION
ON PAGE 50

RATCHETS

AC811

1/4" 30° FLEX HEAD RATCHET



48 Nm Maximum torque;
240 RPM Free Speed;
3 Position Flex Head design;

MORE INFORMATION
ON PAGE 23

GRINDERS

AC6295

115° ANGLE DIE GRINDER



0.6 HP Motor;
18,000 RPM;
Spindle lock feature
for easy accessory change;

MORE INFORMATION
ON PAGE 39

NEW TOOLS AIRCAT 2023

NEEDLE SCALER

AC6390

COMPACT NEEDLE SCALER



4,800 BPM;

1-1/4" Stroke;

Low weight compact design;

MORE INFORMATION
ON PAGE 43

SANDERS

AC6700-JBS-332

JITTERBUG SANDER



MORE INFORMATION
ON PAGE 47-48

SANDERS

AC6315K

3" ORBITAL SANDER KIT



Low weight
composite housing;

Top mounted one-hand
Forward/Reverse switch;

Feather speed control trigger;

MORE INFORMATION
ON PAGE 50

AIR SAW

AC6355

RECIPROCATING AIR SAW



5,000 SPM;

Dual-Speed design for control;

Quick change blade design retainer for
quick and easy blade changes;

MORE INFORMATION
ON PAGE 43

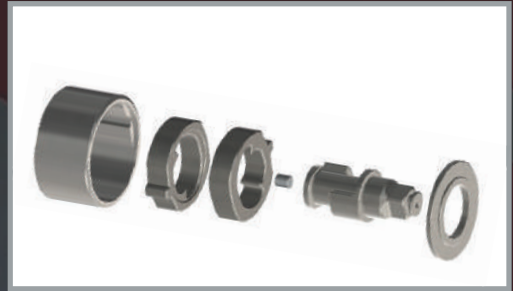
IMPACT WRENCHES

The AIRCAT impact wrench offers the customer a durable, high torque-producing tool that offers 85% more torque than industry standards and a significant noise reduction. These wrenches have been created with the utmost care to ensure longevity and superior performance..

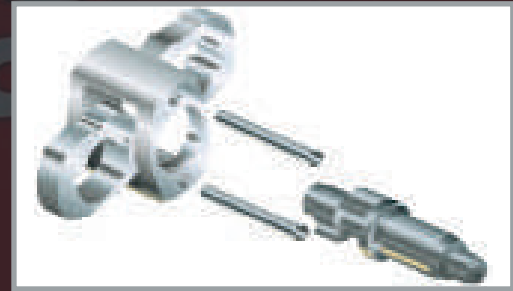


AIRCAT® IMPACT WRENCH MECHANISMS AND PERFORMANCE CHARACTERISTICS

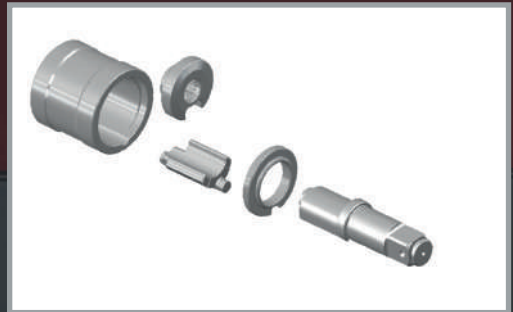
VIBROTHERM DRIVE® is a new AIRCAT® patented mechanism that provides faster blow frequency, high torque, low vibration and a longer working life than other conventional impact wrench mechanisms. In addition it reduces overall tool length. The cage is driven by the motor that drives the two hammers to generate two blows for each revolution, the elimination of hammer pins and the addition of the front hammer cage plate that retains the grease within the mechanism, reduces wear within the mechanism increasing working life



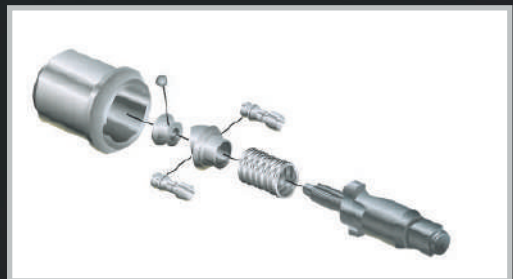
The TWIN HAMMER is the most widely used impact wrench mechanism that provides fast blow frequency and high torque. The mechanism is most widely used for AIRCAT® 3/8", 1/2" and 3/4" impact wrenches. The cage is driven by the motor that drives the twin hammers that rock on hammer pins that pass through the hammer cage to generate two blows for each revolution.



The PIN-LESS HAMMER is used in AIRCAT® 1" impact wrenches. The PIN-LESS mechanism has a more positive drive and uses less moving parts, this design increases reliability for heavy duty applications. The large single hammer provides hard hitting power to achieve rapid high torque. The cage is driven by the motor that drives the large single hammer to generate one hard hitting blow for each revolution.



The TWIN CLUTCH is featured in NITROCAT® 1/2" impact wrenches and is specifically designed to provide smooth and powerful operation, and to create high initial torque. This mechanism outperforms other mechanism in high torque engine service and repair work, and particularly for removal of stubborn crank shaft bolts. When the hammer rotates past the anvil a ball pushes the pins forward engaging them with the anvil, the pins are then pushed backwards by the spring, this mechanism has very fast acceleration that creates the high initial torque



The JUMBO HAMMER is used in AIRCAT® and NITROCAT® compact impact wrenches. The JUMBO hammer enables AIRCAT® to provide high torque and high reliability in its smallest impact wrenches. The cage is driven by the motor that drives the single JUMBO hammer that rocks on hammer pins that pass through the hammer cage to generate one hard hitting blow for each revolution.



The TWO JAW CLUTCH is featured exclusively in the AIRCAT®1890-P 1" Pistol Grip Impact Wrench. The TWO JAW clutch provides unparalleled torque output and longer life than any other mechanism. The cage is driven by the motor and the jaws on the cage directly drive the anvil. This action eliminates the customary hammering, increasing torque and reducing wear. The internal spring then disengages the jaws to turn to the next drive cycle. The mechanism is ideal for heavy duty off road vehicle work and steel erection.



AC1057-TH | 1/2" | STUBBY IMPACT WRENCH



- PROVIDES 680 NM OF MAXIMUM TORQUE;
- ONLY 97.79 MM OVERALL LENGTH;
- LOW WEIGHT ALUMINUM ALLOY HOUSING;
- RELIABLE JUMBO HAMMER MECHANISM DELIVERS MAXIMUM POWER, WHILE INCREASING RELIABILITY;
- PATENTED "SILENCING TECHNOLOGY" REDUCES THE NOISE LEVEL TO 89 DBA;
- TRIGGER MOUNTED COMBINED REVERSE AND POWER MANAGEMENT SWITCH PROVIDES ULTIMATE CONTROL AND ONE-HAND OPERATION;

AC1056-XL | 1/2" | COMPOSITE COMPACT IMPACT



- PROVIDES 750 NM MAXIMUM TORQUE;
- LOW WEIGHT COMPOSITE HOUSING REDUCES WEIGHT TO 1.13 KG;
- RELIABLE JUMBO HAMMER MECHANISM DELIVERS MAXIMUM POWER, WHILE INCREASING RELIABILITY;
- PATENTED "SILENCING TECHNOLOGY" REDUCES THE NOISE LEVEL TO 85 DBA;
- PATENTED GRIP HAS BEEN ERGONOMICALLY DESIGNED TO PERFECTLY FIT THE HAND, PROVIDING UNMATCHED COMFORT FOR THE USER;
- NEW PATENTED TRIGGER MOUNTED COMBINED REVERSE AND POWER MANAGEMENT SWITCH PROVIDES ULTIMATE CONTROL AND ONE-HAND OPERATION;

AC1058-VXL & AC1059-VXL | 1/2" & 3/8" | COMPACT IMPACT WRENCH



- PROVIDES 750 NM MAXIMUM TORQUE;
- VIBROTHERM DRIVE® IMPACT WRENCHES INCORPORATE THE COMPLETELY NEW AIRCAT DESIGN IMPACT WRENCH MECHANISM (PATENT PENDING);
- THE NEW MECHANISM REDUCES VIBRATION LEVELS BY BETWEEN 30%-40% AND INCREASED THE LIFE OF THE MECHANISM BY 50%;
- THE LATEST PATENTED AIRCAT MUFFLER SYSTEM PRODUCES THE CHARACTERISTIC AIRCAT UNMATCHED LOW NOISE LEVELS;
- THE PATENTED GRIP DESIGN PROVIDE THE CUSTOMARY AIRCAT OPERATOR COMFORT;
- INVESTMENT INTO TOOLING AND MATERIALS AND A TRIPLE INJECTION MOLDING PROCESSES ENABLES AIRCAT TO PRODUCE COSMETIC DESIGNS THAT ARE UNMATCHED IN THE INDUSTRY;
- "THREE YEAR WARRANTY";

SPECIFICATIONS

| Model No. | Max. Torque (ft-lb) @90 psi | Max. Torque (Nm) | Square Drive (in.) | Impacts Per Minute | Free Speed (RPM) | Bolt Capacity (mm) | Weight (kg) | Length (mm) | Vibration Levels M/Sec2 | Air Cons. (CFM) | Rec. Hose Size (in.) |
|------------|-----------------------------|------------------|--------------------|--------------------|------------------|--------------------|-------------|-------------|-------------------------|-----------------|----------------------|
| AC1056-XL | 550 | 750 | 1/2 | 1650 | 9,000 | 15 | 1.13 | 107.95 | 9.9 | 8 | 3/8 |
| AC1057-TH | 500 | 680 | 1/2 | 1600 | 9,000 | 13 | 1.27 | 97.79 | 12.5 | 6.0 | 3/8 |
| AC1058-VXL | 550 | 750 | 1/2 | 1700 | 9,000 | 15 | 1.27 | 111.76 | 4.3 | 8 | 3/8 |
| AC1059-VXL | 550 | 750 | 3/8 | 1700 | 9,000 | 15 | 1.27 | 111.76 | 4.3 | 8 | 3/8 |

AC1431 | 1/2" | IMPACT WRENCH



- PROVIDES 1080 NM WORKING TORQUE AND 1355 NM OF LOOSENING TORQUE;
- HARD HITTING TWIN HAMMER MECHANISM DELIVERS MAXIMUM POWER;
- GRIP IS ERGONOMICALLY DESIGNED TO PERFECTLY FIT THE HAND, PROVIDING UNMATCHED COMFORT FOR THE USER;
- CROSS BOLT FORWARD/REVERSE AND POWER MANAGEMENT CONTROL;
- TRIPLE HEAT TREATED NI-CR-MO ALLOY STEEL HAMMER MECHANISM PARTS AND ANVIL PROVIDE ULTIMATE RELIABILITY;

AC1450 & AC1450-2 | 1/2" | IMPACT WRENCH



- PROVIDES 1090 NM MAX. TORQUE;
- REFINED DESIGN TWIN HAMMER INCREASES BLOW; FREQUENCY AND BLOW EFFICIENCY;
- VERY FAST TORQUE DEVELOPMENT;
- 9,000 RPM FREE SPEED PROVIDES FAST RUN-DOWN;
- ERGONOMICALLY DESIGNED GRIP PROVIDES MAXIMUM OPERATING COMFORT;
- SIX POSITION POWER MANAGEMENT SWITCH IN BACK CAP PROVIDES ULTIMATE CONTROL;
- GREAT BALANCE AND HANDLING COMFORT;
- BRUSHED ALUMINUM HOUSING FINISH;

AC1280-IND | 1/2" | COMPOSITE IMPACT WRENCH



- REFINED DESIGN TWIN HAMMER AND BIASED MOTORS PROVIDE HIGH TORQUE;
- LOW WEIGHT COMPOSITE HOUSINGS;
- ERGONOMIC TRIGGER DESIGN WITH FEATHER CONTROL;
- PUSH BUTTON FORWARD / REVERSE FOR INSTANT CHANGE IN DIRECTION;
- FOUR POSITION POWER MANAGEMENT / SWITCH CONVENIENTLY LOCATED IN THE BACK CAP;
- HAMMER CASES ON AIRCAT INDUSTRIAL MODELS ARE NOT TITANIUM FINISH;
- BUILT-IN SIDE IMPACT BUFFERS;
- OVER-MOLDED ERGONOMIC GRIP;

SPECIFICATIONS

| Model No. | Max. Torque (ft-lb) @90 psi | Max. Torque (Nm) | Square Drive (in.) | Impacts Per Minute | Free Speed (RPM) | Bolt Capacity (mm) | Weight (kg) | Length (mm) | Vibration Levels M/Sec2 | Air Cons. (CFM) | Rec. Hose Size (in.) |
|------------|-----------------------------|------------------|--------------------|--------------------|------------------|--------------------|-------------|-------------|-------------------------|-----------------|----------------------|
| AC1431 | 800 | 1080 | 1/2 | 1600 | 9,000 | 13 | 2.5 | 182.8 | 12.5 | 8 | 3/8 |
| AC1450 | 800 | 1090 | 1/2 | 1200 | 9,000 | 15 | 2.20 | 177.80 | 13.5 | 8 | 3/8 |
| AC1450-2 | 800 | 1090 | 1/2 x 2 | 1200 | 9,000 | 15 | 2.32 | 228.60 | 14.0 | 8 | 3/8 |
| AC1280-IND | 805 | 1085 | 1/2 | 1600 | 8,000 | 15 | 2.09 | 168.21 | 8.1 | 8 | 3/8 |

AC1150 | 1/2" | IMPACT WRENCH



- PROVIDES 1700 NM LOOSENING TORQUE;
- MOST POWERFUL 1/2" IMPACT IN IT'S CLASS;
- HARD HITTING TWIN HAMMER MECHANISM;
- DURABLE COMPOSITE HOUSING;
- PATENTED ERGONOMICALLY DESIGNED HANDLE;
- PATENTED QUIET TUNED EXHAUST (86 DECIBELS);
- PATENTED EASY OPERATION FLIP LEVER FORWARD AND REVERSE;

AC1178 | 1/2" | IMPACT WRENCH



- PROVIDES 1770 NM LOOSENING TORQUE;
- VIBROTHERM DRIVE® IMPACT WRENCHES INCORPORATE THE COMPLETELY NEW AIRCAT DESIGN IMPACT WRENCH MECHANISM (PATENT PENDING);
- THE NEW MECHANISM REDUCES VIBRATION LEVELS BY BETWEEN 30%-40% AND INCREASED THE LIFE OF THE MECHANISM BY 50%;
- THE LATEST PATENTED AIRCAT MUFFLER SYSTEM PRODUCES THE CHARACTERISTIC AIRCAT UNMATCHED LOW NOISE LEVELS;
- IMPROVED DESIGN ERGONOMIC GRIP FOR MAXIMUM OPERATING COMFORT;
- VERY FAST TORQUE DEVELOPMENT;
- COMBINED SIX POSITION POWER MANAGEMENT AND REVERSE KNOB FOR ULTIMATE CONTROL;

SPECIFICATIONS

| Model No. | Max. Torque (ft-lb) @90 psi | Max. Torque (Nm) | Square Drive (in.) | Impacts Per Minute | Free Speed (RPM) | Bolt Capacity (mm) | Weight (kg) | Length (mm) | Vibration Levels M/Sec2 | Air Cons. (CFM) | Rec. Hose Size (in.) | Air Inlet (in.) BSP |
|------------|-----------------------------|------------------|--------------------|--------------------|------------------|--------------------|-------------|-------------|-------------------------|-----------------|----------------------|---------------------|
| AC1150 | 900 | 1250 | 1/2 | 1400 | 9,000 | 15 | 2.04 | 190.50 | 8.1 | 8 | 3/8 | 1/4 |
| AC1178-VXL | 950 | 1290 | 1/2 | 1400 | 7,500 | 19 | 2.90 | 203.20 | 6.5 | 8 | 1/4 | 1/4 |



**Twin
Hammer**



- Provides 1355Nm working torque and 1694Nm of loosening torque;
- Sets industry standard for weight, size & class;
- Hard hitting twin hammer mechanism;
- Durable composite housing;
- Patented ergonomically designed handle;
- Patented quiet tuned exhaust (86 dBA);
- Patented easy operation flip lever forward and reverse;

SPECIFICATIONS

| Model No. | Max. Torque (ft-lb) @90 psi | Max. Torque (Nm) | Square Drive (in.) | Impacts Per Minute | Free Speed (RPM) | Bolt Capacity (mm) | Weight (kg) | Length (mm) | Vibration Levels M/ Sec2 | Air Cons. (CFM) | Rec. Hose Size (in.) | Air Inlet (in.) BSP |
|-----------|-----------------------------------|------------------------|--------------------------|--------------------------|------------------------|--------------------------|----------------|----------------|--------------------------------|-----------------------|----------------------------|---------------------------|
| AC1125 | 1,249 | 1694 | 1/2 | 1600 | 8,500 | 15 | 1.72 | 180,34 | 8.1 | 8 | 3/8 | 1/4 |

AC1777 | 3/4" | "SUPER DUTY" IMPACT WRENCH



- PROVIDES 1900 NM LOOSENING TORQUE ;
- REFINED DESIGN TWIN HAMMER INCREASES BLOW; EFFICIENCY AND DOUBLES HAMMER MECHANISM LIFE
- HAMMER PARTS ARE MADE FROM TRIPLE HEAT TREATED NI-CR-MO ALLOY STEEL FOR ULTIMATE RELIABILITY;
- IMPROVED DESIGN ERGONOMIC GRIP FOR MAXIMUM OPERATING COMFORT;
- VERY FAST TORQUE DEVELOPMENT;
- COMBINED SIX POSITION POWER MANAGEMENT AND REVERSE KNOB FOR ULTIMATE CONTROL;

AC1600-TH-A | 3/4" | "SUPER DUTY" IMPACT WRENCH



- PROVIDES 1900 NM LOOSENING TORQUE;
- HARD HITTING "SUPER DUTY" TWIN HAMMER MECHANISM/
- BEST SUITED FOR BUS/LARGE AUT MOTIVE USE, LARGE AGRICULTURAL SERVICE VEHICLES, LARGE BOLT ASSEMBLY;
- PATENTED ERGONOMICALLY DESIGNED HANDLE;
- PATENTED QUIET TUNED EXHAUST (86 DECIBELS);
- PATENTED EASY OPERATION FLIP LEVER FORWARD AND REVERSE;
- COMBINED THROUGH HOLE AND FRICTION RING SOCKET RETAINER;

AC1778-VXL | 3/4" | IMPACT WRENCH



- PROVIDES 2300 NM LOOSENING TORQUE;
- VIBROTHERM DRIVE® IMPACT WRENCHES INCORPORATE THE COMPLETELY NEW AIRCAT DESIGN IMPACT WRENCH MECHANISM (PATENT PENDING);
- THE NEW MECHANISM REDUCES VIBRATION LEVELS BY BETWEEN 30%-40% AND INCREASED THE LIFE OF THE MECHANISM BY 50%;
- THE LATEST PATENTED AIRCAT MUFFLER SYSTEM PRODUCES THE
- CHARACTERISTIC AIRCAT UNMATCHED LOW NOISE LEVELS;
- THE PATENTED GRIP DESIGN PROVIDE THE CUSTOMARY AIRCAT OPERATOR COMFORT;
- INVESTMENT INTO TOOLING AND MATERIALS AND A TRIPLE INJECTION
- MOLDING PROCESSES ENABLES AIRCAT TO PRODUCE COSMETIC DESIGNS THAT ARE UNMATCHED IN THE INDUSTRY;
- "THREE YEAR WARRANTY";

SPECIFICATIONS

| Model No. | Max. Torque (ft-lb) @90 psi | Max. Torque (Nm) | Square Drive (in.) | Impacts Per Minute | Free Speed (RPM) | Bolt Capacity (mm) | Weight (kg) | Length (mm) | Vibration Levels M/Sec2 | Air Cons. (CFM) | Rec. Hose Size (in.) | Air Inlet (in.) BSP |
|------------|-----------------------------|------------------|--------------------|--------------------|------------------|--------------------|-------------|-------------|-------------------------|-----------------|----------------------|---------------------|
| AC1777 | 1400 | 1900 | 3/4 | 1600 | 9000 | 13 | 3.4 | 97.79 | 12.5 | 60 | 3/8 | 1/4 |
| AC1600-TH | 1400 | 1900 | 3/4 | 900 | 4,500 | 22 | 3.67 | 234.95 | 7.4 | 10 | 1/2 | 3/8 |
| AC1778-VXL | 950 | 1290 | 3/4 | 1400 | 7,500 | 19 | 2.90 | 203.20 | 6.5 | 8 | 1/4 | 1/4 |

AC1900-A & AC1900A-1 | 1" X 8" | EXTENDED "SUPER DUTY" IMPACT WRENCH



- PROVIDES 2580 NM MAXIMUM TORQUE;
- UNIQUE LOW WEAR PINLESS HAMMER;
- ALUMINUM HOUSING WITH RUBBER OVER MOLD FOR INCREASED PROTECTION;
- ERGONOMIC TRIGGER WITH RUBBER INLAY FOR COMFORT;
- RUGGED BOLT-ON SIDE ASSIST HANDLE CAN BE REPOSITIONED ON RIGHT OR LEFT;
- TRIPLE HEAT TREATED NI-CR-MO ALLOY STEEL HAMMER MECHANISM PARTS AND ANVIL PROVIDE ULTIMATE RELIABILITY;
- COMBINED THROUGH HOLE AND FRICTION RING SOCKET RETAINER;



AC1900-A-1
Short anvil
available

AC1991 & AC1991-1 | 1" X 7" | EXTENDED IMPACT WRENCH



- PROVIDES 2850 NM MAXIMUM TORQUE;
- UNMATCHED POWER TO WEIGHT RATIO;
- EXHAUST CAN BE LOCATED AT EITHER THE TOP OR BOTTOM OF TOOL;
- RUBBER HANDLE GRIPS AND RUBBERIZED TRIGGER INSERTS FOR ULTIMATE COMFORT;
- COMBINED FRICTION-RING AND THROUGH-HOLE SOCKET RETAINERS;



AC1991-1 2" Short anvil available



SPECIFICATIONS

| Model No. | Max. Torque (ft-lb) @90 psi | Max. Torque (Nm) | Square Drive (in.) | Impacts Per Minute | Free Speed (RPM) | Bolt Capacity (mm) | Weight (kg) | Length (mm) | Vibration Levels M/ Sec2 | Air Cons. (CFM) | Rec. Hose Size (in.) | Air Inlet (in.) BSP |
|------------|-----------------------------------|------------------------|--------------------------|--------------------------|------------------------|--------------------------|----------------|----------------|--------------------------------|-----------------------|----------------------------|---------------------------|
| AC1900-A | 1900 | 2580 | 1 x 8 | 1600 | 5,500 | 32 | 11.79 | 558.80 | 12.1 | 12 | 1/2 | 1/2 |
| AC1900-A-1 | 1900 | 2580 | 1 | 1600 | 5,500 | 32 | 10.97 | 393.70 | 12.0 | 12 | 1/2 | 1/2 |
| AC1991 | 2100 | 2850 | 1 x 7 | 1600 | 6,000 | 32 | 9.38 | 482.60 | 8.8 | 8 | 1/2 | 1/2 |
| AC1991-1 | 2100 | 2850 | 1 | 1600 | 6,000 | 32 | 7.57 | 327.66 | 8.8 | 8 | 1/2 | 1/2 |

AC1992 | 1" X 8" | EXTENDED STRAIGHT IMPACT WRENCH

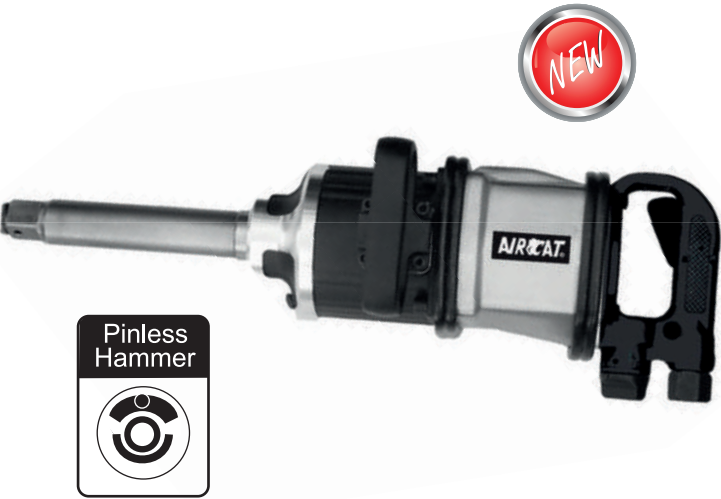


- PROVIDES 2440 NM WORKING TORQUE AND 2700 NM OF LOOSENING TORQUE;
- LOW MAINTENANCE PIN-LESS HAMMER PROVIDES ULTIMATE RELIABILITY AND ADDED HITTING POWER;
- COMBINED FORWARD/REVERSE AND POWER MANAGEMENT SWITCH;
- TRIPLE HEATED NI-CR-MO ALLOY STEEL HAMMER MECHANISM PARTS AND ANVIL PROVIDES ULTIMATE RELIABILITY;
- COMBINED THROUGH HOLE AND FRICTION RING SOCKET RETAINER;



AC1992-1
Short anvil
available

AC1994 | 1" X 8" | EXTENDED "SUPER DUTY" STRAIGHT IMPACT WRENCH



- PROVIDES 3120 NM WORKING TORQUE AND 3400 NM OF LOOSENING TORQUE;
- LOW MAINTENANCE PIN-LESS HAMMER PROVIDES ULTIMATE RELIABILITY AND ADDED HITTING POWER;
- COMBINED FORWARD/REVERSE AND POWER MANAGEMENT SWITCH;
- TRIPLE HEAT TREATED ALLOY STEEL HAMMER CAGE AND ANVIL;
- RUGGED CONSTRUCTION WITH RELIABLE BOLT-ON ASSIST SIDE HANDLE;
- HAMMER CASE CAN BE REPOSITIONED FOR THE SIDE HANDLE TO BE ON RIGHT OR LEFT SIDE;
- BRUSHED ALUMINUM MOTOR HOUSING;
- AIRCAT'S MOST RELIABLE 1" IMPACT WRENCH;
- COMBINED THROUGH HOLE AND FRICTION RING SOCKET RETAINER;

SPECIFICATIONS

| Model No. | Max. Torque (ft-lb) @90 psi | Max. Torque (Nm) | Square Drive (in.) | Impacts Per Minute | Free Speed (RPM) | Bolt Capacity (mm) | Weight (kg) | Length (mm) | Vibration Levels M/Sec2 | Air Cons. (CFM) | Rec. Hose Size (in.) | Air Inlet (in.) BSP |
|-----------|-----------------------------|------------------|--------------------|--------------------|------------------|--------------------|-------------|-------------|-------------------------|-----------------|----------------------|---------------------|
| AC1992 | 1800 | 2440 | 1 x 8 | 1600 | 5000 | 25.4 | 11.79 | 558.80 | 12.1 | 12 | 1/2 | 1/2 |
| AC1992-1 | 1800 | 2440 | 1 | 1600 | 5000 | 25.4 | 10.52 | 393.70 | 12.0 | 12 | 1/2 | 1/2 |
| AC1994 | 2300 | 3120 | 1 x 8 | 1100 | 4500 | 25.4 | 15.87 | 660.40 | 12.0 | 16 | 1/2 | 1/2 |

AC1993-VXL | 1" X 7" | VIBROTHERM IMPACT WRENCH

VIBROTHERM[®] by AIRCAT[®] DRIVE



- PROVIDES 3110 NM OF LOOSENING TORQUE;
- VIBROTHERM DRIVE[®] IMPACT WRENCHES INCORPORATES THE NEW PATENTED AIRCAT DESIGN IMPACT WRENCH MECHANISM ;
- THE NEW MECHANISM REDUCES VIBRATION LEVELS BY 30%-40% AND INCREASES THE LIFE OF THE MECHANISM BY 50%;
- 6,000 RPM FREE SPEED;
- UNMATCHED POWER-TO-WEIGHT RATIO;
- RUBBER HANDLE GRIP AND RUBBERIZED TRIGGER INSERTS FOR ULTIMATE COMFORT;
- COMBINED FRICTION-RING AND THROUGH-HOLE SOCKET RETAINER
- INVESTMENT IN TOOLING, MATERIALS, AND THE TRIPLE INJECTION MOLDING PROCESSES ENABLES AIRCAT TO PRODUCE COSMETIC DESIGNS THAT ARE UNMATCHED IN THE INDUSTRY;

AC1993-1-VXL | 1" X 2" | VIBROTHERM IMPACT WRENCH

VIBROTHERM[®] by AIRCAT[®] DRIVE



- PROVIDES 3110 NM OF LOOSENING TORQUE;
- VIBROTHERM DRIVE[®] IMPACT WRENCHES INCORPORATES THE NEW PATENTED AIRCAT DESIGN IMPACT WRENCH MECHANISM ;
- THE NEW MECHANISM REDUCES VIBRATION LEVELS BY 30%-40% AND INCREASES THE LIFE OF THE MECHANISM BY 50%;
- 6,000 RPM FREE SPEED;
- UNMATCHED POWER-TO-WEIGHT RATIO;
- RUBBER HANDLE GRIP AND RUBBERIZED TRIGGER INSERTS FOR ULTIMATE COMFORT;
- COMBINED FRICTION-RING AND THROUGH-HOLE SOCKET RETAINER
- INVESTMENT IN TOOLING, MATERIALS, AND THE TRIPLE INJECTION MOLDING PROCESSES ENABLES AIRCAT TO PRODUCE COSMETIC DESIGNS THAT ARE UNMATCHED IN THE INDUSTRY;

SPECIFICATIONS

| Model No. | Max. Torque (ft-lb) @90 psi | Max. Torque (Nm) | Square Drive (in.) | Impacts Per Minute | Free Speed (RPM) | Bolt Capacity (mm) | Weight (kg) | Length (mm) | Vibration Levels M/Sec2 | Air Cons. (CFM) | Rec. Hose Size (in.) | Air Inlet (in.) BSP |
|--------------|-----------------------------|------------------|--------------------|--------------------|------------------|--------------------|-------------|-------------|-------------------------|-----------------|----------------------|---------------------|
| AC1993-VXL | 2100 | 2850 | 1 x 7 | 950 | 6,000 | 32 | 9.16 | 474.98 | 12.7 | 10 | 1/2 | 1/2 |
| AC1993-1-VXL | 2100 | 2850 | 1 | 950 | 6,000 | 32 | 8.39 | 340.36 | 12.7 | 10 | 1/2 | 1/2 |

AC1600-TH-A1 | 1" | COMPOSITE IMPACT WRENCH



- PROVIDES 1900 NM LOOSENING TORQUE;
- HARD HITTING "SUPER DUTY" TWIN HAMMER MECHANISM/
- BEST SUITED FOR BUS/LARGE AUT MOTIVE USE, LARGE AGRICULTURAL SERVICE VEHICLES, LARGE BOLT ASSEMBLY;
- PATENTED ERGONOMICALLY DESIGNED HANDLE;
- PATENTED QUIET TUNED EXHAUST (86 DECIBELS);
- PATENTED EASY OPERATION FLIP LEVER FORWARD AND REVERSE;
- COMBINED THROUGH HOLE AND FRICTION RING SOCKET RETAINER;

AC1870-P | 1" | "SUPER DUTY" PISTOL IMPACT WRENCH



- PROVIDES 2850 NM MAXIMUM TORQUE;
- UNMATCHED POWER TO WEIGHT RATIO - WEIGHS ONLY 5.87 KG;
- 1870-P HAS LOW WEIGHT IMPACT-RESISTANT HOUSING;
- FEATURES COMBINED FRICTION-RING AND THROUGH-HOLE SOCKET RETAINERS;
- CRANKED SIDE HANDLE DESIGN AVOIDS OPERATORS HAND GETTING TOO CLOSE TO WORK AREA;

AC1890-P | 1" | PISTOL IMPACT WRENCH



- PROVIDES 2750 NM LOOSENING TORQUE;
- TWO JAW CLUTCH PROVIDES UNPARALLELED TORQUE OUTPUT AND INCREASES THE LIFE OF THE HAMMER BEYOND OTHER IMPACT MECHANISMS;
- THE TWO JAW CLUTCH DOES NOT WASTE ENERGY; THIS COMBINED WITH THE PRECISION AIR MOTOR DRAMATICALLY REDUCES AIR CONSUMPTION OVER OTHER 1" IMPACT WRENCHES TO 24.5 CFM FREE RUNNING AND 6.1 AVERAGE;
- DESIGNED FOR FLEET AND OFF ROAD VEHICLE SERVICE AND STEEL ERECTION
- STEEL HAMMER CASE AND HEAVY DUTY CAST HOUSING HANDLE PROVIDE ULTIMATE RELIABILITY
- COMBINED THROUGH HOLE AND FRICTION RING SOCKET RETAINER

SPECIFICATIONS

| Model No. | Max. Torque (ft-lb) @90 psi | Max. Torque (Nm) | Square Drive (in.) | Impacts Per Minute | Free Speed (RPM) | Bolt Capacity (mm) | Weight (kg) | Length (mm) | Vibration Levels M/Sec2 | Air Cons. (CFM) | Rec. Hose Size (in.) | Air Inlet (in.) BSP |
|--------------|-----------------------------|------------------|--------------------|--------------------|------------------|--------------------|-------------|-------------|-------------------------|-----------------|----------------------|---------------------|
| AC1600-TH-A1 | 1400 | 1900 | 1 | 1100 | 4,500 | 32 | 3.74 | 234.95 | 7.4 | 10 | 1/2 | 3/8 |
| AC1870-P | 2100 | 2850 | 1 | 1400 | 7,500 | 32 | 5.87 | 271.78 | 8.6 | 7.5 | 1/2 | 1/2 |
| AC1890-P | 2000 | 2750 | 1 | 1200 | 4,200 | 32 | 10.88 | 279.40 | 12.6 | 6.1 | 1/2 | 1/2 |

IMPACT WRENCH ACCESSORIES

SHORT SOCKET

3/8" DRIVE METRIC

| | | | |
|------|----------|------|----------|
| 8mm | SM3808SD | 24mm | SM3424SD |
| 9mm | SM3809SD | 26mm | SM3426SD |
| 10mm | SM3810SD | 27mm | SM3427SD |
| 11mm | SM3811SD | 28mm | SM3428SD |
| 12mm | SM3812SD | 29mm | SM3429SD |
| 13mm | SM3813SD | 30mm | SM3430SD |
| 14mm | SM3814SD | 32mm | SM3432SD |
| 15mm | SM3815SD | 33mm | SM3433SD |

1/2" DRIVE METRIC

| | | | |
|------|----------|------|---------|
| 10mm | SM1210SD | | |
| 11mm | SM1211SD | | |
| 12mm | SM1212SD | | |
| 13mm | SM1213SD | | |
| 14mm | SM1214SD | 27mm | SM127SD |
| 15mm | SM1215SD | 28mm | SM128SD |
| 16mm | SM1216SD | 29mm | SM129SD |
| 17mm | SM1217SD | 30mm | SM130SD |
| 18mm | SM1218SD | 32mm | SM132SD |
| 19mm | SM1219SD | 33mm | SM133SD |
| 20mm | SM1220SD | 34mm | SM134SD |
| 21mm | SM1221SD | 35mm | SM135SD |
| 22mm | SM1222SD | 36mm | SM136SD |
| 23mm | SM1223SD | 37mm | SM137SD |
| 24mm | SM1224SD | 38mm | SM138SD |
| 25mm | SM1225SD | 41mm | SM141SD |
| 26mm | SM1226SD | 46mm | SM146SD |
| 27mm | SM1227SD | | |

1" DRIVE METRIC

| | |
|------|---------|
| 27mm | SM127SD |
| 28mm | SM128SD |
| 29mm | SM129SD |
| 30mm | SM130SD |
| 32mm | SM132SD |
| 33mm | SM133SD |
| 34mm | SM134SD |
| 35mm | SM135SD |
| 36mm | SM136SD |
| 37mm | SM137SD |
| 38mm | SM138SD |
| 41mm | SM141SD |
| 46mm | SM146SD |

DEEP SOCKET

3/8" DRIVE METRIC

| | | | |
|------|----------|------|----------|
| 8mm | SM3808DD | 24mm | SM3424DD |
| 9mm | SM3809DD | 26mm | SM3426DD |
| 10mm | SM3810DD | 27mm | SM3427DD |
| 11mm | SM3811DD | 28mm | SM3428DD |
| 12mm | SM3812DD | 29mm | SM3429DD |
| 13mm | SM3813DD | 30mm | SM3430DD |
| 14mm | SM3814DD | 32mm | SM3432DD |
| 15mm | SM3815DD | 33mm | SM3433DD |

1/2" DRIVE METRIC

| | | | |
|------|----------|------|---------|
| 10mm | SM1210DD | | |
| 11mm | SM1211DD | | |
| 12mm | SM1212DD | | |
| 13mm | SM1213DD | | |
| 14mm | SM1214DD | 27mm | SM127DD |
| 15mm | SM1215DD | 28mm | SM128DD |
| 16mm | SM1216DD | 29mm | SM129DD |
| 17mm | SM1217DD | 30mm | SM130DD |
| 18mm | SM1218DD | 32mm | SM132DD |
| 19mm | SM1219DD | 33mm | SM133DD |
| 20mm | SM1220DD | 34mm | SM134DD |
| 21mm | SM1221DD | 35mm | SM135DD |
| 22mm | SM1222DD | 36mm | SM136DD |
| 23mm | SM1223DD | 37mm | SM137DD |
| 24mm | SM1224DD | 38mm | SM138DD |
| 25mm | SM1225DD | 41mm | SM141DD |
| 26mm | SM1226DD | 46mm | SM146DD |
| 27mm | SM1227DD | | |

1" DRIVE METRIC

| | |
|------|---------|
| 27mm | SM127DD |
| 28mm | SM128DD |
| 29mm | SM129DD |
| 30mm | SM130DD |
| 32mm | SM132DD |
| 33mm | SM133DD |
| 34mm | SM134DD |
| 35mm | SM135DD |
| 36mm | SM136DD |
| 37mm | SM137DD |
| 38mm | SM138DD |
| 41mm | SM141DD |
| 46mm | SM146DD |

SOCKET SETS

H0082

1/2" Drive
Metric Socket Set



11
PIECE

Socket sizes
12, 13, 14, 15,
16, 17, 18, 19,
21, 22, 24 mm

H0082-MM

1/2" Dr. Deep
Impact Set



11
PIECE

Socket sizes
12, 13, 14, 15,
16, 17, 18, 19,
21, 22, 24 mm

H0086-1

3/4" Drive Metric
Socket Set



8
PIECE

Socket sizes
24, 27, 29,
30, 32, 33,
36, 38mm

H0093-1

1" Dr Metric
Socket Set 4pcs



8
PIECE

Socket sizes
24, 27, 29,
30, 32, 33,
36, 38mm

H0095

1" Dr Metric
Socket Set



4
PIECE

Socket sizes
27, 30,
32, 33mm

3/8" & 1/2" SINGLE DEPTH SOCKETS



3/4" & 1" DOUBLE DEPTH SOCKETS



ADAPTORS



3/8" female to 1/2" male
1/2" female to 3/8" male
1/2" female to 3/4" male
3/4" female to 1/2" male
3/4" female to 1" male
1" female to 3/4" male
1 1/2" female to 1" male

Part No.
SA38F12M
SA12F38M
SA12F34M
SA34F12M
SA34F1M
SA1F34M
SA112F1M

UNIVERSAL JOINTS



3/8" square drive
1/2" square drive
3/4" square drive
1" square drive

Part No.
UJ38
UJ12
UJ34
UJ1

BOOTS



| | |
|-------------------|----------------------------------|
| 1056-XL-BB | Boot for AIRCAT 1056/1076 |
| 1150-BB | AC1150 Rubber Boot |
| 1250-KBR | AC1250-K Rubber Boot |
| 1355-XLBR | Boot for AIRCAT 1355 |
| 1450-BB | Boot for AIRCAT 1450 USE 1150-BB |
| 1600-THBR | Boot for AIRCAT 1600 |
| 1058-VXLBB | Boot for AIRCAT AC1058-VXL |
| 1059-VXLBB | Boot for AIRCAT AC1059-VXL |
| 1178-VXLBB | Boot for AIRCAT AC1178-VXL |
| 1778-VXLBB | Boot for AIRCAT AC1778-VXL |

EXTENSION BARS



| | 3" | 6" | 8" | 10" | 12" |
|-------------------|-------|-------|-------|--------|--------|
| 3/8" square drive | EX383 | EX386 | | | |
| 1/2" square drive | EX123 | EX126 | | EX1210 | EX1212 |
| 3/4" square drive | | EX346 | EX348 | EX3410 | EX3412 |
| 1" square drive | | EX16 | EX18 | EX110 | EX112 |



RATCHETS

Whether you're a car mechanic, a skilled craftsman, or you simply like doing DIY projects around the house, there's one tool that you must have: a ratchet. For years, ratchets have been the go-to tool for loosening and tightening up bolts and nuts. With the advent of technology, more advanced alternatives

AC800 | 1/4" | MINI COMPOSITE SINGLE PAWL RATCHET



- 50 NM MAXIMUM TORQUE;
- STRONGEST 1/4" RATCHET IN ITS CLASS!;
- SINGLE PAWL MECHANISM;
- FAST RUNDOWN 320 RPM;
- SUPERIOR INTERNAL MECHANICS;
- PATENTED QUIET TUNED EXHAUST (82 DBA);
- FEATHER TRIGGER FOR CONTROL;
- ERGONOMICALLY DESIGNED HOUSING;
- MOST COMFORTABLE TRIGGER LEVER IN THE INDUSTRY;

AC801 | 3/8" | MINI COMPOSITE SINGLE PAWL RATCHET



- 50 NM MAXIMUM TORQUE;
- STRONGEST 3/8" RATCHET IN ITS CLASS!;
- SINGLE PAWL MECHANISM;
- FAST RUNDOWN 320 RPM;
- SUPERIOR INTERNAL MECHANICS;
- PATENTED QUIET TUNED EXHAUST (82 DBA);
- FEATHER TRIGGER FOR CONTROL;
- ERGONOMICALLY DESIGNED HOUSING;
- MOST COMFORTABLE TRIGGER LEVER IN THE INDUSTRY;

AC802 | 3/8" | COMPOSITE TWIN PAWL RATCHET



- 100 NM MAXIMUM TORQUE;
- DURABLE TWIN PAWL MECHANISM;
- FAST RUNDOWN 280 RPM;
- PATENTED QUIET TUNED EXHAUST (82 DBA);
- FEATHER TRIGGER FOR CONTROL;
- ERGONOMICALLY DESIGNED HOUSING;
- MOST COMFORTABLE TRIGGER LEVER IN THE INDUSTRY;

AC802-5 | 1/2" | COMPOSITE TWIN PAWL RATCHET



- 100 NM MAXIMUM TORQUE;
- DURABLE TWIN PAWL MECHANISM;
- FAST RUNDOWN 280 RPM;
- PATENTED QUIET TUNED EXHAUST (82 DBA);
- FEATHER TRIGGER FOR CONTROL;
- ERGONOMICALLY DESIGNED HOUSING;
- MOST COMFORTABLE TRIGGER LEVER IN THE INDUSTRY;

SPECIFICATIONS

| Model No. | Max. Torque (ft-lb) @90 psi | Max. Torque (Nm) | Square Drive (in.) | Free Speed (RPM) | Bolt Ca- pacity (mm) | Weight (kg) | Length (mm) | Vibration Levels M/ Sec2 | Air Cons. (CFM) | Rec. Hose Size (in.) | Air Inlet (in.) BSP |
|-----------|-----------------------------------|------------------------|--------------------------|------------------------|----------------------------|----------------|----------------|--------------------------------|--------------------|----------------------------|---------------------------|
| AC800 | 35 | 50 | 1/4 | 320 | 10 | 0.72 | 215.90 | 2.3 | 4 | 3/8 | 1/4 |
| AC801 | 35 | 50 | 3/8 | 320 | 10 | 0.73 | 215.90 | 2.3 | 4 | 3/8 | 1/4 |
| AC802 | 70 | 100 | 3/8 / 1/2 | 280 | 10 | 1.24 | 266.70 | 3.2 | 4 | 3/8 | 1/4 |
| AC802-5 | 70 | 100 | 3/8 / 1/2 | 280 | 10 | 1.24 | 266.70 | 3.2 | 4 | 3/8 | 1/4 |

AC804 | 1/4" | MINI COMPOSITE SINGLE PAWL RATCHET



- 40 NM MAXIMUM TORQUE
- 280 RPM PROVIDES FAST RUN-DOWN
- THE SINGLE PIECE, HIGH GRADE, ALLOY STEEL HOUSING RATCHET HEAD INCREASES RELIABILITY AND ELIMINATES "LOOSENING" OF THE RATCHET HEAD
- UNIQUELY DESIGNED TRANSMISSION GEAR INCREASES THE RATE OF TORQUE BUILD-UP
- ERGONOMIC COMPOSITE OVER MOLD GRIP PROVIDES COMFORT

AC805-HT | 3/8" | HIGH TORQUE RATCHET



- 180 NM MAXIMUM TORQUE;
- LATEST DESIGN RATCHET HEAD ELIMINATES "SPREADING";
- RELIABLE SINGLE PAWL DESIGN;
- EXTRA LARGE RATCHET HEAD INCREASES RELIABILITY;
- RAPID RESPONSE AND VARIABLE SPEED TRIGGER;
- QUIET FOR SUCH A POWERFUL RATCHET (84 DBA);
- ERGONOMICALLY DESIGNED CONTOURED GRIP AND TRIGGER PROVIDE ULTIMATE OPERATING COMFORT;

AC805-HT-5 | 1/2" | HIGH TORQUE RATCHET



- 180 NM MAXIMUM TORQUE;
- LATEST DESIGN RATCHET HEAD ELIMINATES "SPREADING";
- RELIABLE SINGLE PAWL DESIGN;
- EXTRA LARGE RATCHET HEAD INCREASES RELIABILITY;
- RAPID RESPONSE AND VARIABLE SPEED TRIGGER;
- QUIET FOR SUCH A POWERFUL RATCHET (84 DBA);
- ERGONOMICALLY DESIGNED CONTOURED GRIP AND TRIGGER PROVIDE ULTIMATE OPERATING COMFORT;

AC806 | 3/8" | HIGH PERFORMANCE RATCHET



- 108 NM OF MAXIMUM TORQUE;
- 200 RPM;
- VARIABLE SPEED THROTTLE FOR CONTROL;
- SOFT TOUCH COATED HANDLE GRIP FOR COMFORT;
- 360 ROTATIONAL EXHAUST DIRECTS AIR AWAY FROM USER AND WORK AREA;
- ENLARGED RATCHET HEAD FOR RELIABILITY;

SPECIFICATIONS

| Model No. | Max. Torque (ft-lb) @90 psi | Max. Torque (Nm) | Square Drive (in.) | Free Speed (RPM) | Bolt Ca- pacity (mm) | Weight (kg) | Length (mm) | Vibration Levels M/ Sec2 | Air Cons. (CFM) | Rec. Hose Size (in.) | Air Inlet (in.) BSP |
|------------|-----------------------------------|------------------------|--------------------------|------------------------|----------------------------|----------------|----------------|--------------------------------|--------------------|----------------------------|---------------------------|
| AC804 | 30 | 40 | 1/4 | 280 | 10 | 0.73 | 181.61 | 2.3 | 4 | 3/8 | 1/4 |
| AC805-HT | 130 | 180 | 3/8 | 180 | 16 | 1.49 | 316.23 | 6.6 | 6 | 3/8 | 1/4 |
| AC805-HT-5 | 130 | 180 | 1/2 | 180 | 16 | 1.49 | 316.23 | 6.6 | 6 | 3/8 | 1/4 |
| AC806 | 80 | 108 | 3/8 | 200 | 10 | 1.18 | 276.86 | 3.2 | 4 | 3/8 | 1/4 |

AC807 | 3/8" | "MINI" RATCHET



- 50 NM MAXIMUM TORQUE;
- 300 RPM PROVIDES FAST RUN-DOWN;
- BUILT-IN QUICK SOCKET RELEASE BUTTON;
- ERGONOMIC COMPOSITE OVER MOLD GRIP PROVIDES COMFORT;
- GREAT FOR WORK AROUND RADIATORS AND CONFINED SPACES;
- ONLY 13.7 CM LONG AND WEIGHS ONLY 0.49 KG;

AC807-25 | 1/4" | "MINI" RATCHET



- 47 NM MAXIMUM TORQUE;
- 300 RPM PROVIDES FAST RUN-DOWN;
- ERGONOMIC COMPOSITE OVER MOLD GRIP PROVIDES COMFORT;
- GREAT FOR WORK AROUND RADIATORS AND CONFINED SPACES;
- ONLY 13.7 CM LONG AND WEIGHS ONLY 0.49 KG;

AC808 | LONG REACH SERIES RATCHETS



- 808-15 50 NM MAXIMUM TORQUE (15.3" LONG);
- 808-15-25 50 NM MAXIMUM TORQUE (15.3" LONG);
- 808-22 90 NM MAXIMUM TORQUE (22.5" LONG);
- EXCLUSIVE AIRCAT DESIGN;
- EXTENDED DRIVE SHAFTS PROVIDE ACCESS FOR HARD TO REACH FASTENERS;
- HIGH GRADE MATERIALS AND ADDITIONAL SUPPORT BEARINGS PROVIDE RELIABILITY;

AC809 | 3/8" | FLAT HEAD RATCHET



- 81 NM MAXIMUM TORQUE;
- 350 RPM RUN-DOWN SPEED;
- LOW PROFILE FLAT HEAD ALLOWS ACCESS INTO CONFINED WORK AREAS;
- SEALED HEAD DESIGN ELIMINATES DIRT AND DEBRIS ENTERING THE RATCHET MECHANISM INCREASING RELIABILITY;
- CONVENIENT AND COMFORTABLE TRIGGER OPERATION;
- QUICK CHANGE ROTATIONAL FORWARD/REVERSE SWITCH;
- 360° ROTATIONAL EXHAUST DEFLECTOR ALLOWS EXHAUST AIR TO BE DIRECTED AS PREFERRED;

SPECIFICATIONS

| Model No. | Max. Torque (ft-lb) @90 psi | Max. Torque (Nm) | Square Drive (in.) | Free Speed (RPM) | Bolt Ca- pacity (mm) | Weight (kg) | Length (mm) | Vibration Levels M/ Sec2 | Air Cons. (CFM) | Rec. Hose Size (in.) | Air Inlet (in.) BSP |
|----------------------|-----------------------------------|------------------------|--------------------------|------------------------|----------------------------|----------------|----------------|--------------------------------|--------------------|----------------------------|---------------------------|
| AC807 | 35 | 50 | 3/4 | 300 | 9.5 | 0.49 | 137.16 | 2.3 | 3 | 3/8 | 1/4 |
| AC807-25 | 35 | 50 | 1/4 | 300 | 9.5 | 0.49 | 137.16 | 2.3 | 3 | 3/8 | 1/4 |
| AC808-15 / 808-15-25 | 30 | 50 | 3/8 1/4 | 200 | 10 | 1.4 | 388.62 | 5.7 | 4 | 3/8 | 1/4 |
| AC809 | 60 | 81 | 3/8 | 350 | 10 | 1.31 | 314.96 | 2.3 | 4 | 3/8 | 1/4 |

AC809-5 | 1/2" | FLAT HEAD RATCHET



- 81 NM MAXIMUM TORQUE;
- 350 RPM RUN-DOWN SPEED;
- LOW PROFILE FLAT HEAD ALLOWS ACCESS INTO CONFINED WORK AREAS;
- SEALED HEAD DESIGN ELIMINATES DIRT AND DEBRIS ENTERING THE RATCH-ET MECHANISM INCREASING RELIABILITY;
- CONVENIENT AND COMFORTABLE TRIGGER OPERATION;
- QUICK CHANGE ROTATIONAL FORWARD/REVERSE SWITCH;
- 360° ROTATIONAL EXHAUST DEFLECTOR ALLOWS EXHAUST AIR TO BE DI-RECTED AS PREFERRED;

AC810 | 3/8" | STUBBY IMPACT COMPOSITE RATCHET



- 50 FT-LB MAXIMUM TORQUE
- 550 RPM PROVIDES ULTRA FAST RUN-DOWN
- ROLLER CLUTCH IMPACT MECHANISM PREVENTS KICK-BACK
- FWD/REV SWITCH AND SAFETY LOCK PREVENTS UNWANTED DIRECTIONAL CHANGES
- SILENCING TECHNOLOGY REDUCES THE NOISE LEVEL TO 86 DBA

AC811 | 1/4" | 30° FLEX HEAD RATCHET



- 48 NM MAXIMUM TORQUE
- 240 RPM FREE SPEED
- 3 POSITION FLEX HEAD DESIGN
- ERGONOMICALLY DESIGNED HOUSING
- FEATHER TRIGGER FOR CONTROL
- PATENTED QUIET TUNED EXHAUST (76 DBA)

SPECIFICATIONS

| Model No. | Max. Torque (ft-lb) @90 psi | Max. Torque (Nm) | Square Drive (in.) | Impacts Per Minute | Free Speed (RPM) | Bolt Capacity (mm) | Weight (kg) | Length (mm) | Vibration Levels M/Sec2 | Air Cons. (CFM) | Rec. Hose Size (in.) | Air Inlet (in.) BSP |
|-----------|-----------------------------|------------------|--------------------|--------------------|------------------|--------------------|-------------|-------------|-------------------------|-----------------|----------------------|---------------------|
| AC809-5 | 60 | 81 | 1/2 | 350 | 10 | 1.31 | 314,96 | 2.3 | 4 | 3/8 | 1/4 | 1/4 |
| AC810 | 50 | 68 | 3/8 | 350 | 550 | 1.31 | 0.64 | 160,00 | 4 | 4 | 3/8 | 1/4 |
| AC811 | 35 | 48 | 1/4 | 350 | 240 | 1.31 | 0.85 | 247,00 | 4 | 4 | 3/8 | 1/4 |

RATCHETS ACCESSORIES

SHORT SOCKET

3/8" DRIVE METRIC

| | | | |
|------|----------|------|----------|
| 8mm | SM3808SD | 24mm | SM3424SD |
| 9mm | SM3809SD | 26mm | SM3426SD |
| 10mm | SM3810SD | 27mm | SM3427SD |
| 11mm | SM3811SD | 28mm | SM3428SD |
| 12mm | SM3812SD | 29mm | SM3429SD |
| 13mm | SM3813SD | 30mm | SM3430SD |
| 14mm | SM3814SD | 32mm | SM3432SD |
| 15mm | SM3815SD | 33mm | SM3433SD |

1/2" DRIVE METRIC

| | | | |
|------|----------|------|---------|
| 10mm | SM1210SD | | |
| 11mm | SM1211SD | | |
| 12mm | SM1212SD | | |
| 13mm | SM1213SD | | |
| 14mm | SM1214SD | | |
| 15mm | SM1215SD | 27mm | SM127SD |
| 16mm | SM1216SD | 28mm | SM128SD |
| 17mm | SM1217SD | 29mm | SM129SD |
| 18mm | SM1218SD | 30mm | SM130SD |
| 19mm | SM1219SD | 32mm | SM132SD |
| 20mm | SM1220SD | 33mm | SM133SD |
| 21mm | SM1221SD | 34mm | SM134SD |
| 22mm | SM1222SD | 35mm | SM135SD |
| 23mm | SM1223SD | 36mm | SM136SD |
| 24mm | SM1224SD | 37mm | SM137SD |
| 25mm | SM1225SD | 38mm | SM138SD |
| 26mm | SM1226SD | 41mm | SM141SD |
| 27mm | SM1227SD | 46mm | SM146SD |

1" DRIVE METRIC

| | |
|------|---------|
| 27mm | SM127SD |
| 28mm | SM128SD |
| 29mm | SM129SD |
| 30mm | SM130SD |
| 32mm | SM132SD |
| 33mm | SM133SD |
| 34mm | SM134SD |
| 35mm | SM135SD |
| 36mm | SM136SD |
| 37mm | SM137SD |
| 38mm | SM138SD |
| 41mm | SM141SD |
| 46mm | SM146SD |

DEEP SOCKET

3/8" DRIVE METRIC

| | | | |
|------|----------|------|----------|
| 8mm | SM3808DD | 24mm | SM3424DD |
| 9mm | SM3809DD | 26mm | SM3426DD |
| 10mm | SM3810DD | 27mm | SM3427DD |
| 11mm | SM3811DD | 28mm | SM3428DD |
| 12mm | SM3812DD | 29mm | SM3429DD |
| 13mm | SM3813DD | 30mm | SM3430DD |
| 14mm | SM3814DD | 32mm | SM3432DD |
| 15mm | SM3815DD | 33mm | SM3433DD |

1/2" DRIVE METRIC

| | | | |
|------|----------|------|---------|
| 10mm | SM1210DD | | |
| 11mm | SM1211DD | | |
| 12mm | SM1212DD | | |
| 13mm | SM1213DD | | |
| 14mm | SM1214DD | | |
| 15mm | SM1215DD | 27mm | SM127DD |
| 16mm | SM1216DD | 28mm | SM128DD |
| 17mm | SM1217DD | 29mm | SM129DD |
| 18mm | SM1218DD | 30mm | SM130DD |
| 19mm | SM1219DD | 32mm | SM132DD |
| 20mm | SM1220DD | 33mm | SM133DD |
| 21mm | SM1221DD | 34mm | SM134DD |
| 22mm | SM1222DD | 35mm | SM135DD |
| 23mm | SM1223DD | 36mm | SM136DD |
| 24mm | SM1224DD | 37mm | SM137DD |
| 25mm | SM1225DD | 38mm | SM138DD |
| 26mm | SM1226DD | 41mm | SM141DD |
| 27mm | SM1227DD | 46mm | SM146DD |

1" DRIVE METRIC

| | |
|------|---------|
| 27mm | SM127DD |
| 28mm | SM128DD |
| 29mm | SM129DD |
| 30mm | SM130DD |
| 32mm | SM132DD |
| 33mm | SM133DD |
| 34mm | SM134DD |
| 35mm | SM135DD |
| 36mm | SM136DD |
| 37mm | SM137DD |
| 38mm | SM138DD |
| 41mm | SM141DD |
| 46mm | SM146DD |

SOCKET SETS

H0082

1/2" Drive
Metric Socket Set



11
PIECE

Socket sizes
12, 13, 14, 15, 16,
17, 18, 19, 21, 22,
24 mm

H0082-MM

1/2" Dr. Deep
Impact Set



11
PIECE

Socket sizes
12, 13, 14, 15, 16,
17, 18, 19, 21, 22,
24 mm

H0086-1

3/4" Drive Metric
Socket Set



8
PIECE

Socket sizes 24,
27, 29,
30, 32, 33,
36, 38mm

H0093-1

1" Dr Metric
Socket Set 4pcs



8
PIECE

Socket sizes 24,
27, 29,
30, 32, 33,
36, 38mm

H0095

1" Dr Metric
Socket Set



4
PIECE

Socket sizes 27,
30,
32, 33mm

3/8" & 1/2" SINGLE DEPTH SOCKETS



3/4" & 1" DOUBLE DEPTH SOCKETS



UNIVERSAL JOINTS



3/8" square drive
1/2" square drive
3/4" square drive
1" square drive

Part No.
UJ38
UJ12
UJ34
UJ1

ADAPTORS



3/8" female to 1/2" male
1/2" female to 3/8" male
1/2" female to 3/4" male
3/4" female to 1/2" male
3/4" female to 1" male
1" female to 3/4" male
1 1/2" female to 1" male

Part No.
SA38F12M
SA12F38M
SA12F34M
SA34F12M
SA34F1M
SA1F34M
SA112F1M

EXTENSION BARS



3/8" square drive
1/2" square drive
3/4" square drive
1" square drive

| 3" | 6" | 8" | 10" | 12" |
|-------|-------|-------|--------|--------|
| EX383 | EX386 | | | |
| EX123 | EX126 | | EX1210 | EX1212 |
| | EX346 | EX348 | EX3410 | EX3412 |
| | EX16 | EX18 | EX110 | EX112 |

GRINDERS AND CUT-OFF TOOLS

AIRCAT® Die Grinders and Cut-off Tools offer patented internal silencing and comfort. The AIRCAT® trigger is ergonomically designed, providing an easier push and pull than other brands. For precision, AIRCAT® features low service run-out and long life.



AIRCAT®

AC6200 | COMPOSITE STRAIGHT MINI DIE GRINDER



- PATENTED QUIET TUNED EXHAUST (82 DBA);
- SUPERIOR STEEL GRADE INTERNAL BEARINGS FOR LONGER LIFE;
- FEATHER TRIGGER FOR BETTER SPEED CONTROL;
- ERGONOMICALLY DESIGNED HOUSING;
- MOST COMFORTABLE TRIGGER IN THE INDUSTRY

AC6201 | COMPOSITE STRAIGHT DIE GRINDER



- PATENTED QUIET TUNED EXHAUST (82 DBA);
- SUPERIOR STEEL GRADE INTERNAL BEARINGS FOR LONGER LIFE;
- FEATHER TRIGGER FOR BETTER SPEED CONTROL;
- ERGONOMICALLY DESIGNED HOUSING;
- MOST COMFORTABLE TRIGGER IN THE INDUSTRY

AC6210 | COMPOSITE STRAIGHT DIE GRINDER EXTENDED SHANK



- PATENTED QUIET TUNED EXHAUST (82 DBA);
- SUPERIOR STEEL GRADE INTERNAL BEARINGS FOR LONGER LIFE;
- FEATHER TRIGGER FOR BETTER SPEED CONTROL;
- ERGONOMICALLY DESIGNED HOUSING;
- EXTENDED HEAD TO REACH IN TIGHT SPOTS;
- MOST COMFORTABLE TRIGGER IN THE INDUSTRY;

AC6255 | COMPOSITE ANGLE DIE GRINDER



- SUPERIOR STEEL GRADE INTERNAL BEVEL GEARS FOR LONGER LIFE;
- FEATHER TRIGGER FOR BETTER SPEED CONTROL;
- PATENTED QUIET TECHNOLOGY (82 DBA);
- EXCELLENT FOR HIGH SPEED BLENDING, SMOOTHING, PORTING AND DEBURRING IN CONFINED AREAS;
- ERGONOMICALLY DESIGNED HOUSING;
- MOST COMFORTABLE TRIGGER IN THE INDUSTRY;

SPECIFICATIONS

| Model No. | Free Speed (RPM) | Motor (HP) | Collet Size (mm) | Gears | Exhaust | Weight (kg) | Length (mm) | Vibration Levels M/Sec2 | Air Cons. (CFM) | Rec. Hose Size (in.) | Air Inlet (in.) BSP |
|-----------|------------------|------------|------------------|--------------|---------|-------------|-------------|-------------------------|-----------------|----------------------|---------------------|
| AC6200 | 20,000 | 0.40 | 6 | Direct Drive | Rear | 0.40 | 165.10 | 2.9 | 4 | 3/8 | 1/4 |
| AC6201 | 22,000 | 0.50 | 6 | Direct Drive | Rear | 0.49 | 215.90 | 3.1 | 6 | 3/8 | 1/4 |
| AC6210 | 20,000 | 0.50 | 6 | Direct Drive | Rear | 1.13 | 342.90 | 3.1 | 6 | 3/8 | 1/4 |
| AC6255 | 20,000 | 0.50 | 6 | Spiral-Bevel | Rear | 0.49 | 177.80 | 2.5 | 6 | 3/8 | 1/4 |

AC6260 | COMPOSITE 1.0 HP STRAIGHT DIE GRINDER



- FULL 1.0 HP NON-STALL MOTOR;
- PATENTED QUIET TUNED EXHAUST (82 DBA);
- SUPERIOR STEEL GRADE INTERNAL BEARINGS FOR LONGER LIFE;
- FEATHER TRIGGER FOR BETTER SPEED CONTROL;
- ERGONOMICALLY DESIGNED HOUSING;
- MOST COMFORTABLE TRIGGER IN THE INDUSTRY;

AC6265 | 6MM ANGLED 1.0 HP COMPOSITE DIE GRINDER



- 1 HP NON STALL MOTOR
- 18,000 RPM
- PATENTED "SILENCING TECHNOLOGY" REDUCES NOISE TO 89 DBA
- LOW VIBRATION ONLY <2.5>M/SEC2
- COMPOSITE GRIP AND THROTTLE TRIGGER FOR COMFORT
- PRECISION BEVEL GEARS FOR RELIABILITY

AC6270 | 6MM EXTENDED STRAIGHT 1 HP COMPOSITE DIE GRINDER



- 1 HP NON STALL MOTOR
- 20,000 RPM
- PATENTED "SILENCING TECHNOLOGY" REDUCES NOISE TO 89 DBA
- LOW VIBRATION ONLY <2.5>M/SEC2
- COMPOSITE GRIP AND THROTTLE TRIGGER FOR COMFORT
- 6" EXTENSION TO REACH TIGHT AREAS

AC6275-A | 4" | COMPOSITE INSIDE CUT-OFF TOOL



- EXTENDED LENGTH FOR BETTER REACH. GET IN WHERE OTHER TOOLS FAIL TO GO!;
- COMPACT TAPERED GEAR HOUSING WITH CLOSE-COUPLED GRINDING WHEEL;
- REACHES INSIDE CORNERS OF AS LITTLE AS 30 DEGREES WITH 4" WHEEL;
- SUPERIOR STEEL GRADE INTERNAL GEARS FOR LONGER LIFE;
- NEW 1.0 HP MOTOR ELIMINATES "STALL" AND INCREASES RELIABILITY;
- NEW SPINDLE LOCK FOR EASE OF WHEEL CHANGE;
- NEW 11 POSITION ROTATIONAL GUARD;
- GRINDER DISC SIZES: 4" (1/16 X 3/8) (1/8 X 3/8);

SPECIFICATIONS

| Model No. | Free Speed (RPM) | Motor (HP) | Collet Size (mm) | Gears | Exhaust | Weight (kg) | Length (mm) | Vibration Levels M/Sec2 | Air Cons. (CFM) | Rec. Hose Size (in.) | Air Inlet (in.) BSP |
|-----------|------------------|------------|------------------|--------------|---------|-------------|-------------|-------------------------|-----------------|----------------------|---------------------|
| AC6260 | 22,000 | 1.0 | 6 | Direct Drive | Rear | 0.54 | 234.95 | 2.3 | 8 | 3/8 | 1/4 |
| AC6265 | 18,000 | 1 | 6 | Bevel Gears | Rear | 0.95 | 241.30 | 2.9 | 4.2 | 3/8 | 1/4 |
| AC6270 | 20,000 | 1 | 6 | Direct Drive | Rear | 1.18 | 359.41 | 2.9 | 4.2 | 3/8 | 1/4 |

| Model No. | Free Speed (RPM) | Motor (HP) | Wheel Size (in) | Gears | Cutting Capacity | Exhaust | Weight (kg) | Length (mm) | Vibration Levels M/Sec2 | Air Cons. (CFM) | Rec. Hose Size (in.) | Air Inlet (in.) BSP |
|-----------|------------------|------------|-----------------|--------------|------------------------------|---------|-------------|-------------|-------------------------|-----------------|----------------------|---------------------|
| AC6275-A | 14,000 | 1.0 | 5 | Spiral Bevel | 3/4" Rolled Steel / 18 Gauge | Rear | 1.70 | 393.70 | 3.8 | 6 | 3/8 | 1/4 |

AC6280 | .75 HP ANGLE DIE GRINDER WITH SPINDLE LOCK



- 18,000 RPM;
- .75 HP NON STALL MOTOR;
- SPINDLE LOCK FEATURE FOR EASY ACCESSORY CHANGE;
- SPEED CONTROL SWITCH LOCATED AT THE TOP OF THE GRIP FOR ADDED CONTROL;
- ERICKSON® STYLE PRECISION COLLET;
- COMPOSITE HANDLE AND GRIP FOR COMFORT;
- LOW NOISE ONLY 79 DBA;

AC6285 | .75 HP STRAIGHT DIE GRINDER WITH SPINDLE LOCK



- 20,000 RPM;
- .75 HP NON STALL MOTOR;
- SPINDLE LOCK FEATURE FOR EASY ACCESSORY CHANGE;
- SPEED CONTROL SWITCH LOCATED ON TOP OF THE GRIP FOR ADDED CONTROL;
- ERICKSON® STYLE PRECISION COLLET;
- OVER-MOLD COMPOSITE HANDLE AND GRIP FOR COMFORT;
- LOW NOISE ONLY 79 DBA;
- LOW VIBRATION ONLY 2.5 M/SEC2;

AC6290 | .75 HP REVERSIBLE STRAIGHT DIE GRINDER



- 20,000 RPM;
- .75 HP NON STALL MOTOR;
- SPEED CONTROL SWITCH LOCATED UNDER THE TRIGGER FOR ADDED CONTROL;
- FORWARD/REVERSE SWITCH LOCATED ON TOP OF THE GRIP FOR EASY DIRECTIONAL CHANGES;
- ERICKSON® STYLE PRECISION COLLET;
- OVER-MOLD COMPOSITE HANDLE AND GRIP FOR COMFORT;
- LOW NOISE ONLY 79 DBA;
- LOW VIBRATION ONLY 2.5 M/SEC2;

SPECIFICATIONS

| Model No. | Free Speed (RPM) | Motor (HP) | Collet Size (mm) | Gears | Exhaust | Weight (kg) | Length (mm) | Vibration Levels M/Sec2 | Air Cons. (CFM) | Rec. Hose Size (in.) | Air Inlet (in.) BSP |
|-----------|------------------|------------|------------------|--------------|---------|-------------|-------------|-------------------------|-----------------|----------------------|---------------------|
| AC6280 | 20,000 | 0.75 | 6 | Direct Drive | Rear | 0.82 | 117.8 | 2.5 | 4 | 3/8 | 1/4 |
| AC6285 | 22,000 | 0.75 | 6 | Direct Drive | Rear | 0.64 | 117.8 | 2.5 | 4 | 3/8 | 1/4 |
| AC 6290 | 22,000 | 0.75 | 6 | Direct Drive | Rear | 0.64 | 177.8 | 2.5 | 6 | 3/8 | 1/4 |

AC6295 | 115° ANGLE DIE GRINDER



- 0.6 HP MOTOR
- 18,000 RPM
- SPINDLE LOCK FEATURE FOR EASY ACCESSORY CHANGE
- ERGONOMIC COMPOSITE OVER MOLD GRIP PROVIDES COMFORT
- SPEED CONTROL SWITCH LOCATED AT THE TOP OF THE TOOL FOR ADDED CONTROL
- REAR EXHAUST

AC6340 | 4-1/2" ANGLED COMPOSITE GRINDER



- 11,000 RPM, 5/8"-11 SPINDLE
- NEW 1.0 HP MOTOR ELIMINATES "STALL" AND INCREASES RELIABILITY
- SPINDLE LOCK FOR EASE OF WHEEL CHANGE
- MULTI POSITIONAL ROTATIONAL GUARD IMPROVES ACCESS
- HI-LOW SPEED ADJUSTMENT CONTROL
- THE COMPOSITE GRIP AND THROTTLE TRIGGER HAVE BEEN ERGONOMICAL-
LY DESIGNED TO PROVIDE UNMATCHED COMFORT FOR THE USER
- ROTATIONAL MUFFLER MOUNTED AT REAR EXHAUST

AC6520 | 3" | COMPOSITE REVERSIBLE CUT-OFF TOOL



- ADJUSTING ROTATIONAL DIRECTION INCREASES CUTTING WHEEL LIFE AND AL-
LWS OPERATOR TO CHANGE THE DIRECTION OF SPARKS;
- REVERSE SWITCH LOCATED IN GRIP FOR EASY CHANGE OF DIRECTION;
- CUTS 3/8" ROLLED STEEL OR 18 GAUGE STEEL SHEET;
- SPEED REGULATOR LOCATED UNDER THROTTLE LEVER ADDS CONTROL;
- IMPACT RESISTANT, COMPOSITE HOUSING;
- EXTRA HEAVY DUTY DUAL SPINDLE BEARINGS FOR ADDED RELIABILITY;
- SPEED CONTROL SWITCH LOCATED ON TOP OF THE HOUSING FOR ADDED
CONTROL;

SPECIFICATIONS

| Model No. | Free Speed (RPM) | Motor (HP) | Wheel Size (in) | Gears | Cutting Capacity | Exhaust | Weight (kg) | Length (mm) | Vibration Levels M/ Sec2 | Air Cons. (CFM) | Rec. Hose Size (in.) | Air Inlet (in.) BSP |
|-----------|------------------|------------|-----------------|---------------|--------------------------------|---------|-------------|-------------|--------------------------|-----------------|----------------------|---------------------|
| AC6295 | 18,000 | 0.6 | 5 | Bevel | 3/4" Rolled Steel / 18 Gauge | Rear | 0.75 | 198.00 | 12.7 | 6 | 3/8 | 1/4 |
| AC6340 | 20,000 | 1 | 3 | Spindle Drive | 4-1/2" Rolled Steel / 18 Gauge | Rear | 1.09 | 222.25 | 1.8 | 6 | 3/8 | 1/4 |
| AC6520 | 18,000 | 0.50 | 3 | Direct Drive | 3/4" Rolled Steel / 18 Gauge | Rear | 0.72 | 177.80 | 1.8 | 4 | 3/8 | 1/4 |

AC6530 | FLEX HEAD CUT OFF TOOL



- 18,000 RPM FREE SPEED
- 0.5 HP MOTOR
- 3 POSITION FLEX HEAD
- CUTS 3/8" ROLLED STEEL OR 18 GAUGE STEEL SHEET
- 360° ROTATIONAL GUARD AND EXHAUST
- PATENTED MUFFLER DESIGN REDUCES NOISE LEVEL TO 90 DBA



3 Position Flex Head

AC6560 | 4" 1 HP COMPOSITE CUT OFF TOOL



- 1 HP NON STALL MOTOR
- 1400 RPM
- SINGLE REDUCTION GEAR INCREASES TORQUE AND STALL RESISTANCE
- COMPOSITE HANDLE AND GRIP FOR COMFORT
- LOW NOISE ONLY 89 DBA
- LOW VIBRATION ONLY <2.5>M/SEC2

SPECIFICATIONS

| Model No. | Free Speed (RPM) | Motor (HP) | Wheel Size (in) | Gears | Cutting Capacity | Exhaust | Weight (kg) | Length (mm) | Vibration Levels M/ Sec2 | Air Cons. (CFM) | Rec. Hose Size (in.) | Air Inlet (in.) BSP |
|-----------|------------------|------------|-----------------|------------------|------------------------------|---------|-------------|-------------|--------------------------|-----------------|----------------------|---------------------|
| AC6530 | 18,000 | 0.5 | 3 | Direct Drive | 3/4" Rolled Steel / 18 Gauge | Rear | 2.6 | 8.8 | 1.9 | 6 | 3/8 | 1/4 |
| AC6560 | 14,000 | 1 | 4 | Single Reduction | 3/4" Rolled Steel / 18 Gauge | Rear | 1 | 241.30 | 1.8 | 4.2 | 3/8 | 1/4 |

GRINDERS / CUT-OFF TOOLS ACCESSORIES



BELTS



BRISTLE DISCS



SANDING DISCS



BACKING PADS



SURFACE CONDITIONING DISCS

SANDING DISC (1-1/2")

| PART NUMBER | DESCRIPTION |
|-------------------|-------------------------------------|
| 131403-120 | 120 Sanding Disc (1-1/2") pkt of 10 |
| 131403-320 | 320 Sanding Disc (1-1/2") pkt of 10 |
| 131403-600 | 600 Sanding Disc (1-1/2") pkt of 10 |
| 13132-600 | 600 Sanding Disc (1-1/4") pkt of 10 |

SANDING DISC (1-1/4")

| PART NUMBER | DESCRIPTION |
|-------------------|-------------------------------------|
| 131403-120 | 120 Sanding Disc (1-1/4") pkt of 10 |
| 131403-180 | 180 Sanding Disc (1-1/4") pkt of 10 |
| 131403-320 | 320 Sanding Disc (1-1/4") pkt of 10 |
| 13132-600 | 600 Sanding Disc (1-1/4") pkt of 10 |

GRIT SAND DISC

| PART NUMBER | DESCRIPTION |
|-------------------|-------------------------|
| HO-P120 | 120 Grit Sand Disc 2" |
| HO-P24 | 24 Grit Sand Disc 2" |
| HO-P24 - 3 | 24-3 Grit Sand Disc 2" |
| HO-P36 | 36 Grit Sand Disc 2" |
| HO-P60 | 60 Grit Sand Disc 2" |
| HO-P80 | 80 Grit Sand Disc 2" |
| HO-P80-3 | 80-3 Grit Sand Disc 2" |
| HO-P120-3 | 120-3 Grit Sand Disc 2" |

BELT SANDERS

| PART NUMBER | DESCRIPTION |
|-------------------------|----------------------------------------------------------------|
| 8704 +GRIT | 30mm Sander belts - Grit size 40, 50, 60, 80, 100, 120 and 150 |
| 8764, 5764 +GRIT | 10mm Sander belts - Grit size 40, 50, 60, 80, 100, 120 and 150 |
| 8765, 5765 +GRIT | 20mm Sander belts - Grit size 40, 50, 60, 80, 100, 120 and 150 |
| 5765 +GRIT | 60mm Sander belts - Grit size 40, 60, 80, 100, 120 and 150 |

SISAL/SURF

| | |
|--------------|-------------------------------|
| H0107 | Sisal Polish Mop |
| H0SCF | 2" Blue Surf. Cond. Disc Fine |

OTHER COLLETS

| | |
|-----------------|-------------|
| RL80528G | 8mm Collet |
| 732227 | 6mm Collet |
| 732224 | 3mm Collet |
| 92232 | 1/8" Collet |
| 92253 | 1/4" Collet |



ERICKSON COLLETS

| | |
|-----------------|----------------------|
| 5725-15D | 8mm Erickson Collet |
| 5725-15 | 6mm Erickson Collet |
| 5725-15C | 3mm Erickson Collet |
| 5725-15A | 1/4" Erickson Collet |



WOOL POLISHING

| | |
|-----------------|--------------------------|
| 131210-1 | 2" Wool Polishing Bonnet |
| H0067 | 7" Lambs Wool Bonnet |
| H0068 | 8" Lambs Wool Bonnet |



CUTTING DISCS

| | |
|--------------------|-----------------|
| 5L-3011B39N | 4" CUTTING DISC |
| H0069N | 3" CUTTING DISC |



GRIT ROLOC

| | |
|--------------|-----------------------------------|
| 20004 | 50 Grit Roloc Bristle Disc Green |
| 20005 | 80 Grit Roloc Bristle Disc Yellow |
| 20006 | 120 Grit Roloc Bristle Disc White |

DUST COLLECTOR / HOLDER

| | |
|-----------------|----------------------------|
| PT201 | Dust Collector |
| 0308C025 | 2" Disc Holder/Backing Pad |

SCRAPING BLADE

| | |
|--------------|---------------------|
| 13122 | Scraping Blade 35mm |
| 13123 | Scraping Blade 45mm |

DRILLS

AIRCAT® drills feature precision, fully caged planetary gears, and trigger mounted reverse switches for instant change of direction. The AIRCAT® ergonomic grip designs provide perfect balance and added operator comfort.



AC4337 | 3/8" | ANGLE DRILL - CHUCK & KEY



- 0.75 HP MOTOR ;
- PRECISION SPIRAL BEVEL GEARS INCREASE RELIABILITY;
- CONVENIENTLY POSITIONED FORWARD/REVERSE KNOB;
- BUILT-IN SPEED REGULATOR FOR ADDED CONTROL;
- ERGONOMICALLY DESIGNED COMPOSITE OVER-MOLD GRIP AND THROTTLE LEVER PROVIDE UNMATCHED COMFORT FOR THE USER;
- FITTED WITH GREASE NIPPLE FOR GEAR LUBRICATION;
- INTERNAL SILENCING REDUCES NOISE LEVEL TO 75 DBA;
- REAR EXHAUST DIRECTS AIR AWAY FROM WORK AREA;
- FITTED WITH KEYED CHUCK;

AC4338 | 3/8" | CHUCK & KEY OR KEYLESS CHUCK OPTION.



- 3/8" REVERSIBLE COMPOSITE DRILL;
- JACOBS® CHUCK (KEYLESS);
- FEATHER TRIGGER FOR BETTER SPEED CONTROL;
- TRIGGER MOUNTED REVERSE FOR INSTANT CHANGE OF DIRECTION;
- 1,800 RPM;
- SUPERIOR GRADE STEEL PLANETARY GEAR FOR LONGER LIFE;
- PATENTED QUIET TUNED EXHAUST (85 DBA);
- PATENTED ERGONOMICALLY DESIGNED HANDLE;
- AIR FLOW PRESSURE: 90 PSI;

SPECIFICATIONS

| Model No. | Free Speed (RPM) | Motor (HP) | Chuck Size (in.) | Gears | Spindle Thread Size (in.) | Weight (kg) | Length (mm) | Vibration Levels M/ Sec2 | Air Cons. (CFM) | Rec. Hose Size (in.) | Air Inlet (in.) BSP |
|-----------|------------------|------------|------------------|--------------|---------------------------|-------------|-------------|--------------------------|-----------------|----------------------|---------------------|
| AC4337 | 1,600 | 0.75 | 3/8 | Spiral Bevel | 1.08 | 210.82 | 2.1 | 6 | 3/8 | 1/4 | 1/4 |
| AC4338 | 1,800 | 0.70 | 3/8 | Planetary | 3/8 x 24 | 1.13 | 177.80 | 1.7 | 6 | 3/8 | 1/4 |

AC4450 | 1/2" | COMPOSITE DRILL - CHUCK & KEY OR KEYLESS CHUCK OPTION



- 1/2" REVERSIBLE COMPOSITE DRILL;
- KEYED CHUCK;
- FEATHER TRIGGER FOR BETTER SPEED CONTROL;
- TRIGGER MOUNTED REVERSE FOR INSTANT CHANGE OF DIRECTION;
- SUPERIOR GRADE STEEL PLANETARY GEAR FOR LONGER LIFE
- 400 RPM;
- PATENTED QUIET TUNED EXHAUST (85 DBA);
- PATENTED ERGONOMICALLY DESIGNED HANDLE;
- AIR FLOW PRESSURE: 90 PSI;

AC4451 | 1/2" | COMPOSITE DRILL - CHUCK & KEY OR KEYLESS CHUCK OPTION.



- 0.70 HP MOTOR;
- LOW WEIGHT COMPOSITE HOUSING REDUCES WEIGHT.;
- PATENTED ONE-CLICK REVERSE BUTTON PROVIDES INSTANT CHANGE OF DIRECTION;
- PATENTED "SILENCING TECHNOLOGY" REDUCES THE NOISE LEVEL TO 83 DBA;
- PATENTED GRIP HAS BEEN ERGONOMICALLY DESIGNED TO PERFECTLY FIT THE HAND-PROVIDING UNMATCHED COMFORT FOR THE USER;
- FORWARD POSITION HANDLE ALLOWS OPERATOR TO APPLY INCREASED FEED FORCE;
- FORWARD POSITION HANDLE ALLOWS MORE CONTROL TO START HOLE, AND MORE CONTROL TO MAINTAIN THE DRILLED HOLE AXIS;

SPECIFICATIONS

| Model No. | Free Speed (BPM) | Motor (HP) | Chuck Size (in) | Gears | Weight (kg) | Length (mm) | Vibration Levels M/Sec ² | Air Cons. (CFM) | Rec. Hose Size (in.) | Air Inlet (in.) BSP |
|-----------|------------------|------------|-----------------|-----------------|-------------|-------------|-------------------------------------|-----------------|----------------------|---------------------|
| AC4450 | 400 | 0.70 | 1/2 | Planetary | 1.36 | 203.25 | 1.0 | 6 | 3/8 | 1/4 |
| AC4451 | 400 | 0.70 | 1/2 | Caged Planetary | 1.86 | 235.45 | 2.5 | 9 | 3/8 | 1/4 |



3/8" CHUCK & KEY



3/8" KEYLESS



1/2" CHUCK & KEY



1/2" KEYLESS

DRILL CHUCKS 3/8"

| PART NUMBER | DRILL CHUCKS |
|---------------|--------------------|
| H0019 | 3/8" Chuck & Key |
| H0019K | 3/8" Keyless Chuck |
| H0023 | 3/8" Chuck Key |

DRILL CHUCKS 1/2"

| PART NUMBER | DRILL CHUCKS |
|---------------|--------------------|
| H0020 | 1/2" Chuck & Key |
| H0020K | 1/2" Keyless Chuck |
| H0024 | 1/2" Chuck Key |

DRILL CHUCKS 5/8"

| PART NUMBER | DRILL CHUCKS |
|--------------|-------------------------------------|
| H0122 | 5/8" Tapered Chuck & Key for HP17RD |

DRILL CHUCKS 1/4"

| PART NUMBER | DRILL CHUCKS |
|--------------|---------------------------------|
| 99005 | 1/4" Screwdriver Hex Slip Shank |

HAMMERS

AIRCAT® hammers feature a multi-patented silencing system and internal vibration damping that reduce vibration levels to 4.2 m/sec². The AIRCAT® ergonomic grip featured in the hammers provide perfect balance and added operator comfort.



AC5100-A-T | .401 SHANK COMPOSITE MEDIUM STROKE AIR HAMMER



- 3,000 BLOWS PER MINUTE FOR FAST CUTTING ACTION;
- HIGH PERFORMANCE AND LOW WEIGHT;
- MULTI-PATENTED MUFFLER/EXHAUST SYSTEM GIVES THIS TOOL AND EXTREMELY LOW NOISE OF 88 DBA AND VIBRATION LEVEL OF 4.2 M/ SEC²;
- HIGH QUALITY SAFETY-LOCK RETAINER FOR EASE OF CHISEL CHANGE AND ADDED SAFETY;
- MODEL 5100-A INCLUDES: BLOW MOLD KIT, 5 PC. CHISEL SET AND QUICK CHANGE RETAINER;

AC5100-A | .401 SHANK COMPOSITE MEDIUM STROKE AIR HAMMER KIT



- 3,000 BLOWS PER MINUTE FOR FAST CUTTING ACTION;
- HIGH PERFORMANCE AND LOW WEIGHT;
- MULTI-PATENTED MUFFLER/EXHAUST SYSTEM GIVES THIS TOOL AND EXTREMELY LOW NOISE OF 88 DBA AND VIBRATION LEVEL OF 4.2 M/ SEC²;
- HIGH QUALITY SAFETY-LOCK RETAINER FOR EASE OF CHISEL CHANGE AND ADDED SAFETY;
- MODEL 5100-A INCLUDES: BLOW MOLD KIT, 5 PC. CHISEL SET AND QUICK CHANGE RETAINER;

SPECIFICATIONS

| Model No. | Free Speed (BPM) | Pistol Stroke | Shank Opening | Retainer | Valve | Weight (kg) | Length (mm) | Vibration Levels M/ Sec2 | Air Cons. (CFM) | Rec. Hose Size (in.) | Air Inlet (in.) BSP |
|------------|------------------|---------------|---------------|-------------|-------|-------------|-------------|--------------------------|-----------------|----------------------|---------------------|
| AC5100-A-T | 3,000 | 2-5/8 | .401" | Safety-lock | Plate | 1.49 | 193.04 | 4.2 | 6 | 3/8 | 1/4 |
| AC5100-A | 3,000 | 2-5/8 | .401" | Safety-lock | Plate | 1.49 | 193.04 | 4.2 | 6 | 3/8 | 1/4 |

AC5200-A-T | .401 SHANK COMPOSITE LONG STROKE AIR HAMMER



- 2100 BLOWS/MINUTE PROVIDE HARD HITTING CUTTING ACTION
- 3-3/4" PISTON STROKE
- VIBRATION DAMPED TECHNOLOGY REDUCES THE VIBRATION LEVEL TO 4.2 M/SEC²
- PATENTED AIRCAT DESIGN DOUBLE INJECTION COMPOSITE GRIP HAS BEEN ERGONOMICALLY DESIGNED TO PROVIDE UNMATCHED COMFORT FOR THE USER
- PATENTED AIRCAT SILENCING TECHNOLOGY
- HEAVY DUTY BALL-LOCK QUICK CHANGE CHISEL RETAINER ADDS SAFETY AND RELIABILITY
- MODEL AC5200-A INCLUDES: 4 PC. CHISEL SET / 902 | 907 | 909 | 910

AC5200-A | .401 SHANK COMPOSITE LONG STROKE AIR HAMMER KIT



- 2100 BLOWS/MINUTE PROVIDE HARD HITTING CUTTING ACTION
- 3-3/4" PISTON STROKE
- VIBRATION DAMPED TECHNOLOGY REDUCES THE VIBRATION LEVEL TO 4.2 M/SEC²
- PATENTED AIRCAT DESIGN DOUBLE INJECTION COMPOSITE GRIP HAS BEEN ERGONOMICALLY DESIGNED TO PROVIDE UNMATCHED COMFORT FOR THE USER
- PATENTED AIRCAT SILENCING TECHNOLOGY
- HEAVY DUTY BALL-LOCK QUICK CHANGE CHISEL RETAINER ADDS SAFETY AND RELIABILITY
- MODEL AC5200-A INCLUDES: 4 PC. CHISEL SET / 902 | 907 | 909 | 910

SPECIFICATIONS

| Model No. | Free Speed (BPM) | Pistol Stroke | Shank Opening | Retainer | Valve | Weight (kg) | Length (mm) | Vibration Levels M/Sec2 | Air Cons. (CFM) | Rec. Hose Size (in.) | Air Inlet (in.) BSP |
|------------|------------------|---------------|---------------|-------------|-------|-------------|-------------|-------------------------|-----------------|----------------------|---------------------|
| AC5200-A-T | 2,100 | 3-3/4 | .401" | Safety-lock | Plate | 1.99 | 279.40 | 4.2 | 6 | 3/8 | 1/4 |
| AC5200-A | 2,100 | 3-3/4 | .401" | Safety-lock | Plate | 1.99 | 279.40 | 4.2 | 6 | 3/8 | 1/4 |

AC5250 | 0.401" SUPER DUTY AIR HAMMER

- 2,500 BPM
- 3" Piston stroke
- Includes Quick change chisel retainer
- Variable speed trigger
- 4 position built-in air regulator



SPECIFICATIONS

| Model No. | Free Speed (RPM) | Motor (HP) | Cutting Capacity | Exhaust | Weight (kg) | Length (mm) | Vibration Levels M/ Sec2 | Air Cons. (CFM) | Rec. Hose Size (in.) | Air Inlet (in.) BSP |
|-----------|------------------|------------|------------------|---------|-------------|-------------|--------------------------|-----------------|----------------------|---------------------|
| AC5250A-T | 2,500 | 0.40 | 3" Piston stroke | Rear | 2.44 | 241,30 | 7.7 | 4.2 | 3/8 | 1/4 |

AC5300-A-T | SUPER DUTY 0.498" SHANK AIR HAMMER



- 0.498" SHANK OPENING
- 1760 BLOWS / MINUTE
- HEAVY DUTY "QUICK CHANGE CHISEL RETAINER" PREVENTS CHISELS BY-PASSING CONVENTIONAL SPRING RETAINERS
- PATENTED AIRCAT ERGONOMICALLY DESIGNED GRIP PROVIDES UNMATCHED COMFORT FOR THE USER
- DESIGNED FOR ULTRA HEAVY DUTY AND FOR DRIVING OUT SHACKLE AND KINGPINS AND CUTTING LARGE BOLTS, NUTS AND FASTENERS
- MODEL AC5300-A INCLUDES: 4 PC. CHISEL SET / 902 | 907 | 909 | 910

AC5300-A | SUPER DUTY 0.498" SHANK AIR HAMMER KIT



- 0.498" SHANK OPENING
- 1760 BLOWS / MINUTE
- HEAVY DUTY "QUICK CHANGE CHISEL RETAINER" PREVENTS CHISELS BY-PASSING CONVENTIONAL SPRING RETAINERS
- PATENTED AIRCAT ERGONOMICALLY DESIGNED GRIP PROVIDES UNMATCHED COMFORT FOR THE USER
- DESIGNED FOR ULTRA HEAVY DUTY AND FOR DRIVING OUT SHACKLE AND KINGPINS AND CUTTING LARGE BOLTS, NUTS AND FASTENERS
- MODEL AC5300-A INCLUDES: 4 PC. CHISEL SET / 902 | 907 | 909 | 910

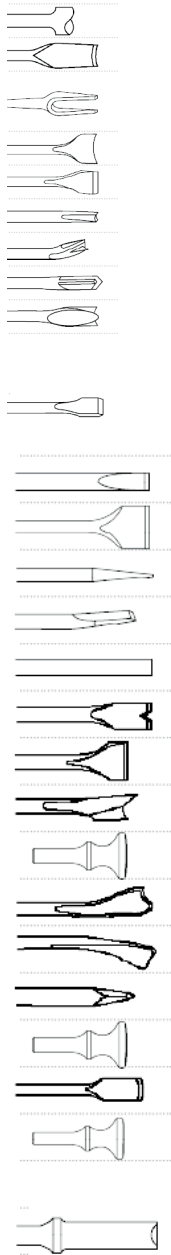
SPECIFICATIONS

| Model No. | Free Speed (BPM) | Pistol Stroke | Shank Opening | Retainer | Valve | Weight (kg) | Length (mm) | Vibration Levels M/ Sec2 | Air Cons. (CFM) | Rec. Hose Size (in.) | Air Inlet (in.) BSP |
|------------|------------------|---------------|---------------|--------------|-------|-------------|-------------|--------------------------|-----------------|----------------------|---------------------|
| AC5300-A-T | 1,760 | 2-11/16 | .498" | Quick Change | Plate | 2.08 | 227.07 | 17.4 | 6 | 3/8 | 1/4 |
| AC5300-A | 1,760 | 2-11/16 | .498" | Quick Change | Plate | 2.08 | 227.07 | 17.4 | 6 | 3/8 | 1/4 |

HAMMERS ACCESSORIES

0.401" ROUND SHANK

| PART NO | ROUND SHANK |
|-----------------|--------------------------------------------|
| 901 | 0.401" Shank Tie Rod Tool |
| 902 | Weld Splitter |
| 903-3/4 | Fork Chisel 3/4" |
| 904 | Bushing Remover |
| 905 | Wide Scraper |
| 906 | Bushing Splitter |
| 907 | Claw Ripper |
| 908 | Muffler Cutter |
| 909 | Panel Cutter |
| 910 | Flat Chisel 7x3/4 |
| 910-1/2 | Flat Chisel 7x1/2 |
| 910-11/2 | Flat Chisel 7x1 1/2" |
| 910-11 | Flat Chisel 11x3/4 |
| 910-18 | Flat Chisel 18x3/4 |
| 911 | Tapered Punch |
| 912 | Rivet Cutter |
| 913 | Blank |
| 914 | Vee Chisel |
| H0096 | 1" Smoothing Hammer |
| H0097 | 1 3/4" Smoothing Hammer |
| 922 | Spoon Chisel |
| 923 | Single Edge Cutter |
| 933 | Muffler Cutter (inside) |
| 934 | Muffler Cutter (outside) |
| 940 | Moil Point |
| 951 | Five Chisel Pack (902, 907, 910, 909, 912) |
| H0085 | 3/16" Round Rivet Snap |
| 1604 | 1/4" Round Rivet Snap |
| 1605 | 5/16" Round Rivet Snap |
| 1606 | 5/16" Round Rivet Snap |



0.498" ROUND SHANK

| PART NO | ROUND SHANK |
|---------------|---------------------|
| 965 | Shank Tie Rod Tool |
| 968 | Fork Chisel 1 1/4 |
| 955 | Wide Scraper |
| 964 | Bushing Splitter |
| 959 | Panel Cutter |
| 960 | Flat Chisel 7x3/4 |
| 960-18 | Flat Chisel 18x3/4 |
| 961 | Tapered Punch |
| 962 | Rivet Cutter |
| 963 | Blank |
| H0098 | 1" Smoothing Hammer |

0.401" NON TURN SHANK

| PART NO | NO TURN SHANK |
|----------------|--------------------|
| 3114 | Weld Splitter |
| 3106 | Wide Scraper |
| 3105 | Claw Ripper |
| 3109 | Panel Cutter |
| 3102 | Flat Chisel 7x3/4 |
| 3102-12 | Flat Chisel 11x3/4 |
| 3102-18 | Flat Chisel 18x3/4 |
| 3110 | Tapered Punch |
| 3103 | Rivet Cutter |
| 3101 | Blank |
| 3112 | Spoon Chisel |
| 3104 | Spoon Chisel |

WELD CHIPPER CHISELS - 1/2"

| | |
|------------|------------------------|
| 395 | Blank Chisel 7" Long |
| 396 | 3/4" Flat Chisel 7" OA |
| 397 | Wide Chisel |
| 398 | Angle Chisel |
| 399 | Scraper |

| | |
|-------------|-----------------------|
| 3224 | Diamond Chisel |
| 3225 | Round Nose Chisel |
| 3226 | Cape Chisel Weld Flux |
| 3201 | Panel Cutter |

| HEAVY HAMMER CHISEL | ROUND SHK 0.680 | HEX SHK 0.580 |
|-----------------------------------|--------------------|------------------|
| BLANK CHISEL 8" LONG | 301 | 302 |
| FLAT CHISEL 1"X 9" LONG | 303 | 304 |
| MOIL POINT 9" LONG | 313 | 314 |
| WIDE FLAT 1 1/2" X 9" LONG | 325 | 326 |
| WIDE FLAT 2" X 9" LONG | 323 | 324 |
| CAPE CHISEL 9" LONG | 305 | 306 |
| ROUND NOSE CHISEL 9" LONG | 307 | 308 |
| DIAMOND CHISEL 9" LONG | 309 | 310 |
| GOUGE CHISEL 9" LONG | 337 | 338 |

CHISEL RETAINERS

| | |
|---------------|------------------------------------------|
| 300 | Heavy Hammer Lockring (.580 Hex) UT8644H |
| 512 | Std. Spring Retainer (.401") |
| 512-10 | Std. Spring Retainer (.401") Pack of 10 |
| 513 | Std. Spring Retainer (.498") |
| 895 | Beehive Spring (.401") |
| 898 | Beehive Spring (.498") |
| H0035 | Safety Chuck Chisel Holder (.401") |
| H0045B | Std. Non-Turn Retainer(.401") |

AIR SAW, NIBBLER AND NEEDLE SCALER

AIRCAT®'s latest designs and innovations add reliability and reduced noise levels and weight, while providing added operator comfort.



AC6330 | NIBBLER



- 2,600 SPM MOTOR PROVIDES FAST CUTTING ACTION IN STEEL UP TO 18 GAUGE;
- THE 6330 HAS THE SMALLEST CUT RADIUS OF ANY NIBBLER AT ONLY 7.62 CM ALLOWING CLEAN CUTS IN TIGHT CORNERS;
- THE "OVER SIZED" ANVIL AND PUNCH DRAMATICALLY INCREASES THE RELIABILITY OF THESE HIGH WEAR PARTS;
- INCLUDES AN ADDITIONAL PUNCH;
- COMPOSITE HANDLE AND THROTTLE LEVER DESIGN PROVIDE COMFORTABLE AND CONVENIENT OPERATION;

AC6350 | LOW VIBRATION AIR SAW



- 9,500 STROKE/MINUTE MOTOR PROVIDES FAST CUTTING ACTION;
- .375 STROKE LENGTH;
- THE INTERNAL DAMPING SYSTEM REDUCES THE VIBRATION LEVEL TO 2.5M/ SEC2;
- COMES COMPLETE WITH 18, 24 AND 32 TEETH POWER SAW BLADES;
- THE METAL BLADE RETAINER INCREASES RELIABILITY;
- THE ROTATIONAL 360° REAR EXHAUST MUFFLER ALLOWS EXHAUST AIR TO BE DIRECTED AS PREFERRED;
- FEATURES A SHORT OVERALL LENGTH OF ONLY 8" AND LOW A WEIGHT OF ONLY 1.13 LBS. PROVIDING GOOD WORK AREA ACCESS AND COMFORTABLE OPERATION;

AC6355 | RECIPROCATING AIR SAW



- 5,000 SPM;
- DUAL-SPEED DESIGN FOR CONTROL;
- QUICK CHANGE BLADE DESIGN RETAINER FOR QUICK AND EASY BLADE CHANGES;
- ACCEPTS VARIOUS TYPES OF RECIPROCATING SAW BLADES;
- PATENTED RECIPROCATING CRANK MECHANISM MOTOR;
- CAPABLE OF CUTTING 2.54 CM THICK STEEL AND STEEL PIPE UP TO 7.62CM
- REAR EXHAUST;

AC6390 | COMPACT NEEDLE SCALER



- 4,800 BPM;
- 1-1/4" STROKE;
- LOW WEIGHT COMPACT DESIGN;
- DURABLE STEEL HOUSING;
- BEST FOR REMOVAL OF RUST, PAINT AND SCALE ON FLAT OR IRREGULAR SURFACES;

SPECIFICATIONS

| Model No. | Free Speed (RPM) | Motor (HP) | Cutting Capacity | Exhaust | Weight (kg) | Length (mm) | Vibration Levels M/ Sec2 | Air Cons. (CFM) | Rec. Hose Size (in.) | Air Inlet (in.) BSP |
|-----------|------------------|------------|------------------------------------------|---------|-------------|-------------|--------------------------|-----------------|----------------------|---------------------|
| AC6330 | 2600 | 0.50 | 18 Gauge | Rear | 1.02 | 292.1 | 7.7 | 4 | 3/8 | 1/4 |
| AC6350 | 9500 | 0.50 | 3/16" Steel Plate - 18 Gauge | Rear | 0.51 | 203.20 | 7.7 | 4 | 3/8 | 1/4 |
| AC6355 | 5000 | 0.45 | 1/4" thick steel and steel pipe up to 3" | Rear | 1.10 | 309.88 | 7.7 | 3.5 | 3/8 | 1/4 |
| AC6390 | 4800 (BPM) | - | | Rear | 1.31 | 292.1 | - | 4 | 3/8 | 1/4 |

NIBBLERS

| PART NUMBER | NIBBLERS |
|-------------|--------------------------------|
| RL136538 | Nibbler Punch for AC6330 |
| RL136541 | Nibbler Die (Anvil) for AC6330 |

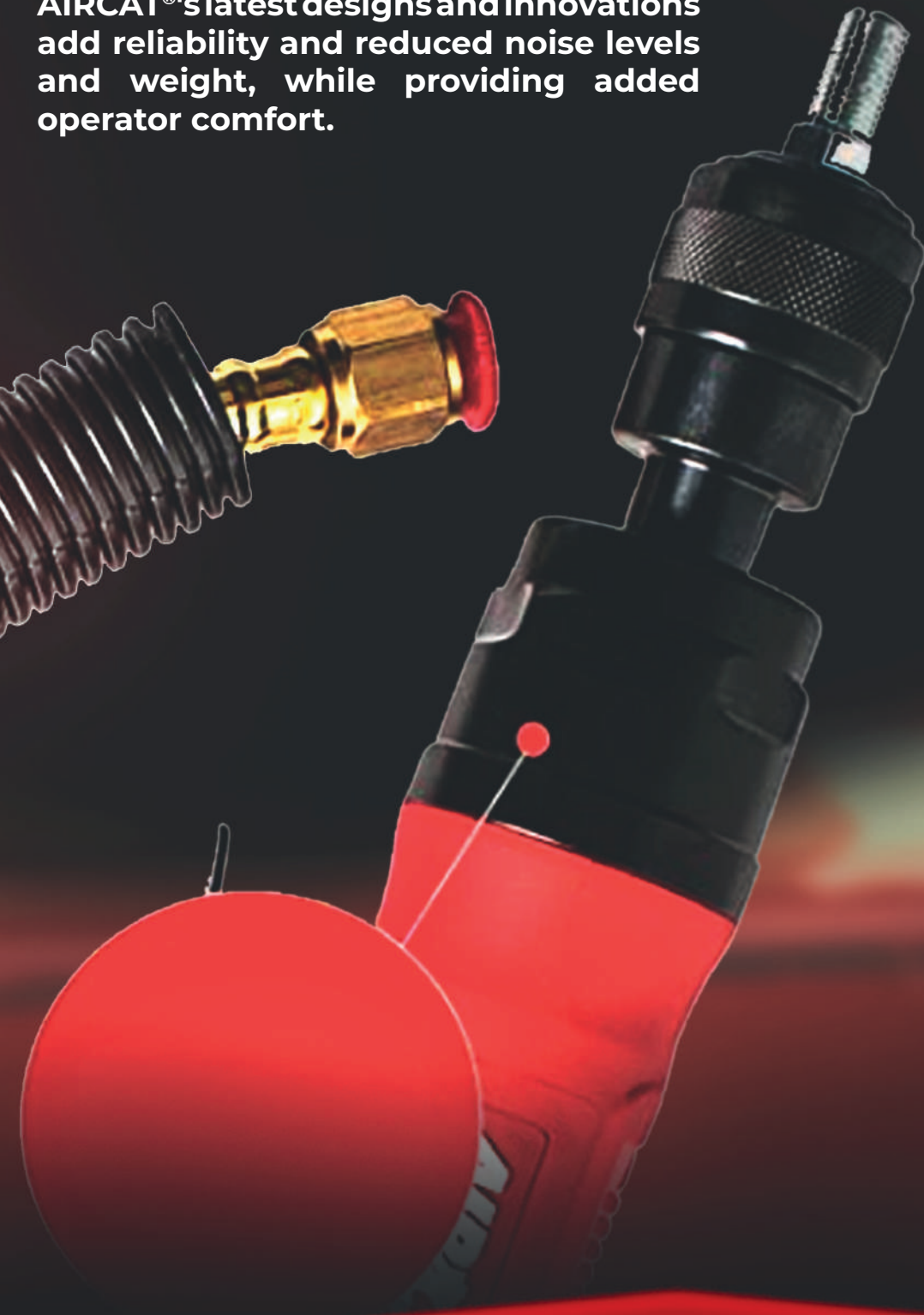
SAW BLADES

| PART NUMBER | SAW BLADES |
|-------------|-----------------------------|
| H0403-18 | High Speed Saw Blade18 TPI |
| H0403-24 | High Speed Saw Blad 24 TPI |
| H0403-32 | High Speed Saw Blade 32 TPI |



TIRE BUFFERS

AIRCAT®'s latest designs and innovations add reliability and reduced noise levels and weight, while providing added operator comfort.



AC6400 | COMPOSITE HIGH SPEED TIRE BUFFER / DRILL



- 22,000 RPM
- STALL RESISTANT 0.75 HP MOTOR
- BUILT-IN REGULATOR FOR ADDED CONTROL ON THE JOB
- CONVENIENT AND COMFORTABLE THROTTLE LEVER DESIGN
- ERGONOMIC MOLDED HANDLE GRIP ADDS COMFORT AND INSULATION IN COLD WEATHER
- COMPLETE WITH COAXIAL REAR HOSE ASSEMBLY TO ELIMINATE BLOWING OF RUBBER PARTICLES/DUST IN THE WORK AREA
- SHORT OVERALL TOOL LENGTH OF ONLY 8" IMPROVES ACCESS IN WORK AREA
- LOW NOISE LEVEL
- LOW AIR CONSUMPTION
- 3/8" PRECISION KEYED CHUCK

AC6402 | .6 HP | 2,600 RPM | COMPOSITE TIRE BUFFER



- 2,600 RPM
- STALL RESISTANT 0.60 HP MOTOR
- CONVENIENT AND COMFORTABLE THROTTLE LEVER DESIGN
- ERGONOMIC MOLDED HANDLE GRIP ADDS COMFORT AND INSULATION IN COLD WEATHER
- COMPLETE WITH COAXIAL REAR HOSE ASSEMBLY TO ELIMINATE BLOWING OF RUBBER PARTICLES/DUST IN THE WORK AREA
- LOW NOISE LEVEL
- LOW AIR CONSUMPTION
- 5/16" HEX QUICK CHANGE CHUCK WITH THREADED ARBOR FOR MOUNTING BUFFING CONES AND ACCESSORIES

AC6403 | .6 HP | 3,600 RPM | COMPOSITE TIRE BUFFER



- 3,600 RPM
- STALL RESISTANT 0.60 HP MOTOR
- CONVENIENT AND COMFORTABLE THROTTLE LEVER DESIGN
- ERGONOMIC MOLDED HANDLE GRIP ADDS COMFORT AND INSULATION IN COLD WEATHER
- COMPLETE WITH COAXIAL REAR HOSE ASSEMBLY TO ELIMINATE BLOWING OF RUBBER PARTICLES/DUST IN THE WORK AREA
- LOW NOISE LEVEL
- LOW AIR CONSUMPTION
- 5/16" HEX QUICK CHANGE CHUCK WITH THREADED ARBOR FOR MOUNTING BUFFING CONES AND ACCESSORIES
- MODEL 6403 IS DESIGNED FOR TIRE RE-CAPPING AND TIRE BUFFING

SPECIFICATIONS

| Model No. | Free Speed (RPM) | Motor (HP) | Chuck Size | Spindle Thread Size (in) | Weight (kg) | Length (mm) | Air Cons. (CFM) | Rec. Hose Size (in.) | Air Inlet (in.) BSP |
|-----------|------------------|------------|--------------------|--------------------------|-------------|-------------|-----------------|----------------------|---------------------|
| AC6400 | 22000 | 0.75 | 3/8 | 3/8 X 24 | 0.75 | 203.20 | 4 | 3/8 | 1/4 |
| AC6402 | 2600 | 0.60 | 5/16" Internal Hex | 3/8 X 24 | 0.79 | 228.6 | 3.5 | 3/8 | 1/4 |
| AC6403 | 3600 | 0.50 | 5/16" Internal Hex | 3/8 X 24 | 0.79 | 228.6 | 4 | 3/8 | 1/4 |



SANDERS & POLISHERS

AIRCAT® sanders feature a patented motor design that reduces vibration to 1.8 m/sec². These motors are double sealed to eliminate any dust contamination of internal parts. AIRCAT® sanders are the first sanders with technology that allows the tools to be used lubrication free, eliminating any oil mist contamination of the work surface.

To further extend the life and reliability of the tools they also incorporate a double bearing design. AIRCAT® sanders are built using the latest technology composite grips and handles proving lower weight and added comfort for the operator.

The selection of AIRCAT® sanders are designed to meet the latest market requirements for ultra fine paint finishing and spot repair work.

AC6700 SERIES LOW VIBRATION "LUBE FREE" ORBITAL AND GEARED SANDERS



AC6700-8GCV



AC6700-6GCV



AC6700-5-336
AC6700-6-336



AC6700-5-336CV
AC6700-6-336CV



AC6700-1-332



AC6700-3-332
AC6700-3-332CV



AC6700-6-332
AC6700-6-332CV



AC6700-JBS-332

AC6700 SERIES LOW VIBRATION "LUBE FREE" ORBITAL AND GEARED SANDERS

AIRCAT® has developed a series of "lubrication free" sanders that incorporate the latest engineering concepts, advanced materials and patented designs. AIRCAT® technology reduces weight, noise & vibration, while extending the tool life. The AIRCAT® "smooth design throttle lever" and "ergonomic grip" featured in our orbital sanders provide unmatched operating comfort.

- A choice of fifteen models 2.38mm and 4.76mm orbit options
- Non vacuum, central vacuum and self vacuum options
- 1", 3", 5" 6", and 8" "hook & loop" pad options
- Only 1.6 CFM average air consumption and 6.2 CFM continuous running under load
- Advanced silencing technology reduces noise levels to 75-78 dBA
- Patented double sealed, lubrication free motor prevents dust contamination of the air motor and eliminates the need for oiling
- Orbital sanders feature the AIRCAT "smooth design" throttle lever and "ergonomic grip" providing unmatched comfort
- Patented "anti vibration" motor reduces vibration level to 1.8 m/sec²
- Low weight: Orbital sanders 0.9 kg and geared sanders 1.5 kg
- Low profile: Orbital sanders 4.3" high and geared sanders 4.5"

SPECIFICATIONS

| Model No. | Description | Pad Size (in) | Orbit (mm) | Pad Type | No. Vacuum Pad Holes | Free Speed (RPM) |
|----------------|--------------------------------------------|---------------|------------|-------------|----------------------|------------------|
| AC6700-1-332 | Non Vac Palm Sander | 1 | 2.5 | Hook & Loop | 0 | 8,000 |
| AC6700-3-332 | Non Vac Orbital Palm Sander/Polisher | 3 | 2.5 | Hook & Loop | 6 | 11,000 |
| AC6700-3-332CV | Central Vac Orbital Palm Sander/Polisher | 3 | 2.5 | Hook & Loop | 6 | 11,000 |
| AC6700-5-336 | Non Vac Orbital Palm Sander | 5 | 5 | Hook & Loop | 0 | 11,000 |
| AC6700-5-336CV | Central Vac Orbital Palm Sander | 5 | 5 | Hook & Loop | 6 | 11,000 |
| AC6700-6-332 | Non Vac Orbital Palm Sander | 6 | 2.5 | Hook & Loop | 0 | 11,000 |
| AC6700-6-332CV | Central Vac Orbital Palm Sander | 6 | 2.5 | Hook & Loop | 6 | 11,000 |
| AC6700-6-332SV | Self Vac Orbital Palm Sander | 6 | 2.5 | Hook & Loop | 6 | 11,000 |
| AC6700-6-336 | Non Vac Orbital Palm Sander | 6 | 5 | Hook & Loop | 0 | 11,000 |
| AC6700-6-336CV | Central Vac Orbital Palm Sander | 6 | 5 | Hook & Loop | 6 | 11,000 |
| AC6700-6-336SV | Self Vac Orbital Palm Sander | 6 | 5 | Hook & Loop | 6 | 11,000 |
| AC6700-6GCV | Central Vac Geared Planetary Motion Sander | 6 | 5 | Hook & Loop | 6 | 900 |
| AC6700-8GCV | Central Vac Geared Planetary Motion Sander | 8 | 5 | Hook & Loop | 8 | 900 |
| AC6700-JBS-332 | Jitterbug Sander | 195mm x 70mm | 2.5 | Hook & Loop | 6 | 900 |

| Model No. | Weight (kg) | Length w/Pad Fitted (mm) | Width w/Pad Fitted (mm) | Height w/Pad Fitted (mm) | Noise Level d(B)A | Vibration m/sec2 | Average Air Cons. (CFM) | Air Inlet BSP (in.) |
|----------------|-------------|--------------------------|-------------------------|--------------------------|-------------------|------------------|-------------------------|---------------------|
| AC6700-1-332 | 0.77 | 170.18 | 76.20 | 109.22 | 75 | 1.8 | 1.6 | 1/4 |
| AC6700-3-332 | 0.81 | 139.70 | 76.20 | 109.22 | 75 | 1.8 | 1.6 | 1/4 |
| AC6700-3-332CV | 0.81 | 182.88 | 76.20 | 109.22 | 75 | 1.8 | 1.6 | 1/4 |
| AC6700-5-336 | 0.90 | 170.18 | 127.00 | 109.22 | 75 | 1.8 | 1.6 | 1/4 |
| AC6700-5-336CV | 0.90 | 213.36 | 127.00 | 109.22 | 75 | 1.8 | 1.6 | 1/4 |
| AC6700-6-332 | 0.90 | 172.72 | 152.40 | 109.22 | 75 | 1.8 | 1.6 | 1/4 |
| AC6700-6-332CV | 0.90 | 213.36 | 152.40 | 109.22 | 75 | 1.8 | 1.6 | 1/4 |
| AC6700-6-332SV | 0.90 | 205.74 | 152.40 | 109.22 | 75 | 1.8 | 1.6 | 1/4 |
| AC6700-6-336 | 0.90 | 172.72 | 152.40 | 109.22 | 75 | 1.8 | 1.6 | 1/4 |
| AC6700-6-336CV | 0.90 | 213.36 | 152.40 | 109.22 | 75 | 1.8 | 1.6 | 1/4 |
| AC6700-6-336SV | 0.90 | 205.74 | 152.40 | 109.22 | 75 | 1.8 | 1.6 | 1/4 |
| AC6700-6GCV | 1.54 | 279.40 | 152.40 | 114.30 | 78 | 2.5 | 3.0 | 1/4 |
| AC6700-8GCV | 1.58 | 304.80 | 203.20 | 114.30 | 78 | 2.5 | 3.0 | 1/4 |
| AC6700-JBS-332 | 1.13 | 195.00 | 70.00 | 105.41 | 80 | 1.8 | 9.0 | 1/4 |

AC6310 | 6" | DUAL ACTION SANDER



- 10,000 RPM
- 4.76 MM ORBIT
- LOW WEIGHT (1 KG) AND LOW AIR CONSUMPTION (2.5 CFM AVERAGE)
- LUBRICATION FREE AIR MOTOR WITH PATENTED DOUBLE SEALING TO PREVENT DUST CONTAMINATION
- ISOLATED MOTOR DESIGN REDUCES VIBRATION TO 1.8 M/SEC²
- INTERNAL SILENCING SYSTEM REDUCES NOISE LEVEL TO 82 DBA
- BUILT-IN THUMB OPERATED SPEED REGULATOR FOR INSTANT CONTROL
- RUBBERIZED COMFORT PALM GRIP
- LOW PROFILE ONLY 3-3/4" HIGH

AC6315 | 3" | MINI ORBITAL SANDER



- LOW WEIGHT COMPOSITE HOUSING
- TOP MOUNTED ONE-HAND FORWARD/REVERSE SWITCH
- FEATHER SPEED CONTROL TRIGGER
- INTERNAL SILENCING SYSTEM REDUCES NOISE LEVEL TO (88 DBA)
- KIT FEATURES BLOW MOLD STORAGE TRAY, PISTOL GRIP SANDER, BOTH 2" AND 3" SANDING PADS AS WELL AS AN ASSORTMENTS OF 2" AND 3" SAND PAPER

AC6315-K | 3" | MINI ORBITAL SANDER KIT



- LOW WEIGHT COMPOSITE HOUSING
- TOP MOUNTED ONE-HAND FORWARD/REVERSE SWITCH
- FEATHER SPEED CONTROL TRIGGER
- INTERNAL SILENCING SYSTEM REDUCES NOISE LEVEL TO (88 DBA)
- KIT FEATURES BLOW MOLD STORAGE TRAY, PISTOL GRIP SANDER, BOTH 2" AND 3" SANDING PADS AS WELL AS AN ASSORTMENTS OF 2" AND 3" SAND PAPER

SPECIFICATIONS

| Model No. | Free Speed (RPM) | Pad / Belt Size (in.) | Spindle Thread (in.) | Gears | Exhaust | Orbit Off-set (mm) | Weight (kg) | Length (mm) | Vibration Levels M/Sec ² | Air Cons. (CFM) | Rec. Hose Size (in.) | Air Inlet (in.) BSP |
|-----------|------------------|-----------------------|----------------------|--------------|---------|--------------------|-------------|-------------|-------------------------------------|-----------------|----------------------|---------------------|
| AC6310 | 10,000 | 6 | 5/16 - 24 | Direct Drive | Rear | 4.76 | 1.0 | 266.70 | 1.8 | 2.5 | 3/8 | 1/4 |

| Model No. | Free Speed (RPM) | Pad / Belt Size (in.) | Exhaust | Orbit Off-set (mm) | Weight (kg) | Length (mm) | Vibration Level (m/sec ²) | Air Cons. (CFM) | Rec. Hose Size (in.) | Air Inlet (in.) BSP |
|-----------|------------------|-----------------------|---------|--------------------|-------------|-------------|---------------------------------------|-----------------|----------------------|---------------------|
| AC6315 | 16,000 | 5/16-24 | N/A | N/A | 0,71 | 132,08 | 3.3 | 2 | N/A | 1/4 |

| Model No. | Free Speed (RPM) | Pad / Belt Size (in.) | Exhaust | Orbit Off-set (mm) | Weight (kg) | Length (mm) | Vibration Level (m/sec ²) | Air Cons. (CFM) | Rec. Hose Size (in.) | Air Inlet (in.) BSP |
|-----------|------------------|-----------------------|---------|--------------------|-------------|-------------|---------------------------------------|-----------------|----------------------|---------------------|
| AC6315K | 16,000 | 5/16-24 | N/A | N/A | 0,71 | 132,08 | 3.3 | 2 | N/A | 1/4 |

AC6320 | SPOT SANDER AND POLISHER



- FEATURES INTERNAL 1/8" ORBITAL HEAD FOR ULTRA-FINE SANDING AND POLISHING
 - THE COMBINED SPINDLE-COUNTER BALANCE REDUCES VIBRATION LEVELS TO 1.8 M/SEC² AND ADDS RELIABILITY
 - PRECISION ALLOY STEEL SPIRAL-BEVEL GEARS EXTEND TOOL LIFE
 - LAMBSWOOL AND SPONGE POLISHING BONNETS/PADS ARE ALSO AVAILABLE SEPARATELY
 - THE INTERNAL SILENCING SYSTEM REDUCES NOISE LEVELS TO 78 DBA
- SUPPLIED COMPLETE WITH HOOK & LOOP 1.25" AND 2" ROUND AND A TRIANGULAR PADSANDING DISCS FOR ALL THREE PADS TYPES ARE AVAILABLE SEPARATELY IN 120/180/320/600/1000/1500 GRIT SIZES, SANDING DISCS ARE PACKED AS 10 PC. OF EACH GRIT SIZE

AC6320-K | SPOT SANDER AND POLISHER KIT



- FEATURES INTERNAL 1/8" ORBITAL HEAD FOR ULTRA-FINE SANDING AND POLISHING
- THE COMBINED SPINDLE-COUNTER BALANCE REDUCES VIBRATION LEVELS TO 1.8 M/SEC² AND ADDS RELIABILITY
- PRECISION ALLOY STEEL SPIRAL-BEVEL GEARS EXTEND TOOL LIFE
- LAMBSWOOL AND SPONGE POLISHING BONNETS/PADS ARE ALSO AVAILABLE SEPARATELY
- THE INTERNAL SILENCING SYSTEM REDUCES NOISE LEVELS TO 78 DBA
- SUPPLIED COMPLETE WITH HOOK & LOOP 1.25" AND 2" ROUND AND A TRIANGULAR PADSANDING DISCS FOR ALL THREE PADS TYPES ARE AVAILABLE SEPARATELY IN 120/180/320/600/1000/1500 GRIT SIZES, SANDING DISCS ARE PACKED AS 10 PC. OF EACH GRIT SIZE

AC6370 | LOW WEIGHT COMPOSITE VERTICAL POLISHER



- 3,500 RPM
- STALL RESISTANT 0.6 HP MOTOR
- VERY LOW WEIGHT ONLY 2.5 LBS.
- VERY LOW AIR CONSUMPTION ONLY 12.0 CFM
- INCORPORATES INTERNAL SPINDLE THREAD FOR FITTING OF UPHOLSTERY CLEANING BRUSHES
- COMES COMPLETE WITH 7" LAMBS WOOL POLISHING BONNET
- THE COMPOSITE HOUSING AND HANDLES HAVE BEEN ERGONOMICALLY DESIGNED TO PROVIDE UNMATCHED COMFORT FOR THE USER

SPECIFICATIONS

| Model No. | Free Speed (RPM) | Pad / Bonnet Size (in.) | Spindle Thread (in.) | Orbit Off-set (mm) | Weight (kg) | Length (mm) | Vibration Levels M/Sec ² | Air Cons. (CFM) | Rec. Hose Size (in.) | Air Inlet (in.) BSP |
|-----------|------------------|-------------------------|----------------------|--------------------|-------------|-------------|-------------------------------------|-----------------|----------------------|---------------------|
| AC6320 | 13,000 | 1 x 2 | 1/4 | 3.17 | 0.49 | 154.94 | 1.8 | 2.5 | 3/8 | 1/4 |
| Model No. | Free Speed (RPM) | Pad / Bonnet Size (in.) | Spindle Thread (in.) | Orbit Off-set (mm) | Weight (kg) | Length (mm) | Vibration Levels M/Sec ² | Air Cons. (CFM) | Rec. Hose Size (in.) | Air Inlet (in.) BSP |
| AC6320k | 13,000 | 1 x 2 | 1/4 | 3.17 | 0.49 | 154.94 | 1.8 | 2.5 | 3/8 | 1/4 |
| Model No. | Free Speed (RPM) | Motor (HP) | Orbit Off-set | Orbit Off-set (mm) | Weight (kg) | Length (mm) | Vibration Levels M/Sec ² | Air Cons. (CFM) | Rec. Hose Size (in.) | Air Inlet (in.) BSP |
| AC6370 | 3,500 | 0.6 | No | 3.17 | 1.17 | 170,18 | 1.8 | 12 | 3/8 | 1/4 |

SANDERS & POLISERS ACCESSORIES

3" PADS

| PART NO | DESCRIPTION |
|-------------------------|--------------------------------|
| BT0B-38-3V0Y-W30 | Velcro Backing Pad 3" no holes |
| BT0B-38-3V6Y-W30 | Velcro Pad 3" with holes |

5" PADS

| PART NO | DESCRIPTION |
|---------------------|--------------------------|
| BT0B-38-5V0Y | 5" Velcro Pad no holes |
| BT0B-38-5V5Y | 5" Velcro Pad with holes |

6" PADS

| PART NO | DESCRIPTION |
|------------------------|----------------------------------|
| BT0B-38-6V0Y | Velcro Pad 6" no holes |
| BT2HG4-49-6V15Y | 6" Velcro Pad with 15 holes |
| UT-0B-38.2-1 | Pad 6" (Six Holes) Velcro |
| UT-0B-38-1 | Pad Velcro 6" no holes |
| HBL6636K | 6" Velcro Pad no holes |
| H0103 | 6" Vac Velcro Hook Pad (6 holes) |

8" PADS

| PART NO | DESCRIPTION |
|-----------------------|---------------------------|
| BT2HG4-49-8V0Y | 8" Backing Pad no holes |
| BT2HG4-49-8V9Y | 8" Velcro Pad C/W 8 Holes |

PAD HOOK-UP

| | |
|-----------------|---------------------------------------------|
| 90B81732 | RECTANGULAR PAD FOR AIRCAT JITTERBUG SANDER |
|-----------------|---------------------------------------------|



MARVEL

WE HAVE RECOMMENDED
MARVEL AIR TOOL OIL
FOR OVER 30 YEARS.

- Provides positive lubrication for smooth starting
- Dissolves the deposits that cut down tool speed and reduce power output
- Prevents rust formation
- Assures maximum performance
- Lengthens the life of your tools

Part Numbers

| | |
|-------|------------------------------------|
| H0076 | Small bottle 4 US fl. oz. (118ml) |
| H0075 | Case of 48 small bottles |
| H0077 | Large bottle 32 US fl. oz. (946ml) |
| H0078 | Case of 12 large bottles |

Silicone free
ISO Grade 10
Freezingpoint: -51°C
Flashpoint: +51 °C



Marvel's unique formulation has a heavy-duty corrosion inhibitor to protect your AIRCAT Tool from moisture in the air line. It includes a solvent that breaks down deposits and gum, allowing them to be safely blown out of the exhaust, leaving a lasting coating of oil for lubrication and your air tool in peak condition. This oil is silicone free and protects o-rings, seals and other plastic parts.



AH1015PVCREEEL

Ideal for automotive workshops

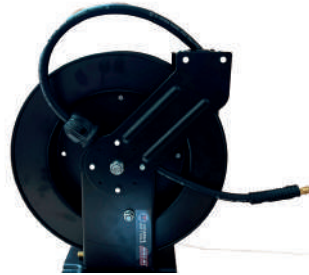
10mm (3/8") ID x 15m long
1/4" BSP M threaded fittings
Automatic or free running
Highly durable composite case
Steel mounting bracket



AH1315RREEEL

Ideal for commercial vehicle workshops and industrial applications

13mm (1/2") ID x 15m long
1/2" BSP M & F threaded fittings
Highest quality rubber hose
Automatic or free running
Reinforced steel housing



AH1015RREEEL

Ideal for commercial vehicle workshops and industrial applications

10mm (1/2") ID x 15m long
1/4" BSP M & F threaded fittings
Highest quality rubber hose
Automatic or free running
Reinforced steel housing



RUBBER WHIP HOSE

Recommended to isolate the vibration at the air tool from the quick coupling and prevent accidents

All supplied with male & female threaded fittings

AH08RWHIP - 8mm ID x 0.5m with 1/4" BSP
AH10RWHIP - 10mm ID x 0.5m with 1/4" BSP
AH13RWHIP - 13mm ID x 0.5m with 1/2" BSP

RUBBER ALLOY, RUBBER &

Working Pressure 290 PSI (20 Bar)
Burst Pressure 870 PSI (60 Bar)
Temperature Range -20°C to +70°C
100% Silicone Free
Oil & Abrasion Resistant



| Rubber Alloy | Rubber | High Viz | Hose ID | Length | Fitting A | Fitting B |
|--------------|---------|----------|---------|--------|---------------|-----------------|
| AH0805RA | AH0805R | AH0805HV | 8mm | 5m | 1/4" BSP Male | 1/4" BSP Male |
| AH0810RA | AH0810R | AH0810HV | 8mm | 10m | 1/4" BSP Male | 1/4" BSP Male |
| AH0815RA | AH0815R | AH0815HV | 8mm | 15m | 1/4" BSP Male | 1/4" BSP Male |
| AH0820RA | AH0820R | AH0820HV | 8mm | 20m | 1/4" BSP Male | 1/4" BSP Male |
| AH1005RA | AH1005R | AH1005HV | 10mm | 5m | 1/4" BSP Male | 1/4" BSP Male |
| AH1010RA | AH1010R | AH1010HV | 10mm | 10m | 1/4" BSP Male | 1/4" BSP Male |
| AH1015RA | AH1015R | AH1015HV | 10mm | 15m | 1/4" BSP Male | 1/4" BSP Male |
| AH1020RA | AH1020R | AH1020HV | 10mm | 20m | 1/4" BSP Male | 1/4" BSP Male |
| AH1305RA | AH1305R | AH1305HV | 13mm | 5m | 1/2" BSP Male | 1/2" BSP Female |
| AH1310RA | AH1310R | AH1310HV | 13mm | 10m | 1/2" BSP Male | 1/2" BSP Female |
| AH1315RA | AH1315R | AH1315HV | 13mm | 15m | 1/2" BSP Male | 1/2" BSP Female |
| AH1320RA | AH1320R | AH1320HV | 13mm | 20m | 1/2" BSP Male | 1/2" BSP Female |



1/4" BSP STANDARD SERIES



Adaptor

Male Female
SA38N SA38FN



Quick Coupling

Male Female
CU38-MN CU38N

1/4" BSP SUPER FLOW



Adaptor

Male Female
SA38NSF SA38FNSF



Quick Coupling

Male Female
CU38-MNSF CU38NSF

3/8" BSP 1/2" BSP 100 SERIES



Adaptor

3/8" BSP Male
1/2" BSP Female
SA12 SA1212



Quick Coupling

Female
CU100F
CU1212

CU38-YN Y-Piece



INTEGRAL TAILPIECES

IT38N 10mm ID to Standard Adaptor
IT12 13mm ID to 100 Series



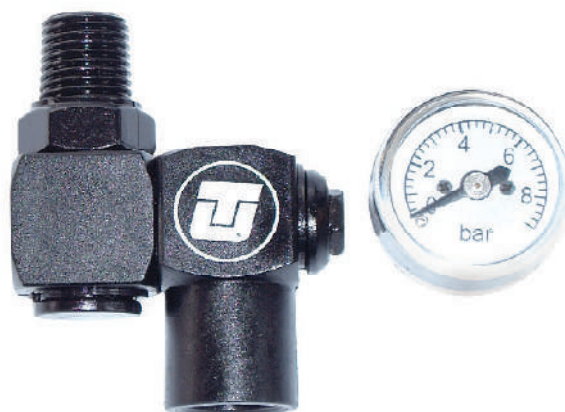
TAILPIECES

TP14 6mm ID to 1/4" BSP
TP38N 10mm ID to 1/4" BSP
TP12 13mm ID to 3/8" BSP
TP1212 13mm ID to 1/2" BSP



H01415

1/4" BSP Swivel
Coupling with Gauge



USE OF ACCESSORIES WITH AIR TOOLS

When selecting the correct accessory to use with your air tool(s) the following points must be carefully checked:

- The accessory is rated to run at or above the maximum rated speed of the air tool that you plan to use it on.
- Air tool Manufacturers specify these speeds in their catalogs and operator instructions.
- Accessories used on abrasive tools, impact wrenches, nut runners, ratchets, air hammers and scaling hammers must be rated for use with the relevant air tool.
- Any accessory used should be of the correct size and design for the air tool(s) that you plan to use it with.
- Worn accessories should not be used and accessories should not be modified in any way.
- Mounting and fitting instruction for any accessory to be used on an air tool must be carefully followed at all times.
- Use of worn or incorrect accessories may reduce tool performance, create excessive tool wear and can be hazardous.
- Always disconnect the tool from the air supply when changing of fitting accessories, guards or other fittings.

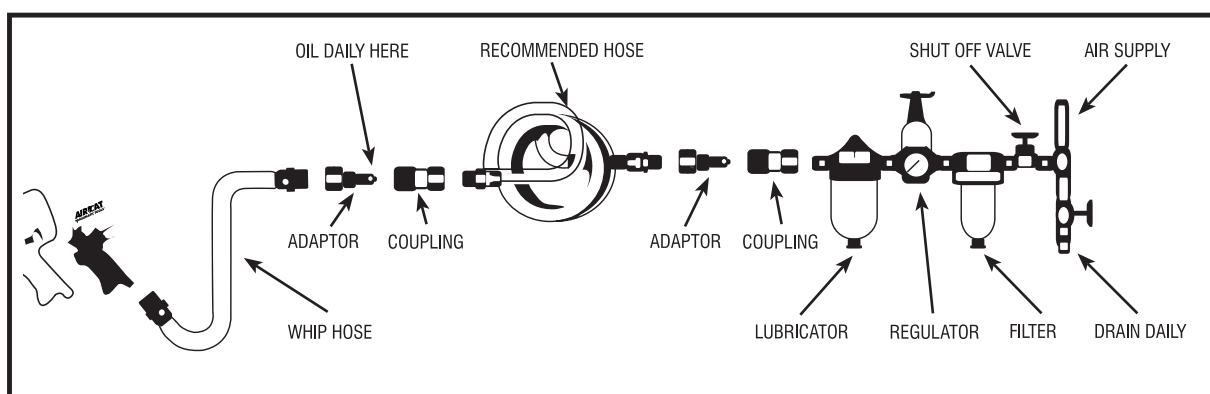
OPERATOR TRAINING FOR AIR TOOL; AIR TOOL ACCESSORY AND COMPRESSED AIR USE

- All operators should be trained in the correct installation and use of the air tool(s) that they are required to operate.
- All operators should be trained to understand the safety instructions provided by the air tool manufacturer, for each air tool that they are required to operate.
- All operators should be trained in the safe use of compressed air and the use of associated air hoses, connectors and air tool accessories.
- All operators should be trained to operate an air tool and accessories safely and correctly on the application that you plan to use them for.
- Operators or service personnel should be trained to ensure that the air installation, lubricators, filters, regulators, hoses and

AIR SUPPLY

Tools of this class operate on a wide range of air pressure. It is recommended that air pressure of these tools measures 90 PSI at the tool while running free. Higher pressure and unclean air will shorten the tool's life because of faster wear and may create a hazardous condition and void the warranty. Water in the air line will cause damage to the tool. Drain the air tank daily. Clean the air inlet filter screen on at least a weekly schedule.

The recommended hookup procedure can be viewed in the illustration below. The air inlet used for connecting air supply has standard 1/4" NPT for smaller tools and 3/8" NPT for larger tools as specified in the tool manual. Line pressure should be increased to compensate for unusually long air hoses (over 25 feet). Minimum hose diameter should be 3/8" I.D. for smaller tools and 1/2" for larger tools as specified in the tool manual.



AIRCAT WARRANTY



AIRCAT® and NITROCAT® air tools are warranted to be free from defects in material and workmanship for 2 years from date of purchase. We will repair or replace; at our option any defective part or unit which proves to be defective in material or workmanship during this 2 year period.



VIBROTHERM DRIVE® air tools and our low weight 1" impact series models (1991, 1991-1 and 1870-P) are warranted to be free from defects in material and workmanship for 3 years from date of purchase. We will repair or replace; at our option any defective part or unit which proves to be defective in material or workmanship during this 3 year period.

The foregoing obligation is AIRCAT® sole liability under this or any implied warranty, under no circumstances shall it be liable for any incidental or consequential damages.

This warranty applies to the tool only. This warranty does not apply to any attached accessories/consumable products; such as drill chucks, sander backing pads, air hammer retainers and chisels or "kit" accessories or any other accessory included with the tool.

Any repair required due to normal wear and tear, abuse, misuse, modification of the tool or repair attempts (by other than an AIRCAT® Authorized Service Center) are not covered by this warranty.

Return your tool to an AIRCAT® Authorized Service Center freight prepaid. Be sure to include your name, address, copy of purchase with date and description of the suspected defect.

AIRCAT whose policy is continued product improvement reserves the right to make changes in design or construction at any time without incurring any obligation on tools previously sold.

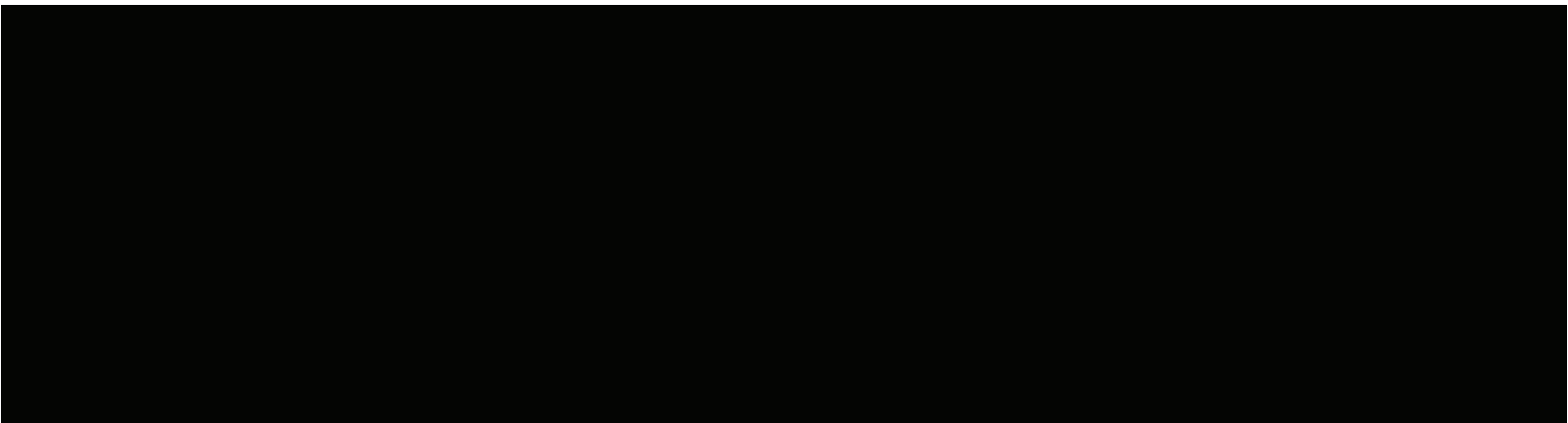
INDUSTRY ASSOCIATIONS



All Universal Air Tool & AIRCAT products are rigorously inspected, and performance tested in our factory before shipping to our customers. If a tool develops a performance problem and an inherent defect is found during normal use and service, Universal Air Tool will warrant this tool against defects in workmanship and materials.

- Wearable parts and products are NOT covered under this warranty. Uncovered items include bearings, contact wheels, hammers, impact mechanism, rotor blades, regulators, valve stems, levers, shrouds, guards, O-rings, seals, gaskets, and other wearable parts.
- All claimed tools (warranty or non-warranty) must be returned only to the certified and approved repair agent of Universal Air Tool Company Ltd.
- Carriage and carriage costs needs to be organized through the relevant Universal Air Tool distribution channel. These costs will be reimbursed if the warranty claim is verified by the repair agent up to the value of 10.00 GBP.
- The original invoice and proof of purchase needs to be sent with the returned tool including a failure report.
- In cases where there is a question regarding possible defective or abused tools, the repair agent will return them to UAT for a determination.
- Tools are warranted against defects in materials and workmanship to the original purchaser.
- These warranties do not apply to items that have been misused, abused, altered in any way, or worn out from use.
- All rotating parts are not covered by the tool's warranty, as this is due to application, use and handling.
- Products used in wrong applications / industries as defined by Universal Air Tool are excluded from this warranty.
- Tools that are sent for inspection or as a warranty claim due to poor compressed air quality or a missing FRL are not warranty cases and will not be accepted.
- If the customer uses more than the prescribed operating pressure of 6.2 bar / 90 psi, which leads to a failure of the tool, this will also not be accepted as a warranty claim and will be rejected.
- After a determination is made, we will credit, replace, or repair the tool at our option. Tools that have been ground, filed, welded, abused, hammered, or modified in any way are not covered under warranty.
- Universal Air Tool Company Ltd. shall not be liable for any consequential or incidental damages incurred by the distribution channel. Distribution channels sole and exclusive remedy for any loss incurred shall be a refund of the selling price. The exclusive remedy for any product found to be defective under the above warranties is limited to the repair or replacement of the defective product without charge.
- Universal Air Tool Company Ltd. will not accept any warranty claims if the products have not been used with the recommended accessories for pneumatic air tools (correct size, length and quality of couplings, adapters, extensions bars, sockets, air hose). This also includes damaged accessories which could have an adverse impact on the performance of the tool.
- In the event of a tool being returned to a repair agent – following inspection no fault is identified, any associated costs will be charged to the relevant distribution channel.

NOTES





KILLER

TORQUE

AIRCAT UK

A Division of Florida Pneumatic
Manufacturing Corporation
Universal Air Tool Company Limited
Unit 8 Lane End Industrial Park
Lane End
High Wycombe
Buckinghamshire
HP14 3BY
Tel: +44 (0)1494 883300
www.aircat-tools.com

AIRCAT
PNEUMATIC TOOLS

AIRCAT EUROPE

Universal Air Tool
Branch Germany
Contact: Derya Kislá
+49 163 2554869
email: dkisla@ut-tools.com
Centroallee 273 - 277
46047 Oberhausen
Germany