



PNEUMATIC TOOLS



ABOUT AIRCAT

WHO WE ARE?

At AIRCAT, we are pioneers in redefining pneumatic power tool performance, with over 25 years of innovation. Since our founding in 1998, we've led the way in developing tools that maximize power and torque while reducing noise—without compromise.

Our tools are engineered to be operator-centric, featuring a patented ergonomic handle designed to alleviate stress and reduce fatigue in hands, wrists, and arms. Additionally, most AIRCAT tools incorporate our exclusive tuned exhaust silencer technology, a groundbreaking system that allows air to discharge freely, preventing back pressure. This innovation not only ensures maximum power retention but also substantially minimizes noise levels, setting a new industry standard in operator comfort and tool efficiency.

Precision Perfected

Engineered for Excellence

Guaranteed Quality

Reliability You Can Trust





CONTENTS

Get to know Aircat Tool

IMPACT WRENCHES

Powerful, reliable, low-noise tools for demanding tasks.

Built for power, precision, and lasting

GRINDERS AND CUT OFF TOOLS

Proven durability in industrial

DRILLS

Power through every challenge with

Maximum impact, durability, and precision for the toughest tasks in any environment.

AIR SAWS, SAW BLADES AND NEEDLES

TYRE BUFFERS

SANDERS AND POLISHERS

QUALITY PRODUCTS

CUSTOMER FIRST!

Customer-Centric Design:

Every AIRCAT tool is designed to prioritize your needs, comfort, and satisfaction.

Quiet and Ergonomic:

Engineered for noise reduction and comfort to make your work safer and more efficient.

Exceptional Durability:

Built with high-quality materials and cutting-edge technology to withstand the toughest conditions.

Outstanding Performance:

Delivers unmatched power, precision, and longevity for professionals in demanding industries.

A Trusted Partner:

Choosing AIRCAT means partnering with a brand dedicated to your success and excellence.

ERGONOMIC DESIGN FOR COMFORT:

Ergonomic Excellence:

Designed with comfortable handles for hours of use with minimal strain.

Lightweight Construction:

Built to reduce fatigue, enabling longer and more efficient work sessions.

Enhanced Comfort:

Tools crafted with your needs in mind for seamless comfort and performance.

Precision and Performance:

Engineered to combine precision with exceptional functionality.

Elevate Your Work:

Discover how AIRCAT's ergonomic design enhances your expertise and productivity.

PRODUCT AT A FAIR PRICE!

Affordable Excellence:

AIRCAT tools deliver high-quality performance at competitive, accessible price points.

Uncompromised Value:

Exceptional durability and efficiency without the extravagant price tag.

Innovative Design:

Engineered for superior functionality to make your work easier and more efficient.

Business-Friendly Pricing:

Tools designed to fit your budget without sacrificing quality or performance.

Transformative Results:

Discover the perfect balance of quality and affordability—choose AIRCAT and elevate your work.



WHAT MAKES AIRCAT DIFFERENT FROM OUR COMPETITORS?

AIRCAT is committed to delivering exceptional customer service, making sure you receive the assistance you need whenever you need it. Whether it's about placing orders, product inquiries, or repair support, our industry-leading team is here to provide fast, efficient, and reliable responses. Your satisfaction is our top priority, and we work hard to ensure you experience a seamless and hassle-free process every time.

Don't hesitate to reach out to our dedicated team—we're here to support your business and help you succeed. Contact us today at +44 1494 88 3300 or email us at enquiries@ut-tools.com. We look forward to working with you and delivering the best solutions for your needs!



HIGHER TORQUE AND POWER:

Aircat tools are designed to deliver exceptional torque and power, ensuring that even the toughest jobs are carried out with ease. Our impact wrenches, for example, provide maximum torque for fast and efficient performance, reducing time spent on tasks and increasing productivity.

DURABILITY AND LONGEVITY:

Built to last, Aircat tools feature high-quality materials and precision engineering. Our tools undergo rigorous testing to ensure they can withstand demanding industrial environments. Features such as superior steel internal bearings and robust construction mean that Aircat tools offer exceptional durability and a longer service life.




Power, precision and comfort - Redefining pneumatic tools.

Align yourself with AIRCAT, a leader in innovative, high-performance pneumatic tools. With a strong presence in the automotive and industrial sectors, AIRCAT provides a solid foundation for business growth. As a representative, you'll receive comprehensive training, marketing materials, and continuous support to ensure your success. Our tools are known for superior power, precision, and ergonomic design—qualities that make them the preferred choice for professionals. Join the AIRCAT team and gain a competitive edge with tools that excel in noise reduction, vibration control, and user comfort. Embrace a partnership rooted in excellence and innovation.

IMPACT WRENCHES



AIRCAT
PNEUMATIC



High Torque Performance
Innovative Vibrotherm Drive
Ergonomic and Quiet
Durability You Can Trust

AIRCAT
PNEUMATIC TOOLS

AIRCAT mechanisms - Power and Durability in Every Impact

Discover the advanced technology behind AIRCAT IMPACT WRENCHES, designed to offer maximum performance, lower vibration and long service life. Ideal for demanding tasks, our tools guarantee efficiency and reliability in any professional application.



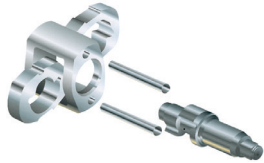
UNBEATABLE STRENGTH

AIRCAT tools: Power, durability and innovation for demanding professionals.

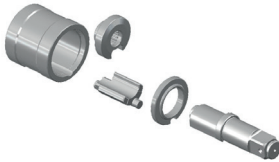
WHEN YOU HAVE REAL WORK TO DO...
GRAB AN **AIRCAT**.



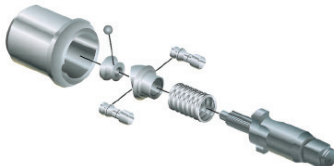
VIBROTHERM DRIVE: AIRCAT's patented system that offers faster impact frequency, high torque, low vibration and greater durability. The elimination of pins and the use of a plate that retains lubrication reduce wear and extend the life of the equipment.



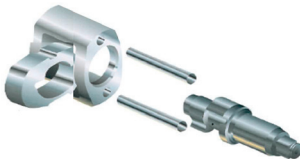
TWIN HAMMER: Mechanism most commonly used in AIRCAT 3/8', 1/2' and 3/4' impact models. AIRCAT MODELS. Produces two impacts per rotation, ensuring a high frequency of blows and high torque.



PIN-LESS HAMMER: Used on AIRCAT 1' impact wrenches. AIRCAT 1' impact wrenches, this robust, pin-less system offers greater reliability for heavy-duty jobs, with a large hammer that produces a strong impact per revolution hammer that produces a strong impact per rotation.



TWIN CLUTCH: Present on the NITROCAT 1/2' models, it is ideal for difficult motors and screws, providing high initial torque and high initial torque and smooth operation with rapid acceleration.



JUMBO HAMMER: Fitted to AIRCAT compact AIRCAT and NITROCAT compact models, this mechanism delivers high torque in a small size, with a powerful impact per revolution.



TWO JAW CLUTCH: Exclusive to the AIRCAT 1890-P 1' model, this mechanism eliminates the traditional impact, increasing torque and reducing wear and tear. Ideal for work, such as vehicle maintenance off-road vehicles and building steel structures.

WHEN YOU HAVE REAL WORK TO DO...
GRAB AN **AIRCAT**.

IMPACT WRENCHES 1/2"



1056-XL

1/2" COMPOSITE COMPACT IMPACT WRENCH

MAX. TORQUE (NM)	LOOSENING TORQUE (NM)	SQUARE DRIVE (IN.)	IMPACTS PER MINUTE	SPEED (RPM)	BOLT CAPACITY (MM)	WEIGHT (KG)	LENGTH (MM)	LEVEL VIBRATION (SEC2)	AIR CONS. (CFM)	REC. HOSE SIZE (IN.)
750	1016	1/2"	1650	9.000	15	1.13	107	9.9	8	3/8"



- LOW WEIGHT CONSTRUCTION
- DELIVERY MAXIMUM POWER
- 85 DBA NOISE LEVEL



TUNE-UP KIT CONTAINS SPARES NO.:
2, 3, 15, 18, 23, 27, 29, 32, 40, 45



1057-TH

1/2" | STUBBY IMPACT WRENCH

MAX. TORQUE (NM)	LOOSENING TORQUE (NM)	SQUARE DRIVE (IN.)	IMPACTS PER MINUTE	SPEED (RPM)	BOLT CAPACITY (MM)	WEIGHT (KG)	LENGTH (MM)	LEVEL VIBRATION (SEC2)	AIR CONS. (CFM)	REC. HOSE SIZE (IN.)
680	950	1/2"	1600	9.000	13	1.27	98	12.5	8	3/8"



- RELIABLE JUMBO HAMMER MECHANISM
- TRIGGER MOUNTED COMBINED FORWARD/REVERSE
- LOW WEIGHT ALUMINUM ALLOY HOUSING



TUNE-UP KIT CONTAINS SPARES NO.:
9, 14, 19, 24, 25, 28, 30, 32, 37



1058-VXL & 1059-VXL

1/2" & 3/8" | COMPACT IMPACT WRENCH

MAX. TORQUE (NM)	LOOSENING TORQUE (NM)	SQUARE DRIVE (IN.)	IMPACTS PER MINUTE	SPEED (RPM)	BOLT CAPACITY (MM)	WEIGHT (KG)	LENGTH (MM)	LEVEL VIBRATION (SEC2)	AIR CONS. (CFM)	REC. HOSE SIZE (IN.)
750	1016	1/2" & 3/8"	1700	9.000	15	1.27	111	4.3	8	3/8"



- NEW MECHANISM CUTS VIBRATIONS BY 30%-40%
- VIBROTHERM DRIVE TECHNOLOGY
- PATENTED GRIP ENSURES AIRCAT'S COMFORT



TUNE-UP KIT CONTAINS SPARES NO.:
4B, 6, 12, 19, 20, 22, 26, 28, 30, 32, 33, 36, 41, 42, 43B



NEW

1070

1/2" | GEARLESS AIR ANGLE IMPACT WRENCH

MAX. TORQUE (NM)	LOOSENING TORQUE (NM)	SQUARE DRIVE (IN.)	IMPACTS PER MINUTE	SPEED (RPM)	BOLT CAPACITY (MM)	WEIGHT (KG)	LENGTH (MM)	SOUND PRESSUR DB(A)	AIR CONS. (CFM)	REC. HOSE SIZE (IN.)
------------------	-----------------------	--------------------	--------------------	-------------	--------------------	-------------	-------------	---------------------	-----------------	----------------------



- 360° ROTATIONAL EXHAUST
- FEATHER TRIGGER
- JUMBO HAMMER MECHANISM



TUNE-UP KIT CONTAINS SPARES NO.:
4, 17, 22, 23, 24, 26, 27, 29, 30, 40, 41, 44



NEW

1125

1/2" | IMPACT WRENCH

MAX. TORQUE (NM)	LOOSENING TORQUE (NM)	SQUARE DRIVE (IN.)	IMPACTS PER MINUTE	SPEED (RPM)	BOLT CAPACITY (MM)	WEIGHT (KG)	LENGTH (MM)	LEVEL VIBRATION (SEC2)	AIR CONS. (CFM)	REC. HOSE SIZE (IN.)
1355	1695	1/2"	1600	8.500	19	1.72	180	8.1	8	1/4"



- SETS INDUSTRY STANDARD FOR WEIGHT & POWER
- PATENTED EASY FLIP LEVER
- DURABLE COMPOSITE HOUSING



TUNE-UP KIT CONTAINS SPARES NO.:
2, 4, 15, 17, 20, 22, 27, 29, 32, 33, 35, 37, 42



1150 1/2" IMPACT WRENCH										
MAX. TORQUE (NM)	LOOSENING TORQUE (NM)	SQUARE DRIVE (IN.)	IMPACTS PER MINUTE	SPEED (RPM)	BOLT CAPACITY (MM)	WEIGHT (KG)	LENGTH (MM)	LEVEL VIBRATION (SEC2)	AIR CONS. (CFM)	REC. HOSE SIZE (IN.)
1250	1755	1/2"	1400	9.000	15	2.04	190	8.1	8	3/8"



- MOST POWERFUL IMPACT IN ITS CLASS 1/2"
- HARD HITTING TWIN HAMMER MECHANISM
- PATENTED ERGONOMICALLY DESIGNED HANDLE



TUNE-UP KIT CONTAINS SPARES NO.:
5, 7, 13, 16, 19, 23, 26, 32, 33, 34, 37, 39, 40, 47



1178-VXL 1/2" IMPACT WRENCH										
MAX. TORQUE (NM)	LOOSENING TORQUE (NM)	SQUARE DRIVE (IN.)	IMPACTS PER MINUTE	SPEED (RPM)	BOLT CAPACITY (MM)	WEIGHT (KG)	LENGTH (MM)	LEVEL VIBRATION (SEC2)	AIR CONS. (CFM)	REC. HOSE SIZE (IN.)
1290	1762	1/2"	1400	7.500	19	2	203	6.5	8	1/4"



- NEW MECHANISM CUTS VIBRATIONS BY 30%-40%
- PATENTED MUFFLER ENSURES LOW NOISE (86 DBA)
- PATENTED GRIP ENSURES COMFORT



TUNE-UP KIT CONTAINS SPARES NO.:
4, 6, 12, 21, 23, 26, 31, 33, 34, 37, 40, 42, 43, 44



1280-IND 1/2" COMPOSITE IMPACT WRENCH										
MAX. TORQUE (NM)	LOOSENING TORQUE (NM)	SQUARE DRIVE (IN.)	IMPACTS PER MINUTE	SPEED (RPM)	BOLT CAPACITY (MM)	WEIGHT (KG)	LENGTH (MM)	LEVEL VIBRATION (SEC2)	AIR CONS. (CFM)	REC. HOSE SIZE (IN.)
1100	1507	1/2"	1600	8.000	14.3	2.09	168	8.1	8	3/8"



- 4-POSITION POWER SWITCH AT BACK CAP
- BUILT-IN SIDE IMPACT BUFFERS
- LOW WEIGHT COMPOSITE HOUSINGS



TUNE-UP KIT CONTAINS SPARES NO.:
2, 3, 15, 16, 19, 21, 22, 27, 32, 33, 40, 46



1431 1/2" IMPACT WRENCH										
MAX. TORQUE (NM)	LOOSENING TORQUE (NM)	SQUARE DRIVE (IN.)	IMPACTS PER MINUTE	SPEED (RPM)	BOLT CAPACITY (MM)	WEIGHT (KG)	LENGTH (MM)	LEVEL VIBRATION (SEC2)	AIR CONS. (CFM)	REC. HOSE SIZE (IN.)
1080	1355	1/2"	1600	9.000	13	2.5	182	12.5	8	3/8"



- TRIPLE HEAT-TREATED STEEL PARTS ENSURE RELIABILITY
- CROSS BOLT FOR FORWARD/REVERSE AND POWER CONTROL
- ERGONOMIC GRIP FOR UNMATCHED COMFORT



TUNE-UP KIT CONTAINS SPARES NO.:
4, 8, 14, 16, 21, 22, 26, 32, 35, 37, 39



1450 & 1450-2 1/2" IMPACT WRENCH										
MAX. TORQUE (NM)	LOOSENING TORQUE (NM)	SQUARE DRIVE (IN.)	IMPACTS PER MINUTE	SPEED (RPM)	BOLT CAPACITY (MM)	WEIGHT (KG)	LENGTH (MM)	LEVEL VIBRATION (SEC2)	AIR CONS. (CFM)	REC. HOSE SIZE (IN.)
1090	1355	1/2"	1200	9.000	15	2.2	177	13.5	8	3/8"
1090	1355	1/2" x 2"	1200	9.000	15	2.3	228	14.0	8	3/8"



- VERY FAST TORQUE DEVELOPMENT
- 6-POSITION POWER SWITCH FOR ULTIMATE CONTROL
- TWIN HAMMER INCREASES EFFICIENCY



TUNE-UP KIT CONTAINS SPARES NO.:
9, 12, 16, 19, 23, 26, 28, 30, 33

WHEN YOU HAVE REAL WORK TO DO...
GRAB AN **AIRCAT**.

IMPACT WRENCHES 3/4"



1600-TH-A

3/4" | "SUPER DUTY" IMPACT WRENCH

MAX. TORQUE (NM)	LOOSENING TORQUE (NM)	SQUARE DRIVE (IN.)	IMPACTS PER MINUTE	SPEED (RPM)	BOLT CAPACITY (MM)	WEIGHT (KG)	LENGTH (MM)	LEVEL VIBRATION (SEC2)	AIR CONS. (CFM)	REC. HOSE SIZE (IN.)
1900	2169	3/4"	900	4.500	22	3.67	234	7.4	10	1/2"



- SUPER CLUTCH TWIN HAMMER MECHANISM
- IDEAL FOR BUSES, LARGE VEHICLES, AND BOLT ASSEMBLY
- IDEAL FOR GENERAL MAINTENANCE



TUNE-UP KIT CONTAINS SPARES NO.:
5, 7, 13, 16, 18, 20, 22, 23, 31, 32, 36, 38, 39



1777

3/4" | "SUPER DUTY" IMPACT WRENCH

MAX. TORQUE (NM)	LOOSENING TORQUE (NM)	SQUARE DRIVE (IN.)	IMPACTS PER MINUTE	SPEED (RPM)	BOLT CAPACITY (MM)	WEIGHT (KG)	LENGTH (MM)	LEVEL VIBRATION (SEC2)	AIR CONS. (CFM)	REC. HOSE SIZE (IN.)
1900	2305	3/4"	1600	9.000	13	3.4	97.90	12.5	60	3/8"



- TRIPLE HEAT-TREATED STEEL FOR RELIABILITY
- REFINED TWIN HAMMER BOOSTS EFFICIENCY AND LIFESPAN
- VERY FAST TORQUE DEVELOPMENT



TUNE-UP KIT CONTAINS SPARES NO.:
7, 11, 14, 15, 17, 20, 24, 25, 31, 34.



1778-VXL

3/4" | IMPACT WRENCH

MAX. TORQUE (NM)	LOOSENING TORQUE (NM)	SQUARE DRIVE (IN.)	IMPACTS PER MINUTE	SPEED (RPM)	BOLT CAPACITY (MM)	WEIGHT (KG)	LENGTH (MM)	LEVEL VIBRATION (SEC2)	AIR CONS. (CFM)	REC. HOSE SIZE (IN.)
1900	2305	3/4"	1400	7.500	19	2.9	203	6.5	8	1/4"



- PATENTED GRIP ENSURES AIRCAT® COMFORT
- NEW MECHANISM CUTS VIBRATIONS BY 30%-40%
- PATENTED MUFFLER ENSURES UNMATCHED LOW NOISE



TUNE-UP KIT CONTAINS SPARES NO.:
4, 6, 12, 21, 23, 27, 29, 31, 33, 34, 42, 43

IMPACT WRENCHES 1"



1900-A & 1900A-1

1" x 8" | EXTENDED "SUPER DUTY" IMPACT WRENCH

MAX. TORQUE (NM)	LOOSENING TORQUE (NM)	SQUARE DRIVE (IN.)	IMPACTS PER MINUTE	SPEED (RPM)	BOLT CAPACITY (MM)	WEIGHT (KG)	LENGTH (MM)	LEVEL VIBRATION (SEC2)	AIR CONS. (CFM)	REC. HOSE SIZE (IN.)
2580	2982	1"x8"	1600	5.500	32	11.7	558	12.1	12	1/2"



- HARD HITTING TWIN HAMMER
- DURABLE ALUMINUM HOUSING
- RUGGED 'SUPER CLUTCH' TWIN HAMMER



TUNE-UP KIT CONTAINS SPARES NO.:
07, 14, 18, 20, 22, 23, 28

WHEN YOU HAVE REAL WORK TO DO...
GRAB AN **AIRCAT**.



1991 & 1991-1

1" x 7" | EXTENDED IMPACT WRENCH

MAX. TORQUE (NM)	LOOSENING TORQUE (NM)	SQUARE DRIVE (IN.)	IMPACTS PER MINUTE	SPEED (RPM)	BOLT CAPACITY (MM)	WEIGHT (KG)	LENGTH (MM)	LEVEL VIBRATION (SEC2)	AIR CONS. (CFM)	REC. HOSE SIZE (IN.)
2850	3118	1"x7"	1600	6.000	32	9.38	482	8.8	8	1/2"
2850	3118	1"	1600	6.000	32	7.57	327	8.8	8	1/2"



- UNMATCHED POWER TO WEIGHT RATIO
- FRICTION-RIVVING AND THROUGH-HOLE RETAINERS COMBINED
- EXHAUST ADJUSTABLE TO TOP OR BOTTOM



TUNE-UP KIT CONTAINS SPARES NO.:
07, 17, 20, 21, 23, 40, 41



NEW

1992-A & 1992-A-1

1" X 6" | EXTENDED STRAIGHT IMPACT WRENCH

MAX. TORQUE (NM)	LOOSENING TORQUE (NM)	SQUARE DRIVE (IN.)	IMPACTS PER MINUTE	SPEED (RPM)	BOLT CAPACITY (MM)	WEIGHT (KG)	LENGTH (MM)	LEVEL VIBRATION (SEC2)	AIR CONS. (CFM)	REC. HOSE SIZE (IN.)
2169	2440	1"x6"	1600	5.000	25.4	11.5	513	9.6	12	1/2"
2169	2440	1"	1600	5.000	25.4	10.5	393	9.6	12	1/2"



- ENLARGED CAVITY IN ROTATING 'D' HANDLE
- TRIPLE-HEATED STEEL ENSURES ULTIMATE RELIABILITY
- RUBBER COVER PROTECTS MOTOR HOUSING



TUNE-UP KIT CONTAINS SPARES NO.:
12, 20, 22, 31, 33, 36, 37



1993-VXL & 1993-1-VXL

1" x 7" | VIBROTHERM IMPACT WRENCH

MAX. TORQUE (NM)	LOOSENING TORQUE (NM)	SQUARE DRIVE (IN.)	IMPACTS PER MINUTE	SPEED (RPM)	BOLT CAPACITY (MM)	WEIGHT (KG)	LENGTH (MM)	LEVEL VIBRATION (SEC2)	AIR CONS. (CFM)	REC. HOSE SIZE (IN.)
2850	3120	1"x7"	950	6.000	32	9.16	473	12.7	10	1/2"
2850	3120	1"	950	6.000	32	8.3	340	12.7	10	1/2"



- NEW VIBRATION MECHANISM
- UNMATCHED POWER-TO-WEIGHT RATIO
- FRICTION-RING AND THROUGH-HOLE RETAINER

VIBROTHERM
by **AIRCAT.DRIVE**



TUNE-UP KIT CONTAINS SPARES NO.:
04, 11, 14, 19, 27, 39, 46



NEW

1994 & 1994-1

1" X 8" | EXTENDED "SUPER DUTY" STRAIGHT IMPACT WRENCH

MAX. TORQUE (NM)	LOOSENING TORQUE (NM)	SQUARE DRIVE (IN.)	IMPACTS PER MINUTE	SPEED (RPM)	BOLT CAPACITY (MM)	WEIGHT (KG)	LENGTH (MM)	LEVEL VIBRATION (SEC2)	AIR CONS. (CFM)	REC. HOSE SIZE (IN.)
3120	3390	1"x8"	1100	4.500	25.4	15.8	660	12.0	12	1/2"
3120	3390	1"	1100	4.500	25.4	15	530	12.0	12	1/2"



- THE TRUCK TIRE REFERENCE
- MOST RELIABLE 1" IMPACT WRENCH
- TRIPLE-TREATED STEEL HAMMER CAGE AND ANVIL



TUNE-UP KIT CONTAINS SPARES NO.:
11, 17, 21, 32, 34, 35, 40

WHEN YOU HAVE REAL WORK TO DO...
GRAB AN **AIRCAT**.

IMPACT WRENCHES 1"



1997 1" X 8" 1" SQ DRV IMPACT WRENCH (8" ANVIL) LIGHTWEIGHT										
MAX. TORQUE (NM)	LOOSENING TORQUE (NM)	SQUARE DRIVE (IN.)	IMPACTS PER MINUTE	SPEED (RPM)	SCREW CAPACITY (MM)	WEIGHT (KG)	LENGTH (MM)	LEVEL VIBRATION (SEC2)	AIR CONS. (CFM)	REC. HOSE SIZE (IN.)
2441	2650	1"x8"	1600	6.000	25.4	7.5	547	6.6	10	1/2"



- HANDLE PROVIDES FULL CONTROL FOR THE OPERATOR
- LIGHTWEIGHT & POWERFUL
- BEST IN CLASS WITH ONLY 7.5 KG



TUNE-UP KIT CONTAINS SPARES NO.:
07, 10, 11, 13, 16, 27, 35



1997S 1" X 2" 1" SQ DRV IMPACT WRENCH (2" ANVIL) LIGHTWEIGHT										
MAX. TORQUE (NM)	LOOSENING TORQUE (NM)	SQUARE DRIVE (IN.)	IMPACTS PER MINUTE	SPEED (RPM)	SCREW CAPACITY (MM)	WEIGHT (KG)	LENGTH (MM)	LEVEL VIBRATION (SEC2)	AIR CONS. (CFM)	REC. HOSE SIZE (IN.)
2441	2650	1"x2"	1600	6.000	25.4	6.3	378	6.6	10	1/2"



- STRAIGHT REAR HANDLE
- SHORT ANVIL AVAILABLE
- BUILT FOR FLEET AND MAINTENANCE SERVICES



TUNE-UP KIT CONTAINS SPARES NO.:
07, 10, 11, 13, 16, 27, 35



1997-AH 1" X 8" 1" IMPACT WRENCH (8" ANVIL) LIGHTWEIGHT										
MAX. TORQUE (NM)	LOOSENING TORQUE (NM)	SQUARE DRIVE (IN.)	IMPACTS PER MINUTE	SPEED (RPM)	SCREW CAPACITY (MM)	WEIGHT (KG)	LENGTH (MM)	LEVEL VIBRATION (SEC2)	AIR CONS. (CFM)	REC. HOSE SIZE (IN.)
2441	2650	1"x8"	1600	6.000	25.4	7.5	492	6.6	10	1/2"



- CRANKED REAR HANDLE
- ROBUST ANVIL ENSURES DURABILITY
- HIGHLY EFFICIENT



TUNE-UP KIT CONTAINS SPARES NO.:
07, 10, 11, 13, 16, 27, 35



1997-AHS 1" X 2" 1" IMPACT WRENCH (2" ANVIL) LIGHTWEIGHT										
MAX. TORQUE (NM)	LOOSENING TORQUE (NM)	SQUARE DRIVE (IN.)	IMPACTS PER MINUTE	SPEED (RPM)	SCREW CAPACITY (MM)	WEIGHT (KG)	LENGTH (MM)	LEVEL VIBRATION (SEC2)	AIR CONS. (CFM)	REC. HOSE SIZE (IN.)
2441	2650	1"x2"	1600	6.000	25.4	6.5	324	6.6	10	1/2"



- LOW WEIGHT WITH EXCEPTIONAL POWER
- REDUCES FATIGUE AND STRAIN.
- ERGONOMIC BACK HANDLE FOR COMFORT, SHORT ANVIL.



TUNE-UP KIT CONTAINS SPARES NO.:
07, 10, 11, 13, 16, 27, 35



AC1997

IMPACT WRENCHES 1"



1600-TH-A1

1" | COMPOSITE IMPACT WRENCH

MAX. TORQUE (NM)	LOOSENING TORQUE (NM)	SQUARE DRIVE (IN.)	IMPACTS PER MINUTE	SPEED (RPM)	BOLT CAPACITY (MM)	WEIGHT (KG)	LENGTH (MM)	LEVEL VIBRATION (SEC2)	AIR CONS. (CFM)	REC. HOSE SIZE (IN.)
1900	2169	1"	1100	4,500	32	3.7	234	7.4	10	3/8"



- POWERFUL 'SUPER CLUTCH' TWIN HAMMER
- PATENTED FLIP LEVER FOR FORWARD/REVERSE
- IDEAL FOR GENERAL MAINTENANCE



TUNE-UP KIT CONTAINS SPARES NO.:
5, 7, 13, 16, 18, 20, 22, 23, 31, 32, 36, 38, 39



1870-P

1" | "SUPER DUTY" PISTOL LIGHTWEIGHT IMPACT WRENCH

MAX. TORQUE (NM)	LOOSENING TORQUE (NM)	SQUARE DRIVE (IN.)	IMPACTS PER MINUTE	SPEED (RPM)	BOLT CAPACITY (MM)	WEIGHT (KG)	LENGTH (MM)	LEVEL VIBRATION (SEC2)	AIR CONS. (CFM)	REC. HOSE SIZE (IN.)
2578	2850	1"	1400	7,500	32	5.8	271	8.6	7.5	1/2"



- LOW WEIGHT IMPACT-RESISTANT HOUSING
- CRANKED SIE HANDLE
- COMBINED FRICTION-RING AND THROUGH-HOLE RETAINERS



TUNE-UP KIT CONTAINS SPARES NO.:
03, 07, 13, 14, 19, 25, 27



THE POWER OF

Now you know the power and quality of our impact wrenches.

If you want to find out more about each tool and its applications, scan the QR Code and visit our website!



RATCHETS



AIRCAT
PNEUMATICS



Expanded Aircat ratchet wrench range for greater choice and versatility.

Includes impact, long reach, and sealed flat head models.

Designed for modern working environments.

Features high durability, improved ergonomics, and superior power.

AIRCAT
PNEUMATIC TOOLS®

WHEN YOU HAVE REAL WORK TO DO...
GRAB AN **AIRCAT**.

RATCHETS



800 1/4" MINI COMPOSITE SINGLE PAWL RATCHET									
MAX. TORQUE (NM)	SQUARE DRIVE (IN.)	SPEED (RPM)	SCREW CAPACITY (MM)	WEIGHT (KG)	LENGTH (MM)	LEVEL VIBRATION (SEC2)	AIR CONS. (CFM)	REC. HOSE SIZE (IN.)	AIR INLET (IN.)
50	1/4"	320	10	0.7	215	2.3	4	3/8"	1/4"

- SINGLE PAWL MECHANISM
- SUPERIOR INTERNAL MECHANICS
- ERGONOMICALLY DESIGNED HOUSING



TUNE-UP KIT CONTAINS SPARES NO.:
08, 16C, 28, 31, 34, 40, 42



801 3/8" MINI COMPOSITE SINGLE PAWL RATCHET									
MAX. TORQUE (NM)	SQUARE DRIVE (IN.)	SPEED (RPM)	SCREW CAPACITY (MM)	WEIGHT (KG)	LENGTH (MM)	LEVEL VIBRATION (SEC2)	AIR CONS. (CFM)	REC. HOSE SIZE (IN.)	AIR INLET (IN.)
50	3/8"	320	10	0.7	215	2.3	4	3/8"	1/4"

- UNIQUE LOCKING MECHANISM
- PRECISION-ENGINEERED INTERNAL COMPONENTS
- ERGONOMICALLY CRAFTED EXTERIOR DESIGN



TUNE-UP KIT CONTAINS SPARES NO.:
08, 16C, 27, 31, 34, 35, 43



802 3/8" COMPOSITE TWIN PAWL RATCHET									
MAX. TORQUE (NM)	SQUARE DRIVE (IN.)	SPEED (RPM)	SCREW CAPACITY (MM)	WEIGHT (KG)	LENGTH (MM)	LEVEL VIBRATION (SEC2)	AIR CONS. (CFM)	REC. HOSE SIZE (IN.)	AIR INLET (IN.)
100	3/8"	280	10	1.2	266	3.2	4	3/8"	1/4"

- DURABLE TWIN PAWL MECHANISM
- FEATHER TRIGGER FOR CONTROL
- PATENTED QUIET TUNED EXHAUST (82 DBA)



TUNE-UP KIT CONTAINS SPARES NO.:
08, 16C, 29, 33, 36, 39, 40, 44



802-5 1/2" COMPOSITE TWIN PAWL RATCHET									
MAX. TORQUE (NM)	SQUARE DRIVE (IN.)	SPEED (RPM)	SCREW CAPACITY (MM)	WEIGHT (KG)	LENGTH (MM)	LEVEL VIBRATION (SEC2)	AIR CONS. (CFM)	REC. HOSE SIZE (IN.)	AIR INLET (IN.)
100	1/2"	280	10	1.2	266	3.2	4	3/8"	1/4"

- ROBUST DUAL PAWL SYSTEM
- EXCLUSIVE QUIET-TUNED EXHAUST (82 DBA)
- PRECISION FEATHER TRIGGER FOR ENHANCED CONTROL



TUNE-UP KIT CONTAINS SPARES NO.:
10, 11, 31, 33, 36, 39, 40G, 44



804 1/4" MINI COMPOSITE SINGLE PAWL RATCHET									
MAX. TORQUE (NM)	SQUARE DRIVE (IN.)	SPEED (RPM)	SCREW CAPACITY (MM)	WEIGHT (KG)	LENGTH (MM)	LEVEL VIBRATION (SEC2)	AIR CONS. (CFM)	REC. HOSE SIZE (IN.)	AIR INLET (IN.)
40	1/4"	280	10	0.7	181	2.3	4	3/8"	1/4"

- UNIQUE TRANSMISSION GEAR BOOSTS TORQUE RATE
- ONE-PIECE ALLOY STEEL HOUSING ENSURES RELIABILITY AND PREVENTS LOOSENING.



TUNE-UP KIT CONTAINS SPARES NO.:
103, 107, 108, 109, 302, 304, 305

WHEN YOU HAVE REAL WORK TO DO...
GRAB AN **AIRCAT**.



805-HT & 805-HT-5 3/8" 1/2" HIGH TORQUE RATCHET									
MAX. TORQUE (NM)	SQUARE DRIVE (IN.)	SPEED (RPM)	SCREW CAPACITY (MM)	WEIGHT (KG)	LENGTH (MM)	LEVEL VIBRATION (SEC2)	AIR CONS. (CFM)	REC. HOSE SIZE (IN.)	AIR INLET (IN.)
180	3/8" & 1/2"	180	16	1.49	316	6.6	6	3/8"	1/4"

- RELIABLE SINGLE PAWL DESIGN
- EXTRA LARGE RATCHET HEAD INCREASES RELIABILITY
- LATEST DESIGN RATCHET HEAD ELIMINATES "SPREADING"



TUNE-UP KIT CONTAINS SPARES NO.:
9, 11, 12, 13, 16, 26



807 & 807-25 3/8" 1/4" "MINI" COMPOSITE RATCHET									
MAX. TORQUE (NM)	SQUARE DRIVE (IN.)	SPEED (RPM)	SCREW CAPACITY (MM)	WEIGHT (KG)	LENGTH (MM)	LEVEL VIBRATION (SEC2)	AIR CONS. (CFM)	REC. HOSE SIZE (IN.)	AIR INLET (IN.)
50	3/8" & 1/4"	300	9.5	0.49	137	2.3	3	3/8"	1/4"

- **807:** 3/8" MINI RATCHET
- **807-25:** 1/4" MINI RATCHET
- HIGH TORQUE AND COMPACT



TUNE-UP KIT CONTAINS SPARES NO.:
2, 9, 12, 14, 16, 19



808-15 & 808-15-25 3/8" & 1/4" LONG REACH RATCHET									
MAX. TORQUE (NM)	SQUARE DRIVE (IN.)	SPEED (RPM)	SCREW CAPACITY (MM)	WEIGHT (KG)	LENGTH (MM)	LEVEL VIBRATION (SEC2)	AIR CONS. (CFM)	REC. HOSE SIZE (IN.)	AIR INLET (IN.)
50	3/8" & 1/4"	200	10	1.4	388	5.7	4	3/8"	1/4"

- EXCLUSIVE AIRCAT DESIGN
- EXTENDED DRIVE SHAFT PROVIDES ACCESS FOR HARD TO REACH FASTENERS
- HIGH TORQUE AND COMPACT



TUNE-UP KIT CONTAINS SPARES NO.:
103, 105, 108, 205, 303, 304, 307



808-22 3/8" LONG REACH RATCHET									
MAX. TORQUE (NM)	SQUARE DRIVE (IN.)	SPEED (RPM)	SCREW CAPACITY (MM)	WEIGHT (KG)	LENGTH (MM)	LEVEL VIBRATION (SEC2)	AIR CONS. (CFM)	REC. HOSE SIZE (IN.)	AIR INLET (IN.)
90	3/8"	160	10	1.95	571	5.7	6	3/8"	1/4"

- HIGH GRADE MATERIALS AND ADDITIONAL SUPPORT BEARINGS PROVIDE RELIABILITY
- EXTENDED DRIVE SHAFT FOR HARD-TO-REACH FASTENERS.



TUNE-UP KIT CONTAINS SPARES NO.:
103, 105, 108, 205, 303, 304, 307



811 1/4" 30° FLEX HEAD RATCHET									
MAX. TORQUE (NM)	SQUARE DRIVE (IN.)	SPEED (RPM)	SCREW CAPACITY (MM)	WEIGHT (KG)	LENGTH (MM)	LEVEL VIBRATION (SEC2)	AIR CONS. (CFM)	REC. HOSE SIZE (IN.)	AIR INLET (IN.)
48	1/4"	240	1.31	0.85	247	4	4	3/8"	1/4"

- 3 POSITION FLEX HEAD DESIGN
- FEATHER TRIGGER FOR CONTROL
- PATENTED QUIET TUNED EXHAUST (76 DBA)



TUNE-UP KIT CONTAINS SPARES NO.:
7, 13, 14, 37, 38, 43, 44, 46

WHEN YOU HAVE REAL WORK TO DO...
GRAB AN AIRCAT.

PRECISION WITH RATCHET AIRCAT



WHEN YOU HAVE REAL WORK TO DO...
GRAB AN **AIRCAT**.

ACCESSORIES FOR RATCHETS & IMPACT WRENCHES

SHORT SOCKETS

H0082 1/2" Drive Metric Socket Set



11
PIECE

Socket sizes
12, 13, 14, 15, 16,
17, 18, 19, 21, 22,
24 mm

H0082-MM 1/2" Dr. Deep Impact Set



11
PIECE

Socket sizes
12, 13, 14, 15, 16,
17, 18, 19, 21, 22,
24 mm

H0086-1 3/4" Drive Metric Socket Set



8
PIECE

Socket sizes 24,
27, 29,
30, 32, 33,
36, 38mm

H0093-1 1" Dr Metric Socket Set 4pcs



8
PIECE

Socket sizes 24,
27, 29,
30, 32, 33,
36, 38mm

H0095 1" Dr Metric Socket Set



4
PIECE

Socket sizes 27,
30, 32, 33mm

UNIVERSAL JOINTS

3/8" SQUARE DRIVE
1/2" SQUARE DRIVE
3/4" SQUARE DRIVE
1" SQUARE DRIVE

PART NO.
UJ38
UJ12
UJ34
UJ1



ADAPTERS

3/8" female to 1/2" male
1/2" female to 3/8" male
1/2" female to 3/4" male
3/4" female to 1/2" male
3/4" female to 1" male
1" female to 3/4" male
1 1/2" female to 1" male

Part No.
SA38F12M
SA12F38M
SA12F34M
SA34F12M
SA34F1M
SA1F34M
SA112F1M



EXTENSION BARS

	3"	6"	8"	10"	12"
3/8" SQUARE DRIVE	EX383	EX386			
1/2" SQUARE DRIVE	EX123	EX126		EX1210	EX1212
3/4" SQUARE DRIVE		EX346	EX348	EX3410	EX3412
1" SQUARE DRIVE		EX16	EX18	EX110	EX112

SHORT SOCKET

3/8" Drive Metric

8mm	SM3808SD
9mm	SM3809SD
10mm	SM3810SD
11mm	SM3811SD
12mm	SM3812SD
13mm	SM3813SD
14mm	SM3814SD
15mm	SM3815SD

1/2" Drive Metric

10mm	SM1210SD
11mm	SM1211SD
12mm	SM1212SD
13mm	SM1213SD
14mm	SM1214SD
15mm	SM1215SD
16mm	SM1216SD
17mm	SM1217SD
18mm	SM1218SD
19mm	SM1219SD
20mm	SM1220SD
21mm	SM1221SD
22mm	SM1222SD
23mm	SM1223SD
24mm	SM1224SD
25mm	SM1225SD
26mm	SM1226SD
27mm	SM1227SD

3/4" Drive Metric

24mm	SM3424SD
26mm	SM3426SD
27mm	SM3427SD
28mm	SM3428SD
29mm	SM3429SD
30mm	SM3430SD
32mm	SM3432SD
33mm	SM3433SD
34mm	SM3434SD
35mm	SM3435SD
36mm	SM3436SD
38mm	SM3438SD

1" Drive Metric

27mm	SM127SD
28mm	SM128SD
29mm	SM129SD
30mm	SM130SD
32mm	SM132SD
33mm	SM133SD
34mm	SM134SD
35mm	SM135SD
36mm	SM136SD
37mm	SM137SD
38mm	SM138SD
41mm	SM141SD
46mm	SM146SD

DEEP SOCKET

3/8" Drive Metric

8mm	SM3808DD
9mm	SM3809DD
10mm	SM3810DD
11mm	SM3811DD
12mm	SM3812DD
13mm	SM3813DD
14mm	SM3814DD
15mm	SM3815DD

1/2" Drive Metric

10mm	SM1210DD
11mm	SM1211DD
12mm	SM1212DD
13mm	SM1213DD
14mm	SM1214DD
15mm	SM1215DD
16mm	SM1216DD
17mm	SM1217DD
18mm	SM1218DD
19mm	SM1219DD
20mm	SM1220DD
21mm	SM1221DD
22mm	SM1222DD
23mm	SM1223DD
24mm	SM1224DD
25mm	SM1225DD
26mm	SM1226DD
27mm	SM1227DD

3/4" Drive Metric

24mm	SM3424DD
26mm	SM3426DD
27mm	SM3427DD
28mm	SM3428DD
29mm	SM3429DD
30mm	SM3430DD
32mm	SM3432DD
33mm	SM3433DD
34mm	SM3434DD
35mm	SM3435DD
36mm	SM3436DD
38mm	SM3438DD

1" Drive Metric

27mm	SM127DD
28mm	SM128DD
29mm	SM129DD
30mm	SM130DD
32mm	SM132DD
33mm	SM133DD
34mm	SM134DD
35mm	SM135DD
36mm	SM136DD
37mm	SM137DD
38mm	SM138DD
41mm	SM141DD
46mm	SM146DD

3/8" & 1/2" SINGLE DEPTH SOCKETS



3/4" & 1" DOUBLE DEPTH SOCKETS



BOOTS

1056-XL-BB	Boot for AIRCAT 1056/1076
1150-BB	AC1150 Rubber Boot
1450-BB	Boot for AIRCAT 1450 USE
1600-THBR	1150-BB
1058-VXLBB	Boot for AIRCAT 1600
1059-VXLBB	Boot for AIRCAT AC1058-VXL
1178-VXLBB	Boot for AIRCAT AC1059-VXL
1778-VXLBB	Boot for AIRCAT AC1178-VXL
	Boot for AIRCAT AC1778-VXL



GRINDERS & CUT OFF TOOLS

The AIRCAT® line of angle grinders and cutting tools combines innovative design with user comfort, featuring our patented internal silencing technology for a quieter work experience. The ergonomically crafted AIRCAT® trigger ensures light, practical operation, setting a new standard in ease of use. Designed for precision, these tools offer low operational deviation and enhanced durability, delivering consistent, reliable performance that lasts.



WHICH GEAR TYPE TO CHOOSE FOR YOUR GRINDER?

- **DIRECT GEAR:** Ideal for economical and lightweight grinders, prioritizing simplicity and efficiency for less demanding tasks.
- **BEVEL GEAR:** The best choice for versatile applications, such as angle grinders, offering a balance of durability and ergonomics for a variety of tasks.
- **SPIRAL BEVEL GEAR:** Perfect for heavy-duty industrial applications, delivering high performance, increased torque, and smooth operation.



WHEN YOU HAVE REAL WORK TO DO...
GRAB AN **AIRCAT**.

GRINDERS & CUT OFF TOOLS



6200

COMPOSITE STRAIGHT MINI DIE GRINDER

SPEED (RPM)	MOTOR (HP)	COLLET SIZE (MM)	GEARS	EXHAUST	WEIGHT (KG)	LENGTH (MM)	LEVEL VIBRATION (SEC2)	AIR CONS. (CFM)	REC. HOSE SIZE (IN.)
20.000	0.40	6	DIRECT DRIVE	REAR	0.40	165	2.9	4	3/8"

- COLLET OPTION: 1/8", 1/4", 3MM & 8MM
- FEATHER TRIGGER FOR BETTER SPEED CONTROL
- ERGONOMICALLY DESIGNED HOUSING



TUNE-UP KIT CONTAINS SPARES NO.:
7, 9, 12, 13, 14, 15, 16, 19, 27, 32



6201

COMPOSITE STRAIGHT MINI DIE GRINDER

SPEED (RPM)	MOTOR (HP)	COLLET SIZE (MM)	GEARS	EXHAUST	WEIGHT (KG)	LENGTH (MM)	LEVEL VIBRATION (SEC2)	AIR CONS. (CFM)	REC. HOSE SIZE (IN.)
20.000	0.50	6	DIRECT DRIVE	REAR	0.49	215	3.1	6	3/8"

- COLLET OPTION: 1/8", 1/4", 3MM & 8MM
- PATENTED QUIET TUNED EXHAUST (82 DBA)
- SUPERIOR STEEL GRADE INTERNAL BEARINGS FOR LONGER LIFE



TUNE-UP KIT CONTAINS SPARES NO.:
7, 8, 11, 12, 15, 16, 19, 20, 29, 32



6205

1/4" MINI DIE GRINDER

SPEED (RPM)	MOTOR (HP)	COLLET SIZE (MM)	GEARS	EXHAUST	WEIGHT (KG)	LENGTH (MM)	LEVEL VIBRATION (SEC2)	AIR CONS. (CFM)	REC. HOSE SIZE (IN.)
25.000	0.3	6	DIRECT DRIVE	REAR	0.75	121	0.5	4	3/8"

- COLLET OPTION: 1/8", 1/4", 3MM & 8MM
- SUPERIOR STEEL GRADE INTERNAL BEARINGS FOR LONGER LIFE
- SUPER COMPACT DESIGN FOR TIGHT SPACES



TUNE-UP KIT CONTAINS SPARES NO.:
6, 8, 10, 12, 16, 24

NEW



6210

COMPOSITE STRAIGHT DIE GRINDER EXTENDED SHANK

SPEED (RPM)	MOTOR (HP)	COLLET SIZE (MM)	GEARS	EXHAUST	WEIGHT (KG)	LENGTH (MM)	LEVEL VIBRATION (SEC2)	AIR CONS. (CFM)	REC. HOSE SIZE (IN.)
20.000	0.50	6	DIRECT DRIVE	REAR	1.13	342	3.1	6	3/8"

- COLLET OPTION: 1/8", 1/4", 3MM & 8MM
- FEATHER TRIGGER FOR BETTER SPEED CONTROL
- EXTENDED HEAD TO REACH IN TIGHT SPOTS



TUNE-UP KIT CONTAINS SPARES NO.:
24, 28, 31, 35, 36



6225

0.5 HP STRAIGHT DIE GRINDER

SPEED (RPM)	MOTOR (HP)	WHEEL SIZE (MM)	GEARS	EXHAUST	WEIGHT (KG)	LENGTH (MM)	LEVEL VIBRATION (SEC2)	AIR CONS. (CFM)	REC. HOSE SIZE (IN.)
22.000	0.5	6	DIRECT DRIVE	REAR	0.6	177	0.5	3.5	3/8"

- COLLET OPTION: 1/8", 1/4", 3MM & 8MM
- HIGH QUALITY 3-PIECE PRECISION COLLET
- BUILT-IN SILENCING REDUCES NOISE LEVELS



TUNE-UP KIT CONTAINS SPARES NO.:
6, 10, 12, 17

NEW



NEW

6245 0.5 HP ANGLE DIE GRINDER									
SPEED (RPM)	MOTOR (HP)	WHEEL SIZE (MM)	GEARS	EXHAUST	WEIGHT (KG)	LENGTH (MM)	LEVEL VIBRATION (SEC2)	AIR CONS. (CFM)	REC. HOSE SIZE (IN.)
20,000	0.5	6	SPIRAL BEVEL	REAR	0.45	177	0.6	3.5	3/8"

- COLLET OPTION: 1/8", 1/4", 3MM & 8MM
- BUILT-IN SILENCING REDUCES NOISE LEVELS
- PRECISION BEARING REDUCES VIBRATION AND SPINDLE RUN OUT



TUNE-UP KIT CONTAINS SPARES NO.:
6,10,12,17,18



NEW

6250 1/4" MINI ANGLE DIE GRINDER									
SPEED (RPM)	MOTOR (HP)	WHEEL SIZE (MM)	GEARS	EXHAUST	WEIGHT (KG)	LENGTH (MM)	LEVEL VIBRATION (SEC2)	AIR CONS. (CFM)	REC. HOSE SIZE (IN.)
18,000	0.3	6	SPIRAL LEVEL	REAR	0.45	127	2.5	4	3/8"

- COLLET OPTION: 1/8", 1/4", 3MM & 8MM
- TOOL WILL ALSO ACCOMMODATE 2" ROL-LOC SANDING PAD
- SUPERIOR STEEL GRADE INTERNAL BEARINGS FOR LONGER LIFE



TUNE-UP KIT CONTAINS SPARES NO.:
6,8,10,12,16,22,25,33



6255 COMPOSITE ANGLE DIE GRINDER									
SPEED (RPM)	MOTOR (HP)	COLLET SIZE (MM)	GEARS	EXHAUST	WEIGHT (KG)	LENGTH (MM)	LEVEL VIBRATION (SEC2)	AIR CONS. (CFM)	REC. HOSE SIZE (IN.)
20,000	0.40	6	SPIRAL LEVEL	REAR	0.49	177	2.5	4.2	3/8"

- COLLET OPTION: 1/8", 1/4", 3MM & 8MM
- MOST COMFORTABLE TRIGGER IN THE INDUSTRY
- EXCELLENT FOR HIGH SPEED BLENDING, SMOOTHING, PORTING AND DEBURRING IN CONFINED AREAS



TUNE-UP KIT CONTAINS SPARES NO.:
6, 8, 13, 21, 26, 29, 30, 31, 32



6260 COMPOSITE 1.0 HP STRAIGHT DIE GRINDER									
SPEED (RPM)	MOTOR (HP)	COLLET SIZE (MM)	GEARS	EXHAUST	WEIGHT (KG)	LENGTH (MM)	LEVEL VIBRATION (SEC2)	AIR CONS. (CFM)	REC. HOSE SIZE (IN.)
20,000	1.0	6	DIRECT DRIVE	REAR	0.54	235	2.3	6	3/8"

- COLLET OPTION: 1/8", 1/4", 3MM & 8MM
- SUPERIOR STEEL GRADE INTERNAL BEARINGS FOR LONGER LIFE
- FEATHER TRIGGER FOR BETTER SPEED CONTROL



TUNE-UP KIT CONTAINS SPARES NO.:
7, 8, 12, 16, 21, 25, 26, 29, 35



6265 6MM ANGLED 1.0 HP COMPOSITE DIE GRINDER									
SPEED (RPM)	MOTOR (HP)	COLLET SIZE (MM)	GEARS	EXHAUST	WEIGHT (KG)	LENGTH (MM)	LEVEL VIBRATION (SEC2)	AIR CONS. (CFM)	REC. HOSE SIZE (IN.)
20,000	1.0	6	SPIRAL BEVEL	REAR	0.54	235	2.9	6	3/8"

- COLLET OPTION: 1/8", 1/4", 3MM & 8MM
- INCLUDES 1 PC EACH 2 & 3B ROLOC® STYLE BACKING PADS
- PRECISION BEVEL GEARS FOR RELIABILITY



TUNE-UP KIT CONTAINS SPARES NO.:
7, 8, 12, 16, 21, 25, 26, 29, 35

GRINDERS & CUT OFF TOOLS



6270

6MM EXTENDED STRAIGHT 1 HP COMPOSITE DIE GRINDER

SPEED (RPM)	MOTOR (HP)	COLLET SIZE (MM)	GEARS	EXHAUST	WEIGHT (KG)	LENGTH (MM)	LEVEL VIBRATION (SEC2)	AIR CONS. (CFM)	REC. HOSE SIZE (IN.)
20.000	1.0	6	DIRECT DRIVE	REAR	1.4	359	2.5	4.2	3/8"

- COLLET OPTION: 1/8", 1/4", 3MM & 8MM
- LIMITED SPACE APPLICATIONS
- PATENTED SILENCING TECHNOLOGY REDUCES NOISE TO (80 DBA)



TUNE-UP KIT CONTAINS SPARES NO.:
11, 20, 24, 33, 35, 36, 41



6275-A

4" | COMPOSITE INSIDE CUT-OFF TOOL

SPEED (RPM)	MOTOR (HP)	WHEEL SIZE (IN.)	COLLET / SPINDLE SIZE (MM)	EXHAUST	WEIGHT (KG)	LENGTH (MM)	LEVEL VIBRATION (SEC2)	AIR CONS. (CFM)	REC. HOSE SIZE (IN.)
14.000	1.0	4"	CUTTING CAPACITY 3/4 ROLLED STEEL / 18 GAUGE	REAR	1.7	393	3.8	6	3/8"

- SAFETY LOCK-OFF- THROTTLE
- ONE-PIECE HOUSING REDUCES MAINTENANCE COSTS
- LEFT OR RIGHT-HAND ASSIST HANDLE POSITIONS



TUNE-UP KIT CONTAINS SPARES NO.:
6, 8, 9, 11, 16, 50, 53, 60



6280

0.75 HP ANGLE DIE GRINDER WITH SPINDLE LOCK

SPEED (RPM)	MOTOR (HP)	COLLET SIZE (MM)	GEARS	EXHAUST	WEIGHT (KG)	LENGTH (MM)	LEVEL VIBRATION (SEC2)	AIR CONS. (CFM)	REC. HOSE SIZE (IN.)
18.000	0.75	6	BEVEL GEARS	REAR	0.82	177	2.5	4.1	3/8"

- COLLET OPTION: 1/8", 1/4", 3MM & 8MM
- SPINDLE LOCK FEATURE FOR EASY ACCESSORY CHANGE
- ERICKSON® STYLE PRECISION COLLET



TUNE-UP KIT CONTAINS SPARES NO.:
2, 3, 10, 11, 17, 20, 26, 32



NEW

6281

0.75 HP ANGLE DISC SANDER WITH SPINDLE LOCK

SPEED (RPM)	MOTOR (HP)	COLLET SIZE / WHEEL SIZE (IN.)	GEARS	EXHAUST	WEIGHT (KG)	LENGTH (MM)	LEVEL VIBRATION (SEC2)	AIR CONS. (CFM)	REC. HOSE SIZE (IN.)
18.000	0.75	1/4" x 20"	BEVEL GEARS	REAR	0.86	190	2.5	4.1	3/8"

- SPEED CONTROL SWITCH ON TOP FOR BETTER CONTROL
- LOW NOISE ONLY (79 DBA)
- BUILT-IN 1/4" SPINDLE REDUCES TOOL HEIGHT



TUNE-UP KIT CONTAINS SPARES NO.:
11, 12, 14, 19



6285

0.75 HP STRAIGHT DIE GRINDER WITH SPINDLE LOCK

SPEED (RPM)	MOTOR (HP)	COLLET SIZE (MM)	GEARS	EXHAUST	WEIGHT (KG)	LENGTH (MM)	LEVEL VIBRATION (SEC2)	AIR CONS. (CFM)	REC. HOSE SIZE (IN.)
23.000	0.75	6	DIRECT DRIVE	REAR	0.64	177	2.5	4	3/8"

- COLLET OPTION: 1/8", 1/4", 3MM & 8MM
- ERICKSON® STYLE PRECISION COLLET
- OVER-MOLD COMPOSITE HANDLE AND GRIP FOR COMFORT



TUNE-UP KIT CONTAINS SPARES NO.:
2, 3, 5, 10, 11, 12, 18, 20, 26.



6290

0.75 HP REVERSIBLE STRAIGHT DIE GRINDER

SPEED (RPM)	MOTOR (HP)	COLLET SIZE (MM)	GEARS	EXHAUST	WEIGHT (KG)	LENGTH (MM)	LEVEL VIBRATION (SEC2)	AIR CONS. (CFM)	REC. HOSE SIZE (IN.)
20.000	0.75	6	DIRECT DRIVE	REAR	0.64	177	2.5	4	3/8"

- COLLET OPTION: 1/8", 1/4", 3MM & 8MM
- OVER-MOLD COMPOSITE HANDLE AND GRIP FOR COMFORT
- FORWARD/REVERSE SWITCH ON TOP FOR EASY DIRECTION CHANGES



TUNE-UP KIT CONTAINS SPARES NO.:
4, 13, 18, 20, 22, 28, 37



6295

115° ANGLE DIE GRINDER

SPEED (RPM)	MOTOR (HP)	COLLET SIZE (MM)	GEARS	EXHAUST	WEIGHT (KG)	LENGTH (MM)	LEVEL VIBRATION (SEC2)	AIR CONS. (CFM)	REC. HOSE SIZE (IN.)
18.000	0.6	6	BEVEL GEARS	REAR	0.73	203	4.5	6	3/8"

- COLLET OPTION: 1/8", 1/4", 3MM & 8MM
- ERGONOMIC COMPOSITE OVER MOLD GRIP PROVIDES COMFORT
- SPINDLE LOCK FEATURE FOR EASY ACCESSORY CHANGE



TUNE-UP KIT CONTAINS SPARES NO.:
2, 10, 11, 12, 17, 23

NEW



6340

4-1/2" | ANGLED COMPOSITE GRINDER

SPEED (RPM)	MOTOR (HP)	WHEEL SIZE (IN.)	GEARS	EXHAUST	WEIGHT (KG)	LENGTH (MM)	LEVEL VIBRATION (SEC2)	AIR CONS. (CFM)	REC. HOSE SIZE (IN.)
11.000	1.0	4.5"	SPIRAL BEVEL	REAR	1.02	222	1.2	6	3/8"

- SPINDLE LOCK FOR EASY WHEEL CHANGE
- 360° ROTATIONAL EXHAUST
- MULTI POSITIONAL ROTATIONAL GUARD IMPROVES ACCESS



TUNE-UP KIT CONTAINS SPARES NO.:
2, 11, 20, 26, 42



6345

0.6" | DECAL/PINSTRIP REMOVAL TOOL

SPEED (RPM)	MOTOR (HP)	SPINDLE THREAD SIZE (IN.)	EXHAUST	WEIGHT (KG)	LENGTH (MM)	LEVEL VIBRATION (SEC2)	AIR CONS. (CFM)	NOISE LEVEL (dB(A))	REC. HOSE SIZE (IN.)
2.600	0.6	5/16 x 24"	REAR	0.98	218	0.7	4	80	3/8"

- NEW GENERATION TOOLS
- SPINDLE LOCK FEATURE FOR EASY ACCESSORY CHANGE
- ROTATIONAL REAR EXHAUST



TUNE-UP KIT CONTAINS SPARES NO.:
1, 2, 10, 12, 17

NEW



6380

2.3 HP 5" HEAVY DUTY ANGLE GRINDER

SPEED (RPM)	MOTOR (HP)	WHEEL SIZE (IN.)	GEARS	EXHAUST	WEIGHT (KG)	LENGTH (MM)	LEVEL VIBRATION (SEC2)	AIR CONS. (CFM)	REC. HOSE SIZE (IN.)
12.000	2.3	5"	SPIRAL BEVEL	REAR	1.80	232	5.2	10	3/8"

- SPINDLE LOCK FOR EASY WHEEL CHANGE
- ERGONOMICALLY DESIGNED COMPOSITE GRIP
- VIBRATION-DAMPED HANDLE AND TRIGGER FOR COMFORT



TUNE-UP KIT CONTAINS SPARES NO.:
3, 12, 14, 19

NEW

WHEN YOU HAVE REAL WORK TO DO...
GRAB AN AIRCAT.

GRINDERS & CUT OFF TOOLS



6515		0.5 HP 3" CUT-OFF TOOL							
SPEED (RPM)	MOTOR (HP)	WHEEL SIZE (IN)	GEARS	EXHAUST	WEIGHT (KG)	LENGTH (MM)	LEVEL VIBRATION (SEC2)	AIR CONS. (CFM)	REC. HOSE SIZE (IN.)
22.000	0.5	3"	DIRECT DRIVE	REAR	0.82	193	0.8	3.5	3/8"

- CUT CAPACITY:
- STEEL (US STANDARD): ≈ 1.214 MM
- STAINLESS STEEL: ≈ 1.27 MM
- ALUMINUM: ≈ 1.024 MM



TUNE-UP KIT CONTAINS SPARES NO.:
6,10,12,17



6520		3/8" COMPOSITE REVERSIBLE CUT-OFF TOOL							
SPEED (RPM)	MOTOR (HP)	WHEEL SIZE (IN)	GEARS	CUTTING CAPACITY	WEIGHT (KG)	LENGTH (MM)	LEVEL VIBRATION (SEC2)	AIR CONS. (CFM)	REC. HOSE SIZE (IN.)
18.000	0.50	3"	SINGLE REDUCTION	3/4" ROLLED STEEL / 18 GAUGE	0.82	241	1.8	6	3/8"

- STEEL (US STANDARD): 18 GAUGE ≈ 1.214 MM
- STAINLESS STEEL: 18 GAUGE ≈ 1.27 MM
- ALUMINUM: 18 GAUGE ≈ 1.024 MM



TUNE-UP KIT CONTAINS SPARES NO.:
2, 3, 13, 19, 22, 38, 45

UNMATCHED POWER AND PRECISION:
AIRCAT® GRINDERS AND CUT-OFF TOOLS

Aircat® grinders and cut-off tools combine impressive power with innovative design, providing a superior work experience. Featuring patented internal silencing technology, these tools create a quieter environment without compromising performance, reducing noise impact during use. The ergonomically crafted Aircat® trigger ensures light, easy operation, enabling professionals to work for extended periods without fatigue.

POV



TUNE-UP KIT CONTAINS SPARES NO.:
2, 3, 5, 10, 11, 12, 17, 26



6530 FLEX HEAD CUT OFF TOOL									
SPEED (RPM)	MOTOR (HP)	WHEEL SIZE (IN)	GEARS	CUTTING CAPACITY	WEIGHT (KG)	LENGTH (MM)	LEVEL VIBRATION (SEC2)	AIR CONS. (CFM)	REC. HOSE SIZE (IN.)
18,000	0.5	3"	DIRECT DRIVE	3/4" ROLLED STEEL / 18 GAUGE	1.18	223	1.9	6	3/8"

- 3-POSITION FLEXIBLE HEAD
- STEEL (US STANDARD): 18 GAUGE \approx 1.214 MM
- STAINLESS STEEL: 18 GAUGE \approx 1.27 MM
- ALUMINUM: 18 GAUGE \approx 1.024 MM



TUNE-UP KIT CONTAINS SPARES NO.:
7, 10, 14, 20, 26, 28, 33, 35, 37



6560 4" 1 HP COMPOSITE CUT OFF TOOL									
SPEED (RPM)	MOTOR (HP)	WHEEL SIZE (IN)	GEARS	CUTTING CAPACITY	WEIGHT (KG)	LENGTH (MM)	LEVEL VIBRATION (SEC2)	AIR CONS. (CFM)	REC. HOSE SIZE (IN.)
14,000	1.0	4"	SINGLE REDUCTION	3/4" ROLLED STEEL / 18 GAUGE	0.8	241	1.8	4.2	3/8"

- STEEL (US STANDARD): 18 GAUGE \approx 1.214 MM
- STAINLESS STEEL: 18 GAUGE \approx 1.27 MM
- ALUMINUM: 18 GAUGE \approx 1.024 MM



TUNE-UP KIT CONTAINS SPARES NO.:
7, 10, 14, 19, 25, 26, 28, 37

VER



Precision is at the heart of every Aircat® tool, setting a new standard for quality. With low operational deviation and enhanced durability, they deliver consistent, reliable performance over time. Whether for cutting, grinding, or other applications, Aircat® tools are the perfect choice for those seeking power, reliability, and comfort in every task.

WHEN YOU HAVE REAL WORK TO DO...
GRAB AN AIRCAT.

ACCESSORIES FOR GRINDERS & CUTTERS



BELTS



DISCS
BRISTLES



SANDING DISCS



BASE
PADS



SURFACE
CONDITIONING
DISCS

BELT SANDERS

PART NUMBER	DESCRIPTION
131403-120	SANDING DISC 120 (1-1/4") PKT OF 10
131403-180	SANDING DISC 180 (1-1/4") PKT OF 10
131403-320	SANDING DISC 320 (1-1/4") PKT OF 10
13132-600	SANDING DISC 600 (1-1/4") PKT OF 10

SANDING DISC (1-1/4")

PART NUMBER	DESCRIPTION
8704 +GRIT	30 MM SANDING BELTS - GRIT SIZE 40, 50, 60, 80, 100, 120 AND 150
8764, 5764 +GRIT	10 MM SANDING BELTS - GRIT SIZE 40, 50, 60, 80, 100, 120 AND 150
8765, 5765 +GRIT	20 MM SANDING BELTS - GRIT SIZE 40, 50, 60, 80, 100, 120 AND 150
5765 +GRIT	60 MM SANDING BELTS - GRIT SIZE 40, 60, 80, 100, 120 AND 150

STANDARD COLLET

CLT008	8 MM COLLET
CLT006	6MM COLLET
CLT003	3 MM COLLET
CLT018	1/8" COLLET
CLT014	1/4" COLLET



ERICKSON COLLETS

CLTER008	8MM COLLET
CLTER006	6MM COLLET
CLTER003	3MM COLLET
CLTER014	1/4" COLLET

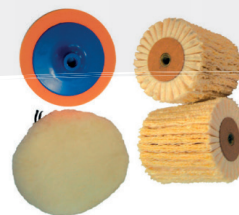


3M ROLOC

20004	ROLOC 50 GRITS BRISTLE DISC GREEN
20005	ROLOC 80 GRITS YELLOW BRISTLE DISC
20006	ROLOC 120 GRITS BRISTLE DISC WHITE

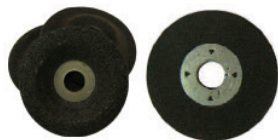
WOOL POLISHING

131210-1	2' WOOL POLISHING BERET.
H0067	7 INCH LAMBSWOOL CAP
H0068	8 INCH LAMBSWOOL CAP



CUT-OFF DISCS

5L-3011B39N	4' CUTTING DISC
H0069N	3' CUTTING DISC



SISAL/SURF

H0107	SISAL POLISHING MOP
H0SCF	2' BLUE SURF. THIN DISC COND.

DUST COLLECTOR / HOLDER

PT201	DUST COLLECTOR
0308C025	2" DISC HOLDER / BACKING PAD

SCRAPING BLADE

13122	SCRAPING BLADE 35MM
13123	SCRAPING BLADE 45MM

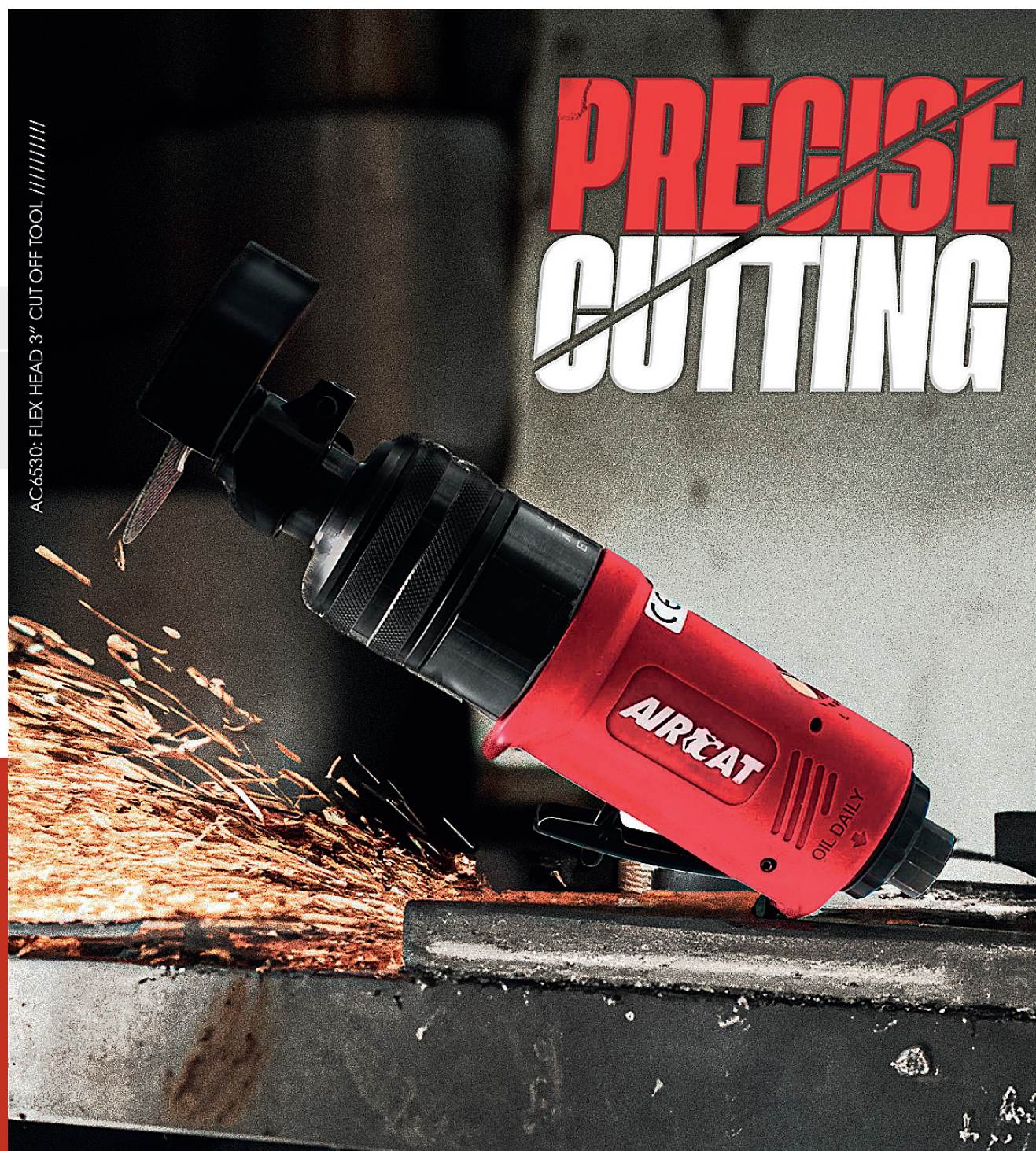
WHEN YOU HAVE REAL WORK TO DO...
GRAB AN **AIRCAT**.

SANDING DISC (2")

PART NUMBER	DESCRIPTION
HO-P120	120 GRIT SAND DISC 2'
HO-P24	24 GRIT SAND DISC 2'
HO-P36	2' SAND DISC WITH 36 GRAINS
HO-P60	SAND DISC 60 GRIT 2'
HO-P80	80 GRIT 2' SAND DISC

SANDING DISC (1-1/2")

PART NUMBER	DESCRIPTION
131403-120	SANDING DISC 120 (1-1/2") PKT OF 10
131403-320	SANDING DISC 320 (1-1/2") PKT OF 10
131403-600	SANDING DISC 600 (1-1/2") PKT OF 10



DRILLS

Aircat Drills deliver unmatched quality, designed for precision and durability. Engineered with advanced ergonomics and a powerful motor, they ensure superior performance and long-lasting reliability in any demanding work environment. With a focus on reducing noise, vibration, and operator fatigue, Aircat Drills provide a smooth, efficient drilling experience that professionals can rely on day after day. From precise control to enhanced comfort, Aircat Drills are the ideal choice for high-quality results every time.



DRILLS



4337 3/8" | ANGLE DRILL - CHUCK & KEY - KEYLESS

SPEED (RPM)	MOTOR (HP)	CHUCK SIZE (IN.)	GEARS	SPINDLE THREAD SIZE (IN.)	WEIGHT (KG)	LENGTH (MM)	LEVEL VIBRATION (SEC2)	AIR CONS. (CFM)	REC. HOSE SIZE (IN.)
1.600	0.75	3/8"	SPIRAL BEVEL	3/8" x 24	1.08	210	2.1	6	3/8"

- PRECISION SPIRAL BEVEL GEARS INCREASE RELIABILITY
- CONVENIENTLY POSITIONED FORWARD/REVERSE KNOB
- FITTED WITH KEYED CHUCK



TUNE-UP KIT CONTAINS SPARES NO.:
2, 3, 5, 18, 20, 22, 26, 28, 30, 39, 43



4338 3/8" | CHUCK & KEY - KEYLESS

SPEED (RPM)	MOTOR (HP)	CHUCK SIZE (IN.)	GEARS	SPINDLE THREAD SIZE (IN.)	WEIGHT (KG)	LENGTH (MM)	LEVEL VIBRATION (SEC2)	AIR CONS. (CFM)	REC. HOSE SIZE (IN.)
1.800	0.70	3/8"	PLANETARY	3/8" x 24	1.13	177	1.7	6	3/8"

- FITTED WITH JACOBS® KEYLESS CHUCK
- FEATHER TRIGGER FOR BETTER SPEED CONTROL
- PATENTED ERGONOMICALLY DESIGNED HANDLE



TUNE-UP KIT CONTAINS SPARES NO.:
5, 16, 17, 24, 25, 27, 35



4450 1/2" | COMPOSITE DRILL - CHUCK & KEY - KEYLESS

SPEED (RPM)	MOTOR (HP)	CHUCK SIZE (IN.)	GEARS	SPINDLE THREAD SIZE (IN.)	WEIGHT (KG)	LENGTH (MM)	LEVEL VIBRATION (SEC2)	AIR CONS. (CFM)	REC. HOSE SIZE (IN.)
400	0.70	1/2"	PLANETARY	3/8" x 24	1	203	1	6	3/8"

- FITTED WITH KEYED CHUCK
- TRIGGER MOUNTED REVERSE FOR INSTANT CHANGE OF DIRECTION
- FEATHER TRIGGER FOR BETTER SPEED CONTROL



TUNE-UP KIT CONTAINS SPARES NO.:
5, 18, 20, 22, 27, 28, 29



4451 1/2" | COMPOSITE DRILL - CHUCK & KEY - KEYLESS

SPEED (RPM)	MOTOR (HP)	CHUCK SIZE (IN.)	GEARS	SPINDLE THREAD SIZE (IN.)	WEIGHT (KG)	LENGTH (MM)	LEVEL VIBRATION (SEC2)	AIR CONS. (CFM)	REC. HOSE SIZE (IN.)
400	0.70	1/2"	PLANETARY	3/8" x 24	1.8	235	2.5	9	3/8"

- ENHANCED ERGONOMICS
- QUICK REVERSAL
- POWERFUL MOTOR



TUNE-UP KIT CONTAINS SPARES NO.:
10, 12, 13, 22, 25, 26, 27, 32



3/8" CHUCK AND KEY



3/8" KEYLESS



1/2" CHUCK AND KEY



1/2" KEYLESS

DRILL CHUCKS 3/8"

PART NUMBER	DRILL CHUCKS
H0019	3/8" CHUCK AND KEY
H0019K	3/8" KEYLESS CHUCK
H0023	3/8" CHUCK KEY
52030	3/8" INDUSTRIAL KEYLESS CHUCK METAL

DRILL CHUCKS 5/8"

PART NUMBER	DRILL CHUCKS
H0122	5/8" TAPERED SPANNER AND CHUCK FOR HP17RD

DRILL CHUCKS 1/2"

PART NUMBER	DRILL CHUCKS
H0020	1/2" CHUCK AND KEY
H0020K	1/2" KEYLESS CHUCK
H0024	1/2" CHUCK KEY

DRILL CHUCKS 1/4"

PART NUMBER	DRILL CHUCKS
99005	1/4" HEX SLIP SHANK

HAMMERS



AIRCAT hammers are renowned for their exceptional quality and durability. Engineered with advanced technology, these tools offer superior power and precision. From their ergonomic design to their quiet operation, AIRCAT hammers are a testament to innovation and craftsmanship. Whether you're a seasoned professional or a DIY enthusiast, AIRCAT delivers the performance and reliability you need to get the job done.



WHEN YOU HAVE REAL WORK TO DO...
GRAB AN **AIRCAT**.

HAMMERS



5100-A & 5100-A-T		0.401 SHANK COMPOSITE MEDIUM STROKE AIR HAMMER							
SPEED (BPM)	STROKES (SPM)	SHANK OPENING	RETAINER	VALVE	WEIGHT (KG)	LENGTH (MM)	LEVEL VIBRATION (SEC2)	AIR CONS. (CFM)	REC. HOSE SIZE (IN.)
3.000	3.000	0.401"	SAFETY LOCK	PLATE	1.49	193	4.2	6	3/8"

- **MODEL 5100-A INCLUDES:** 5 CHISEL TYPE, FLAT CHISEL, POINTED CHISEL, FORGED (SPLIT-END), NARROW FLAT, WIDE FLAT
- LOW VIBRATION LEVEL
- ROUND SHANK



TUNE-UP KIT CONTAINS SPARES NO.:
1,10,17,22



5200-A & 5200-A-T		0.401 SHANK COMPOSITE LONG STROKE AIR HAMMER							
SPEED (BPM)	STROKES (SPM)	SHANK OPENING	RETAINER	VALVE	WEIGHT (KG)	LENGTH (MM)	LEVEL VIBRATION (SEC2)	AIR CONS. (CFM)	REC. HOSE SIZE (IN.)
2.100	2.100	0.401"	SAFETY LOCK	PLATE	1.99	279	4.2	6	3/8"

- **MODEL AC5200-A INCLUDES:** 4 PC. CHISEL SET / 902 | 907 | 909 | 910
- HEAVY-DUTY BALL-LOCK RETAINER FOR SAFETY AND RELIABILITY
- PATENTED AIRCAT SILENCING TECHNOLOGY
- ROUND SHANK



TUNE-UP KIT CONTAINS SPARES NO.:
1,10,16,17



5250A-T		0.401" SUPER DUTY AIR HAMMER							
SPEED (BPM)	STROKES (SPM)	SHANK OPENING	RETAINER	VALVE	WEIGHT (KG)	LENGTH (MM)	LEVEL VIBRATION (SEC2)	AIR CONS. (CFM)	REC. HOSE SIZE (IN.)
2.500	2.500	0.401"	QUICK CHANGE	PLATE	2.44	241	7.7	4.2	3/8"

- INCLUDES QUICK CHANGE CHISEL RETAINER
- 4 POSITIONS
- VARIABLE SPEED TRIGGER
- ROUND SHANK



TUNE-UP KIT CONTAINS SPARES NO.:
9,10,19,22,25,30,31,32,33,34,35,36



5300-A & 5300-A-T		SUPER DUTY 0.498" SHANK AIR HAMMER KIT							
SPEED (BPM)	STROKES (SPM)	SHANK OPENING	RETAINER	VALVE	WEIGHT (KG)	LENGTH (MM)	LEVEL VIBRATION (SEC2)	AIR CONS. (CFM)	REC. HOSE SIZE (IN.)
1.760	1.760	0.498"	QUICK CHANGE	PLATE	2.08	227	17.4	6	3/8"

- **MODEL AC5300-A INCLUDES:** 4 PC. CHISEL SET / 902 | 907 | 909 | 910
- QUICK CHANGE CHISEL RETAINER
- ERGONOMICALLY DESIGNED
- ROUND SHANK



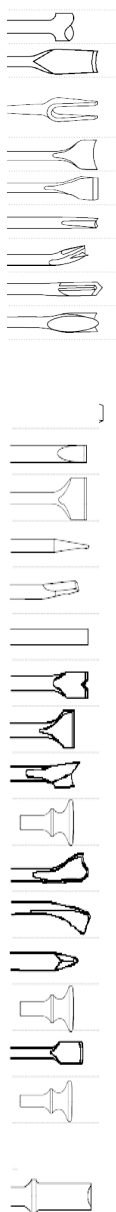
TUNE-UP KIT CONTAINS SPARES NO.:
7,12,13,15,16,19

FOR PROFESSIONALS

HAMMERS ACCESSORIES

0.401" ROUND SHANK

PART NO	ROUND SHANK
901	0.401" Shank Tie Rod Tool
902	Weld Splitter
903-3/4	Fork Chisel 3/4"
904	Bushing Remover
905	Wide Scraper
906	Bushing Splitter
907	Claw Ripper
908	Muffler Cutter
909	Panel Cutter
910	Flat Chisel 7x3/4
910-1/2	Flat Chisel 7x1/2
910-11/2	Flat Chisel 7x1 1/2"
910-11	Flat Chisel 11x3/4
910-18	Flat Chisel 18x3/4
911	Tapered Punch
912	Rivet Cutter
913	Blank
914	Vee Chisel
H0096	1" Smoothing Hammer
H0097	1 3/4" Smoothing Hammer
922	Spoon Chisel
923	Single Edge Cutter
933	Muffler Cutter (inside)
934	Muffler Cutter (outside)
940	Moil Point
951	Five Chisel Pack
H0085	3/16" Round Rivet Snap
1604	1/4" Round Rivet Snap
1605	5/16" Round Rivet Snap
1606	5/16" Round Rivet Snap



HEAVY HAMMER CHISEL	ROUND SHK 0.680	HEX SHK 0.580
Blank Chisel 8" Long	301	302
Flat Chisel 1"x 9" Long	303	304
Moil Point 9" Long	313	314
Wide Flat 1 1/2" x 9" Long	325	326
Wide Flat 2" x 9" Long	323	324
Cape Chisel 9" Long	305	306
Round Nose Chisel 9" Long	307	308
Diamond Chisel 9" Long	309	310
Gouge Chisel 9" Long	337	338

0.498" ROUND SHANK

PART NO	ROUND SHANK
965	Shank Tie Rod Tool
968	Fork Chisel 1 1/4
955	Wide Scraper
964	Bushing Splitter
959	Panel Cutter
960	Flat Chisel 7x3/4
960-18	Flat Chisel 18x3/4
961	Tapered Punch
962	Rivet Cutter
963	Blank

0.401" Non Turn Shank

PART NO	ROUND SHANK
3114	Weld Splitter
3106	Wide Scraper
3105	Claw Ripper
3109	Panel Cutter
3102	Flat Chisel 7x3/4
3102-12	Flat Chisel 11x3/4
3102-18	Flat Chisel 18x3/4
3110	Tapered Punch
3103	Rivet Cutter
3101	Blank
3112	Spoon Chisel
3104	Spoon Chisel

WELD CHIPPER CHISELS - 1/2"

395	Blank Chisel 7" Long	3224	Diamond Chisel
396	3/4" Flat Chisel 7" OA	3225	Round Nose Chisel
397	Wide Chisel	3226	Cape Chisel Weld Flux
398	Angle Chisel	3201	Panel Cutter
399	Scraper		

CHISEL RETAINERS

300	Heavy Hammer Lockring (.580 Hex) UT8644H
512	Std. Spring Retainer (.401")
512-10	Std. Spring Retainer (.401") Pack of 10
513	Std. Spring Retainer (.498")
895	Beehive Spring (.401")
898	Beehive Spring (.498")
H0035	Safety Chuck Chisel Holder (.401")
H0045B	Std. Non-Turn Retainer(.401")

AIR SAWS, NIBBLERS & NEEDLES

For professionals who demand the best, AIRCAT air saws, nibblers, and needles are the ultimate choice. Engineered to increase productivity and reduce downtime, these tools are trusted by professionals across industries. Experience the difference of a tool that's designed to make your job easier and more efficient.



AIR SAWS, SAW BLADES AND NEEDLES



6330

NIBBLER

SPEED (BPM)	MOTOR (HP)	CUTTING CAPACITY	EXHAUST	WEIGHT (KG)	LENGTH (MM)	LEVEL VIBRATION (SEC2)	AIR CONS. (CFM)	REC. HOSE SIZE (IN.)	AIR INLET (IN.)
2.600	0.50	18 GAUGE	REAR	1.02	292	7.7	4	3/8"	1/4"

- INCLUDES AN ADDITIONAL PUNCH
- COMPOSITE HANDLE AND LEVER FOR COMFORT AND CONVENIENCE
- 360° REAR EXHAUST MUFFLER FOR ADJUSTABLE AIR DIRECTION



TUNE-UP KIT CONTAINS SPARES NO.:
2, 3, 7, 8, 11, 15, 16, 19, 21, 23, 31, 35



6350

LOW VIBRATION AIR SAW

SPEED (BPM)	MOTOR (HP)	CUTTING CAPACITY	EXHAUST	WEIGHT (KG)	LENGTH (MM)	LEVEL VIBRATION (SEC2)	AIR CONS. (CFM)	REC. HOSE SIZE (IN.)	AIR INLET (IN.)
9.500	0.45	3/16" STEEL PLATE - 18 GAUGE	REAR	0.51	203	2.5	4	3/8"	1/4"

- QUICK-CHANGE BLADE DESIGN UNIVERSAL COMPATIBILITY PATENTED RECIPROCATING CRANK MECHANISM
- INCLUDES: 18, 24, 32 TEETH POWER SAW BLADES



TUNE-UP KIT CONTAINS SPARES NO.:
8, 10, 13, 14, 21, 23, 26, 27, 32, 33, 34, 35, 37, 39



6355 -A

RECIPROCATING AIR SAW

SPEED (SPM)	MOTOR (HP)	CUTTING CAPACITY	EXHAUST	WEIGHT (KG)	LENGTH (MM)	LEVEL VIBRATION (SEC2)	AIR CONS. (CFM)	REC. HOSE SIZE (IN.)	AIR INLET (IN.)
5.000	0.45	1/4" THICK STEEL AND UP TO 3" STEEL TUBES	REAR	1.10	311	3.2	3.5	3/8"	1/4"

- QUICK-CHANGE BLADE DESIGN UNIVERSAL COMPATIBILITY PATENTED RECIPROCATING CRANK MECHANISM
- DUAL-SPEED DESIGN FOR CONTROL
- ACCEPT VARIOUS TYPE OF SAW BLADES



TUNE-UP KIT CONTAINS SPARES NO.:
2, 9, 10, 12, 14, 16, 17, 25, 27, 33

NEW



6390

COMPACT NEEDLE SCALER

SPEED (BPM)	EXHAUST	NEEDLES (MM)	WEIGHT (KG)	LENGTH (MM)	AIR CONS. (CFM)	REC. HOSE SIZE (IN.)	AIR INLET (IN.)
4.800	REAR	12 x 3	1.31	292	4	3/8"	1/4"

- COMPACT TO REACH SMALL AREAS
- IDEAL FOR SURFACE CLEAN-UP WORK



TUNE-UP KIT CONTAINS SPARES NO.:
2, 3, 5, 11, 13, 14, 16, 17, 19

NEW



NIBBLERS

PART NUMBER	NIBBLERS
RL136538	NIBBLER PUNCH FOR AC6330

AIRCAT 6350 BLADES

PART NUMBER	SAW BLADES
H0403-18	HIGH SPEED SAW BLADE 18 TPI
H0403-24	HIGH SPEED SAW BLADE 24 TPI
H0403-32	HIGH SPEED SAW BLADE 32 TPI



TYRE BUFFERS, RIVETER & SPRAY GUN

For professionals who settle for nothing less than excellence, AIRCAT's Tyre Buffers, Riveters, and Spray Guns are the go-to tools. These high-performance tools are engineered to optimize productivity and minimize downtime, delivering exceptional results across a variety of industries. Whether you're working on heavy-duty tyres, precise riveting, or smooth finishing with spray guns, AIRCAT tools are built to tackle demanding tasks with ease.





6400 COMPOSITE HIGH SPEED TYRE BUFFER / DRILL								
SPEED (RPM)	MOTOR (HP)	SPINDLE THREAD SIZE (IN.)	CHUCK SIZE (IN.)	WEIGHT (KG)	LENGTH (MM)	AIR CONS. (CFM)	REC. HOSE SIZE (IN.)	AIR INLET (IN.)
22.000	0.75	3/8 x 24"	3/8"	0.75	203	4	3/8"	1/4"

- ERGONOMIC MOLDED HANDLE
- LOW NOISE
- HIGH CONTROL



TUNE-UP KIT CONTAINS SPARES NO.:
2, 3, 10, 17, 18, 20, 26



6402 0.60 HP 2,600 RPM COMPOSITE TYRE BUFFER								
SPEED (RPM)	MOTOR (HP)	SPINDLE THREAD SIZE (IN.)	CHUCK SIZE (IN.)	WEIGHT (KG)	LENGTH (MM)	AIR CONS. (CFM)	REC. HOSE SIZE (IN.)	AIR INLET (IN.)
2.600	0.60	3/8 x 24"	5/16" INTERNAL HEX	0.79	228	3.5	3/8"	1/4"

- **AC6403:** 0.60 HP | 3,600 RPM | COMPOSITE TYRE BUFFER
- ERGONOMIC MOLDED HANDLE
- LOW NOISE
- COMFORTABLE



TUNE-UP KIT CONTAINS SPARES NO.:
2, 3, 8, 11, 16, 19, 24, 29, 31



NEW

6410 3/16" AIR HYDRAULIC RIVETER			
RIVET SIZES	REC. HOSE SIZE (IN.)	AIR INLET (IN.)	PULLING FORCE (KG)
3/8"	3/8"	1/4"	907

- **RIVET SIZES:**
 - 5/32 INCH \approx 3.97 MM
 - 3/16 INCH \approx 4.76 MM
- PROFESSIONAL-GRADE DESIGN SUITABLE FOR CONTINUOUS OPERATION

6420 1/4" AIR HYDRAULIC RIVETER			
RIVET SIZES	REC. HOSE SIZE (IN.)	AIR INLET (IN.)	PULLING FORCE (KG)
3/8"	3/8"	1/4"	1.678

- **RIVET SIZES:**
 - 3/16 INCH \approx 4.76 MM
 - 1/4 INCH \approx 6.35 MM
 - 3/16 INCH MONOBOLT \approx 4.76 MM MONOBOLT
 - 1/4 INCH MONOBOLT \approx 6.35 MM MONOBOLT



TUNE-UP KIT CONTAINS SPARES NO.:
2, 3, 8, 11, 16, 19, 24, 29, 31



NEW

6900 HVLP GRAVITY FEED SPRAY GUN - 1.4 MM					
WEIGHT (KG)	AIR CONS. (CFM)	OPERATING RANGE	STANDARD AIRCAP SET (MM)	AIR SUPPLY HOSE WIDTH	AIR INLET (IN.)
0.54	12.5	14-28 PSI	1.4	5/16"	1/4"

- SMOOTH/COMFORTABLE TRIGGER PULL
- INCLUDES GEN 1 QUICK TWIST-LOCK SPRAY GUN CUP ADAPTER
- HVLP SPRAY GUN FOR FINE FINISH PAINT ON CARS, INDUSTRY, AND WOODWORK



TUNE-UP KIT CONTAINS SPARES NO.:
3,4,6,15,16,20,29,42,44



NEW

6905 HVLP GRAVITY FEED SPRAY GUN - 1.7 MM					
WEIGHT (KG)	AIR CONS. (CFM)	OPERATING RANGE	STANDARD AIRCAP SET (MM)	AIR SUPPLY HOSE WIDTH	AIR INLET (IN.)
0.54	12.5	14-28 PSI	1.7	5/16"	1/4"

- HVLP TECHNOLOGY REDUCES PAINT WASTE AND AIR VOLUME
- STAINLESS STEEL NEEDLES FOR ULTIMATE RELIABILITY
- PRECISION BRASS SPRAY CAPS FOR PERFECT PATTERN



TUNE-UP KIT CONTAINS SPARES NO.:
3,4,6,15,16,20,29,42,44

SANDERS & POLISHERS



AIRCAT Sanders and Polishers deliver an exceptional blend of power and precision. Designed for high-speed sanding and polishing, these tools feature reduced vibration and long-lasting durability, making them ideal for various applications. Specially crafted sanding pads ensure smooth finishes and efficient material removal, while the ergonomic design minimizes user fatigue, allowing for comfortable, extended use.



SANDERS & POLISHERS



SHIPBUILDING



AUTOMOTIVE

CENTRAL VAC



6700-3-332CV

TUNE-UP KIT CONTAINS SPARES NO.:
3, 6, 12, 20, 21, 24, 31, 34, 36



6700-5-336CV

6700-6-332CV

6700-6-336CV

TUNE-UP KIT CONTAINS SPARES NO.:
3, 6, 14, 21, 24, 34, 37, 39
TUNE-UP KIT CONTAINS SPARES NO.:
3, 6, 12, 18, 22, 29, 30, 32, 37, 39

NON CENTRAL VAC



6700-3-332

6700-5-336

6700-6-332

6700-6-336

TUNE-UP KIT CONTAINS SPARES NO.:
3, 6, 14, 21, 24, 34, 37, 39
TUNE-UP KIT CONTAINS SPARES NO.:
3, 6, 12, 18, 22, 29, 30, 32, 37, 39



6700-1-332

TUNE-UP KIT CONTAINS SPARES NO.:
3, 6, 12, 20, 21, 24, 31, 34, 36, 43

SELF VAC



6700-6-332SV

6700-6-336SV

TUNE-UP KIT CONTAINS SPARES NO.:
3, 6, 20, 21, 24, 34, 37, 39
TUNE-UP KIT CONTAINS SPARES NO.:
3, 6, 20, 21, 24, 26, 32, 34, 37

JITTERBUG SANDER



6700-JBS-332

TUNE-UP KIT CONTAINS SPARES NO.:
2, 3, 8, 10, 12, 14, 15, 18, 20, 21

WHEN YOU HAVE REAL WORK TO DO...
GRAB AN **AIRCAT**.



NEW

6700-6-338
6700-6-338CV

TUNE-UP KIT CONTAINS SPARES NO.:
3, 6, 12, 20, 21, 24, 31, 34, 36
TUNE-UP KIT CONTAINS SPARES NO.:
3, 6, 12, 18, 20, 22, 32, 34, 35

AC6700 SERIES LOW-VIBRATION 'GREASELESS' ORBITAL AND GEAR SANDERS

AIRCAT® AC6700 Series features lubrication-free, low-noise, and low-vibration sanders. With 15 models and various options, they ensure precision, comfort, and efficiency. Advanced technology reduces weight and enhances tool lifespan.

- PATENTED DOUBLE SEALED MOTOR PREVENTS DUST CONTAMINATION
- SMOOTH THROTTLE LEVER AND ERGONOMIC GRIP FOR COMFORT
- PATENTED "ANTI VIBRATION" MOTOR DESIGN REDUCES VIBRATION LEVEL TO 4.5M/SEC2



MODEL NO.	DESCRIPTION	Pad Size (in)	Orbit (mm)	Pad Type	No. Vacuum Pad Holes	Free Speed (RPM)
6700-1-332	NON VAC PALM SANDER	1	2.5	Hook & Loop	0	11.000
6700-3-332	NON VAC ORBITAL PALM SANDER/POLISHER	3	2.5	Hook & Loop	0	11.000
6700-3-332CV	CENTRAL VAC ORBITAL PALM SANDER/POLISHER	3	2.5	Hook & Loop	6	11.000
6700-5-336	NON VAC ORBITAL PALM SANDER	5	5	Hook & Loop	0	11.000
6700-5-336CV	CENTRAL VAC ORBITAL PALM SANDER	5	5	Hook & Loop	6	11.000
6700-6-332	NON VAC ORBITAL PALM SANDER	6	2.5	Hook & Loop	0	11.000
6700-6-332CV	CENTRAL VAC ORBITAL PALM SANDER	6	2.5	Hook & Loop	6	11.000
6700-6-332SV	SELF VAC ORBITAL PALM SANDER	6	2.5	Hook & Loop	6	11.000
6700-6-336	NON VAC ORBITAL PALM SANDER	6	5	Hook & Loop	0	11.000
6700-6-336CV	CENTRAL VAC ORBITAL PALM SANDER	6	5	Hook & Loop	6	11.000
6700-6-336SV	SELF VAC ORBITAL PALM SANDER	6	5	Hook & Loop	6	11.000
6700-JBS-332	JITTERBUG SANDER	196.85 x 69.85 mm	2.5	Hook & Loop	6	10.000
6700-6-338	AIRCAT NON VAC ORBITAL PALM SANDER	6	8	Hook & Loop	8	11.000
6700-6-338CV	AIRCAT CENTRAL VAC ORBITAL PALM SANDER	6	8	Hook & Loop	8	11.000

MODEL NO.	Weight (kg)	Length w/Pad Fitted (mm)	Width w/Pad Fitted (mm)	Height w/Pad Fitted (mm)	Noise Level d(B)A	Vibration m/sec2	Average Air Cons. (CFM)	Air Inlet BSP (in.)
6700-1-332	0.77	170.18	76.20	109.22	75	0.8	1.6	1/4
6700-3-332	0.81	139.70	76.20	109.22	75	0.8	1.6	1/4
6700-3-332CV	0.81	182.88	76.20	109.22	75	1.8	1.6	1/4
6700-5-336	0.90	170.18	127.00	109.22	75	1.8	1.6	1/4
6700-5-336CV	0.90	213.36	127.00	109.22	75	1.8	1.6	1/4
6700-6-332	0.90	172.72	152.40	109.22	75	1.8	1.6	1/4
6700-6-332CV	0.90	213.36	152.40	109.22	75	1.8	1.6	1/4
6700-6-332SV	0.90	205.74	152.40	109.22	75	1.8	1.6	1/4
6700-6-336	0.90	172.72	152.40	109.22	75	1.8	1.6	1/4
6700-6-336CV	0.90	213.36	152.40	109.22	75	1.8	1.6	1/4
6700-6-336SV	0.90	205.74	152.40	109.22	75	1.8	1.6	1/4
6700-JBS-332	1.13	195.00	70.00	105.41	80	1.8	9.0	1/4
6700-6-338	1.58	304.80	203.20	114.30	75	4.9	1.6	1/4
6700-6-338CV	1.58	304.80	203.20	114.30	75	4.9	1.6	1/4

SANDERS AND POLISHERS



6310

6" | DUAL ACTION SANDER

SPEED (RPM)	PAD/BELT SIZE (IN.)	SPINDLE THREAD (IN.)	GEARS	EXHAUST	ORBIT OFF-SET (MM)	WEIGHT (KG)	LENGTH (MM)	LEVEL VIBRATION (SEC2)	AIR CONS. (CFM)	REC. HOSE SIZE (IN.)
10.000	6	5/16-24	DIRECT DRIVE	REAR	4.76	1.0	266	1.8	2.5	3/8"

- DUST ISOLATED, LUBRIFICATION-FREE, SPEED REGULATOR, DOUBLE SEALING
- RUBBERIZED COMFORT PALM GRIP



TUNE-UP KIT CONTAINS SPARES NO.:
4, 6, 8, 20, 23, 27, 29, 33, 34, 37, 39



6315-K

6315 & 6315-K

3" | MINI ORBITAL SANDER

SPEED (RPM)	PAD SIZE (IN.)	WEIGHT (KG)	LENGTH (MM)	LEVEL VIBRATION (SEC2)	AIR CONS. (CFM)	REC. HOSE SIZE (IN.)	AIR INLET (IN.) BSP
16.000	2" & 3"	0.71	132	3.3	2	3/8"	1/4"

- **KIT INCLUDES:** A BLOW MOULD STORAGE TRAY, SANDER WITH GUN HANDLE, 2' AND 3' SANDING PADS, AS WELL AS A VARIETY OF 2' AND 3' SANDPAPER.
- SPEED CONTROL TRIGGER



TUNE-UP KIT CONTAINS SPARES NO.:
10-1, 11, 15, 18, 19, 20, 21, 27



6320-K

6320 & 6320-K

3" | MINI ORBITAL SANDER

SPEED (RPM)	PAD SIZE (IN.)	WEIGHT (KG)	LENGTH (MM)	LEVEL VIBRATION (SEC2)	AIR CONS. (CFM)	REC. HOSE SIZE (IN.)	AIR INLET (IN.) BSP
-------------	----------------	-------------	-------------	------------------------	-----------------	----------------------	---------------------

- **KIT INCLUDES:** HOOK AND LOOP 1.25 ROUND AND 2 ROUND, TRIANGULAR PAD SANDING DISCS 120/180/320/600/1000/1500 GRIT SIZES.



TUNE-UP KIT CONTAINS SPARES NO.:
2, 3, 8, 11, 16, 19, 20, 24, 31, 38, 40



6370

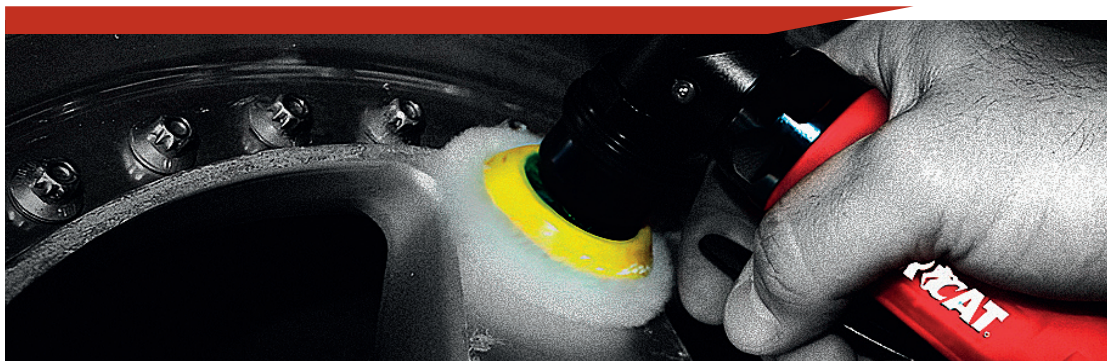
LOW WEIGHT COMPOSITE VERTICAL POLISHER

SPEED (RPM)	MOTOR (HP)	PAD SIZE (IN.)	EXHAUST	WEIGHT (KG)	LENGTH (MM)	LEVEL VIBRATION (SEC2)	AIR CONS. (CFM)	REC. HOSE SIZE (IN.)	AIR INLET (IN.) BSP
3.500	0.6	7"	SIDE HANDLE	1.17	170.	1.8	12	3/8"	1/4"

- STALL RESISTANT 0.6 HP MOTOR



TUNE-UP KIT CONTAINS SPARES NO.:
12, 15, 16, 17, 20, 21, 27, 28, 35, 37



ACCESSORIES

3" PADS

PART NO	DESCRIPTION
BTOB-38-3V0Y-W30	Velcro Backing Pad 3" no holes
BTOB-38-3V6Y-W30	Velcro Pad 3" with holes



5" PADS

PART NO	DESCRIPTION
BTOB-38-5V0Y	5" Velcro Pad no holes
BTOB-38-5V5Y	5" Velcro Pad with holes

6" PADS

PART NO	DESCRIPTION
BTOB-38-6V0Y	Velcro Pad 6" no holes
BT2HG4-49-6V15Y	6" Velcro Pad with 15 holes
UT-OB-38.2-1	Pad 6" (Six Holes) Velcro
UT-OB-38-1	Pad Velcro 6" no holes
HBL6636K	6" Velcro Pad no holes
H0103	6" Vac Velcro Hook Pad (6 holes)



8" PADS

PART NO	DESCRIPTION
BT2HG4-49-8V0Y	8" Backing Pad no holes
BT2HG4-49-8V9Y	8" Velcro Pad C/W 8 Holes

PAD HOOK-UP

9OB81732	RECTANGULAR PAD FOR AIRCAT JITTERBUG SANDER
----------	---

MARVEL OIL

WE RECOMMEND
MARVEL AIR TOOL OIL
FOR OVER 30 YEARS.

- Provides positive lubrication for smooth starting
- Dissolves the deposits that cut down tool speed and reduce power output
- Prevents rust formation
- Assures maximum performance
- Lengthens the life of your tools

Part Numbers

H0076 Small bottle 4 US fl. oz. (118ml)

H0077 Large bottle 32 US fl. oz. (946ml)

Silicone free

ISO Grade 10

Freezing point: -51 °C

Flashpoint: +51 °C

Marvel's unique formulation has a heavy-duty corrosion inhibitor to protect your AIRCAT Tool from moisture in the air line. It includes a solvent that breaks down deposits and gum, allowing them to be safely blown out of the exhaust, leaving a lasting coating of oil for lubrication and your air tool in peak condition. This oil is silicone free and protects o-rings, seals and other plastic parts.



WHEN YOU HAVE REAL WORK TO DO...
GRAB AN **AIRCAT**.

AIR HOSES AND REELS



RETRACTABLE PVC
AH1015PVCREEL

Ideal for automotive workshops

10mm (3/8") ID x 15m long
1/4" BSP M threaded fittings;
Automatic or free running;
Highly durable composite case;
Steel mounting bracket;



RETRACTABLE RUBBER
AH1315RREEL

Ideal for commercial vehicle workshops and industrial applications

13mm (1/2") ID x 15m long
1/2" BSP M & F threaded fittings;
Highest quality rubber hose;
Automatic or free running;
Reinforced steel housing;



RETRACTABLE RUBBER
AH1015RREEL

Ideal for commercial vehicle workshops and industrial applications

10mm (1/2") ID x 15m long
1/4" BSP M & F threaded fittings;
Highest quality rubber hose;
Automatic or free running;
Reinforced steel housing;



RUBBER WHIP HOSE

Recommended to isolate the vibration at the air tool from the quick coupling and prevent accidents

All supplied with male & female threaded fittings
AH08RWHIP - 8mm ID x 0.5m with 1/4" BSP
AH10RWHIP - 10mm ID x 0.5m with 1/4" BSP
AH13RWHIP - 13mm ID x 0.5m with 1/2" BSP

RUBBER ALLOY, RUBBER & HIGH VIZ RUBBER HOSE

Working Pressure 290 PSI (20 Bar)
Burst Pressure 870 PSI (60 Bar)
Temperature Range -20°C to +70°C
100% Silicone Free
Oil & Abrasion Resistant



Rubber Alloy	Rubber	High Viz	Hose ID	Length	Fitting A	Fitting B	
AH0805RA			8mm	5m	1/4" BSP Male	1/4" BSP Male	
AH0810RA			8mm	10m	1/4" BSP Male	1/4" BSP Male	
AH0815RA			8mm	15m	1/4" BSP Male	1/4" BSP Male	
AH0820RA			8mm	20m	1/4" BSP Male	1/4" BSP Male	
AH1005RA	AH1005R		10mm	5m	1/4" BSP Male	1/4" BSP Male	
AH1010RA	AH1010R		10mm	10m	1/4" BSP Male	1/4" BSP Male	
AH1015RA			10mm	15m	1/4" BSP Male	1/4" BSP Male	
AH1020RA	AH1020R		10mm	20m	1/4" BSP Male	1/4" BSP Male	
			13mm	5m	1/2" BSP Male	1/2" BSP Female	
		AH1310HV	13mm	10m	1/2" BSP Male	1/2" BSP Female	
AH1315RA	AH1315R		13mm	15m	1/2" BSP Male	1/2" BSP Female	
	AH1320R		13mm	20m	1/2" BSP Male	1/2" BSP Female	

AIR LINE ACCESSORIES

1/4" BSP STANDARD SERIES



ADAPTOR
Male SA38N
Female SA38FN



QUICK COUPLING
Male CU38-MN
Female CU38N

1/4" BSP SUPER FLOW



ADAPTOR
Male SA38N
Female SA38FN



QUICK COUPLING
Male CU38-MN
Female CU38N

3/8" BSP 1/2" BSP 100 SERIES



ADAPTOR
Male 3/8" BSP SA12
1/2" BSP SA1212



QUICK COUPLING
Female CU100F
CU1212

INTEGRAL TAILPIECES

IT38N 10mm ID to Standard Adaptor
IT12 13mm ID to 100 Series



TAILPIECES

TP14 6mm ID to 1/4" BSP
TP38N 10mm ID to 1/4" BSP
TP12 13mm ID to 3/8" BSP
TP1212 13mm ID to 1/2" BSP



H01415

1/4" BSP Swivel Coupling with Gauge



TECHNICAL INFORMATION

Use of Accessories with Air Tools

When selecting the correct accessory to use with your air tool(s) the following points must be carefully checked:

- The accessory is rated to run at or above the maximum rated speed of the air tool that you plan to use it on.
- Air tool Manufacturers specify these speeds in their catalogs and operator instructions.
- Accessories used on abrasive tools, impact wrenches, nut runners, ratchets, air hammers and scaling hammers must be rated for use with the relevant air tool.
- Any accessory used should be of the correct size and design for the air tool(s) that you plan to use it with.
- Worn accessories should not be used and accessories should not be modified in any way.
- Mounting and fitting instruction for any accessory to be used on an air tool must be carefully followed at all times.
- Use of worn or incorrect accessories may reduce tool performance, create excessive tool wear and can be hazardous
- Always disconnect the tool from the air supply when changing of fitting accessories, guards or other fittings.

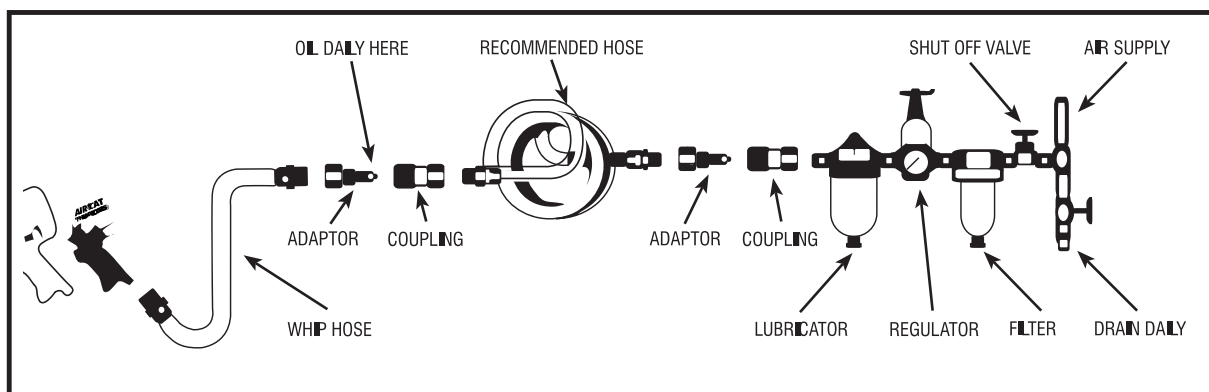
Operator Training for Air Tool; Air Tool Accessory and Compressed Air Use

- All operators should be trained in the correct installation and use of the air tool(s) that they are required to operate.
- All operators should be trained to understand the safety instructions provided by the air tool manufacturer, for each
- Air tool that they are required to operate.
- All operators should be trained in the safe use of compressed air and the use of associated air hoses, connectors and air tool accessories.
- All operators should be trained to operate an air tool and accessories safely and correctly on the application that you plan to use them for.
- Operators or service personnel should be trained to ensure that the air installation, lubricators, filters, regulators, hoses and air nipples and connectors are checked regularly to ensure that they meet the requirements set on a continuous basis.

AIR SUPPLY

Tools of this class operate on a wide range of air pressure. It is recommended that air pressure of these tools measures 90 PSI at the tool while running free. Higher pressure and unclean air will shorten the tool's life because of faster wear and may create a hazardous condition and void the warranty. Water in the air line will cause damage to the tool. Drain the air tank daily. Clean the air inlet filter screen on at least a weekly schedule.

The recommended hookup procedure can be viewed in the illustration below. The air inlet used for connecting air supply has standard 1/4" NPT for smaller tools and 3/8" NPT for larger tools as specified in the tool manual. Line pressure should be increased to compensate for unusually long air hoses (over 25 feet). Minimum hose diameter should be 3/8" I.D. for smaller tools and 1/2" for larger tools as specified in the tool manual.



WARRANTY GUIDELINES

All Universal Air Tool & AIRCAT products are thoroughly inspected and performance-tested before shipping. If a defect in materials or workmanship is found under normal use, Universal Air Tool will warranty the product.

- **Exclusions:** Wearable parts like bearings, hammers, regulators, valves, stems, shrouds, seals, and similar items are not covered.
- **Return Process:** All claimed tools (under warranty or not) must be returned to a certified Universal Air Tool repair agent, along with proof of purchase and the original invoice.
- **Shipping Costs:** Authorized shipping costs will be reimbursed up to £10.00 upon validation by the repair agent.
- **Damage Due to Misuse:** Tools showing signs of misuse, abuse, or overuse are not covered.
- **Operating Pressure:** Tools used above the specified 6.2 bar / 90 psi pressure void warranty.
- **Unauthorized Repairs or Modifications:** Tools that have been ground, welded, adjusted, or altered in any way are not eligible for warranty.
- **Rotating Parts:** These are not covered due to usage-related wear.
- **Wrong Applications:** Products used with incorrect applications or tools are not covered.
- **Inspection Fees:** If a defect is not identified after inspection, return costs will be charged to the distributor.

Universal Air Tool's liability is limited to repair, replacement, or credit at its discretion. Refunds cover only the purchase price; additional costs or consequential damages are excluded.



AIRCAT®

Email Us
enquiries@ut-tools.com

**AIRCAT
EUROPE**



Zona Industrial da Mota,
Lote 51, Rua nº12
3830-527 Gafanha da
Encarnação - Portugal



+351 911 76 7778

**AIRCAT
UNITED
KINGDOM**



Unit 7 Millfield Business
Park, Banbury Lane,
Pattishall, Towcester,
Northamptonshire, NN12
8FB, United Kingdom



+44 1 494 88 3300

WWW.AIRCAT-TOOLS.COM